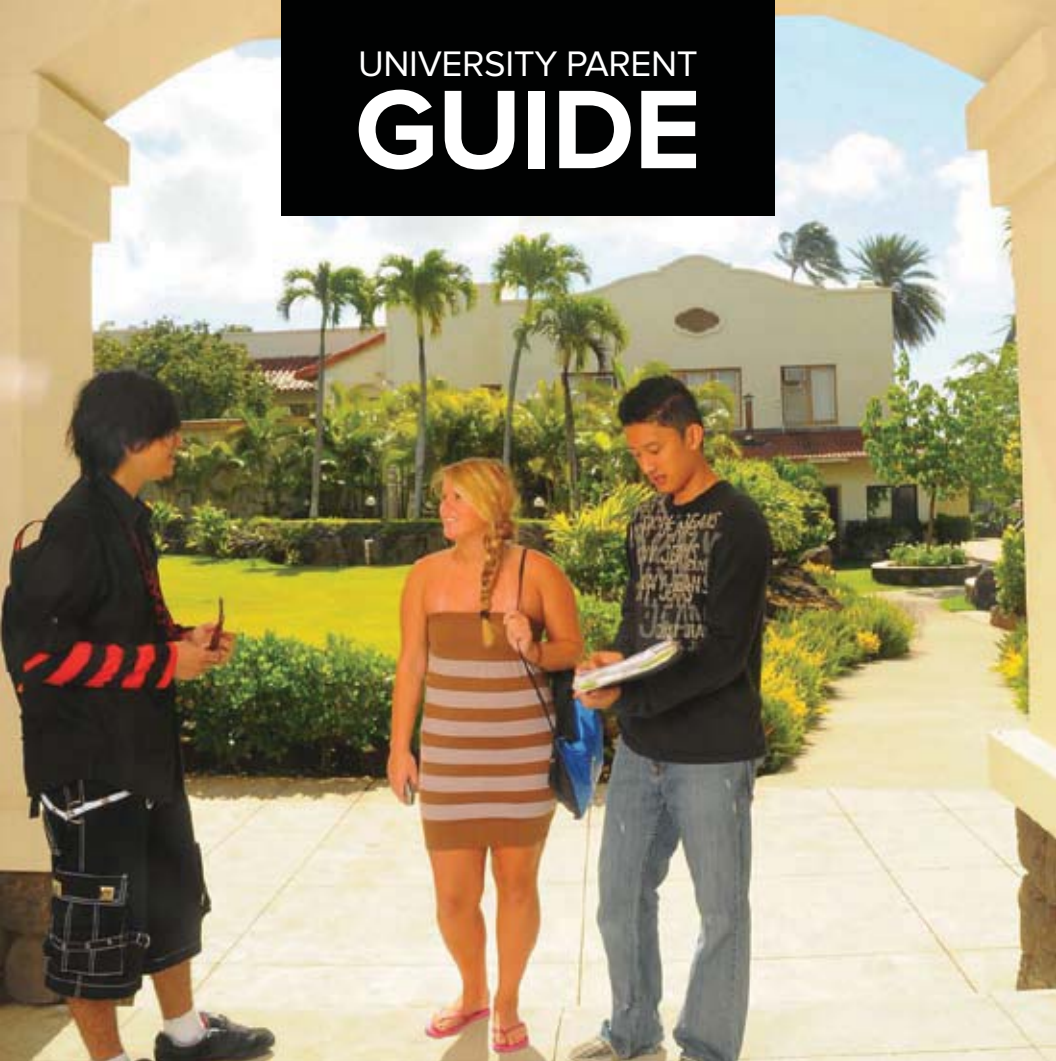


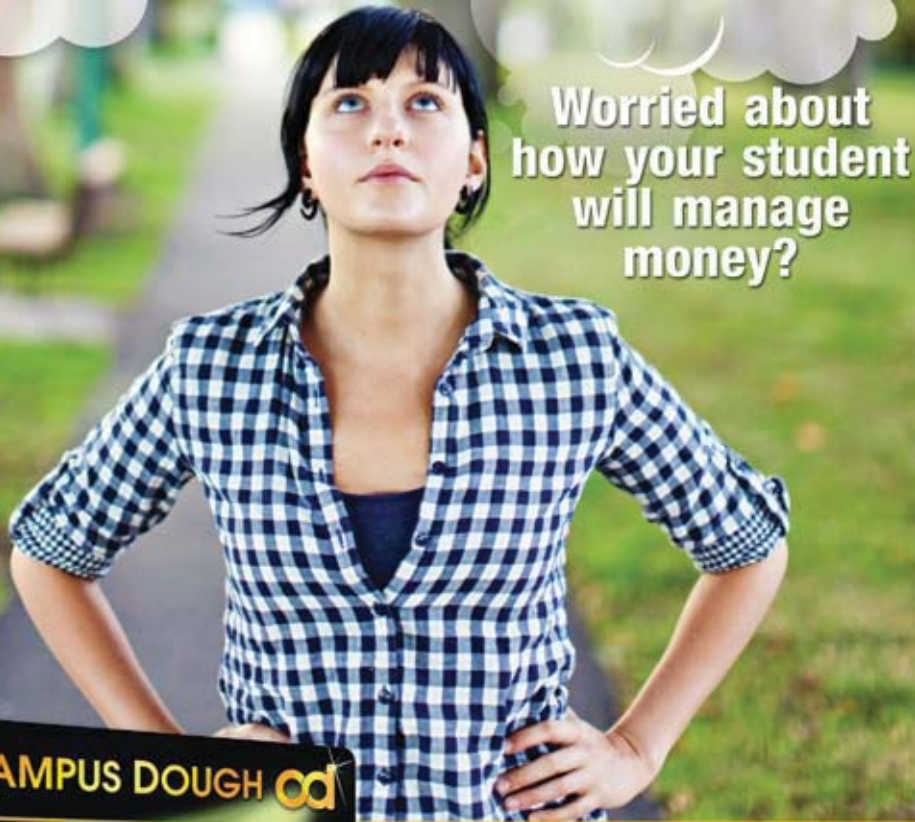
UNIVERSITY PARENT GUIDE



2010

Chaminade University of Honolulu

CAMPUS RESOURCES – LOCAL INSIGHT – HELPFUL INFORMATION



Worried about
how your student
will manage
money?



Check out the
CAMPUS DOUGH CARD!

The Best Way for Students to
Manage & Save Money.

www.campusdough.com



The Campus Dough DebitSmart Visa® Prepaid Card is issued by MetaBank™ pursuant to a license from Visa U.S.A. Inc. The USA PATRIOT Act is a Federal law that requires all financial institutions to obtain, verify, and record information that identifies each person who opens an account. You will be asked to provide your name, address, date of birth, and other information that will allow us to identify you. You may also be asked to provide documentation as proof of identification. *100% approval guaranteed* and *Everyone Qualifies* is contingent upon successfully passing the mandatory identification confirmation.



Chaminade University OF HONOLULU

TABLE OF CONTENTS

4 | Chaminade Guide Comprehensive advice, information for campus success

- 4 | Welcome to Chaminade University!
- 5 | Academics
- 6 | Health, Wellness and Safety
- 7 | Housing and Dining
- 8 | Campus Map
- 10 | Campus Resources, Organizations and Activities
- 12 | Bursar Office / Financial Aid
- 13 | Admissions Process

14 | Resources Must-have knowledge to navigate your way

- 14 | Important Dates

Contact

Chaminade University of Honolulu
3140 Waiālae Avenue
Honolulu, HI 96816-1578
Telephone: (808) 739-8340
Fax: (808) 739-4647
Toll-free: (800) 735-3733
E-mail: admissions@chaminade.edu
Web: www.chaminade.edu

The presence of Chaminade University of Honolulu logos and marks in this Guide does not mean Chaminade University of Honolulu endorses the products or services offered by advertisers in this Guide. ©2010 University Parent Magazines, Inc. To be featured in the guide, please contact University Parent Media Sales at (866) 721-1357, or send an e-mail to ask@universityparent.com.

Featured Sponsors

FINANCIAL SERVICE | **HOUSING**
Campus Dough | **Hawaii Student Housing**
Please see ad on left. | Please see ad below.

HAWAII STUDENT HOUSING
Kama'āina Scholarships available!
THE off-campus housing choice for Chaminade students!
The only off-campus housing choice with all facilities being over 100% student communities.
• Periodic maid service.
• Free utilities, cable, and internet.
• Free air conditioning.
• 24-hour professional staff.
• Conveniently located to Chaminade.
Many different floor plans and student terms available to our two unique properties.
Which of our facilities will you choose?!
Please call our professionally trained leasing staff today!
(808) 922-4661
leasing@hawaii.todesthousing.org | www.hawaii.todesthousing.org



Welcome to Chaminade University!

At Chaminade University we are dedicated to educating you as a whole person. Through a rich curriculum and student support services, we offer learning experiences in and out of the classroom that provide opportunities to develop personal competencies, spiritual values, and professional skills. We also believe that our graduates will have much to contribute to improving their communities and we encourage leadership development and service learning.

Our location in the Pacific bridges the cultures of West and East. The diversity of nationalities, heritages, religious beliefs, and backgrounds that our students bring to Chaminade make our whole campus a lively classroom for learning about living and working in the 21st century. With our 17-to-1 student-to-teacher ratio, you will enjoy small classes and many opportunities to interact informally with faculty and staff. There are opportunities for internships and career preparation activities. A variety of on-campus student clubs, an NCAA Division II sports program,

and the many cultural and recreational activities in Hawai'i will be available to you.

College is a special time in your life. In welcoming you to Chaminade, I encourage you to take advantage of the many resources here. And let us know how we can help you.

Aloha,

Bro. Bernard Ploeger, SM
President ■

Academics

ACADEMIC ADVISING & RETENTION CENTER

The Academic Advising & Retention Center is responsible for:

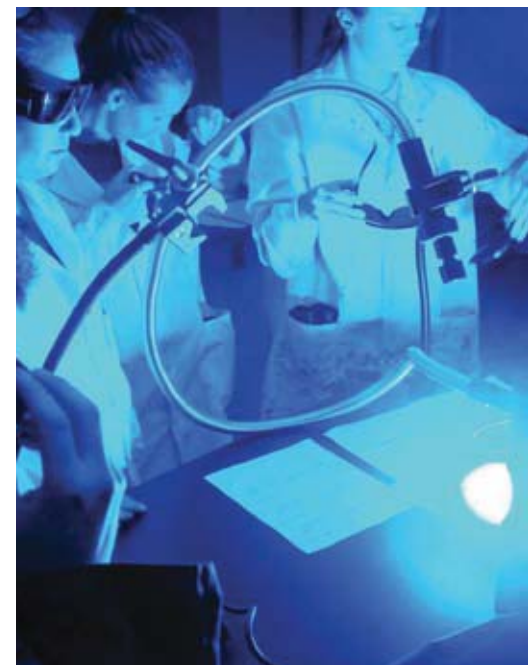
- Assisting students in making a smooth transition from their high school or transfer college.
- Assisting students in registering for classes, and with adding or dropping classes during the add/drop period of each semester.
- Assisting students in withdrawing from classes when appropriate.
- Providing information and assistance to students regarding their academic progress.
- Assistance with declaring a major field of study.
- Counseling students who are struggling academically, and referring them to resources such as tutoring or career counseling that will help them succeed.
- Assisting students with clearance for graduation.
- Assisting students in participating in Study Abroad through our agreements with other universities.

Students will be assigned to faculty advisors for guidance once they have officially declared a major. Ordinarily majors are declared no later than after the first year and one-half of study.

ACADEMIC ACHIEVEMENT PROGRAM

The Academic Achievement Program (AAP) is a federally-funded program designed to assist eligible students in completing their academic goals. We seek to increase retention and graduation rates by offering a variety of services to help students make a successful transition to college, both academically and socially. The program offers services such as Tutoring, Grant Aid, Laptop Loan-Out Program, Workshops and Cultural Events, and one-on-one advising.

The Program provides a learning center to study, and to access books for preparation of graduate school admissions tests such as the GRE, GMAT, LSAT, MCAT and the Praxis exam. The AAP learning center also provides PC computers, along with printers, scanners, and a television with DVD player. The AAP also helps motivate students to consider graduate school and offers workshops and other resources to assist students. ■



Health, Wellness and Safety

RECREATIONAL AND WELLNESS PROGRAMS

The Recreational and Wellness programs, open to all students, faculty, staff and alumni is designed to provide an opportunity for enjoyable, organized recreational activities. Diverse programming is geared to promote healthy lifestyles through physical fitness, social engagement, skill development, and competition. Active participation is encouraged in the hopes that participants will develop an appreciation of the worthy use of leisure time and a wholesome attitude toward physical activity for recreational purposes later in life.

STUDENT HEALTH

In the overall scope of student development, health care is a vital element for physical development and well-being. Because Chaminade University does not have a health center on campus, we offer free alternative means of transportation to and from several local public clinics and area hospitals.



Chaminade supports health requirements that complement the goals of maintaining a healthy, safe campus. Many of these requirements are based upon laws of the State of Hawaii, and therefore are strictly enforced. Failure to comply will result in being prohibited from registering for or attending class or moving into the residence halls. ■



Housing and Dining



RESIDENTIAL LIFE

Developing friendships and experiencing communal living with fellow students in a stimulating community setting is an important source of personal growth during the college years. Chaminade provides residence halls on and off campus as one means of bringing together students from Hawai'i, the Mainland, other Pacific islands, and countries from around the world. These settings offer an opportunity for social, cultural, and intellectual exchange that enhance and expand upon the classroom experience.

RESIDENCE HALLS

On-Campus:

- **Hale Lokelani:** All first year, co-ed, double and triple person furnished suites
- **Hale Pohaku:** First year and upperclass, co-ed, five person furnished suites
- **Kieffer Hall:** First year and upperclass female, Triple, double and single furnished rooms (respectively)

Off-Campus:

- **Waialae Ave:** Upperclass, co-ed, two and three person furnished apartments
- **Date Street:** Upperclass, co-ed, six person furnished apartments
- **Iolani Terrace:** Upperclass, co-ed, four person furnished apartments

Through hall activities, and residence hall governance, the residence life experience is far more than simply a place to live - it is a valuable aspect of the overall educational process.

For students who desire non-Chaminade off-campus rentals, Residential Life maintains a listing of accommodations available to students. These listings are updated frequently and are usually for rooms and apartments located in areas close to the main campus.

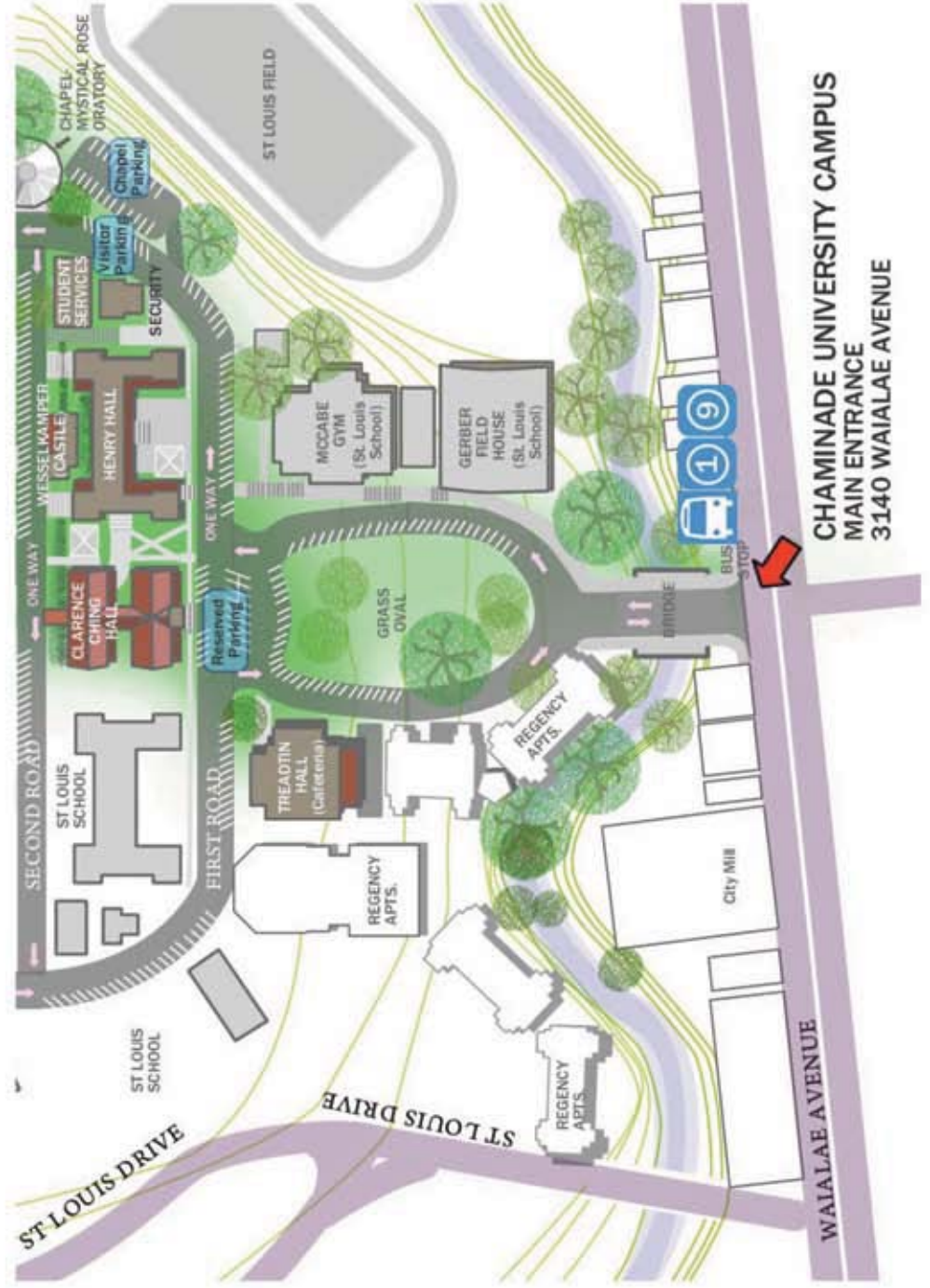
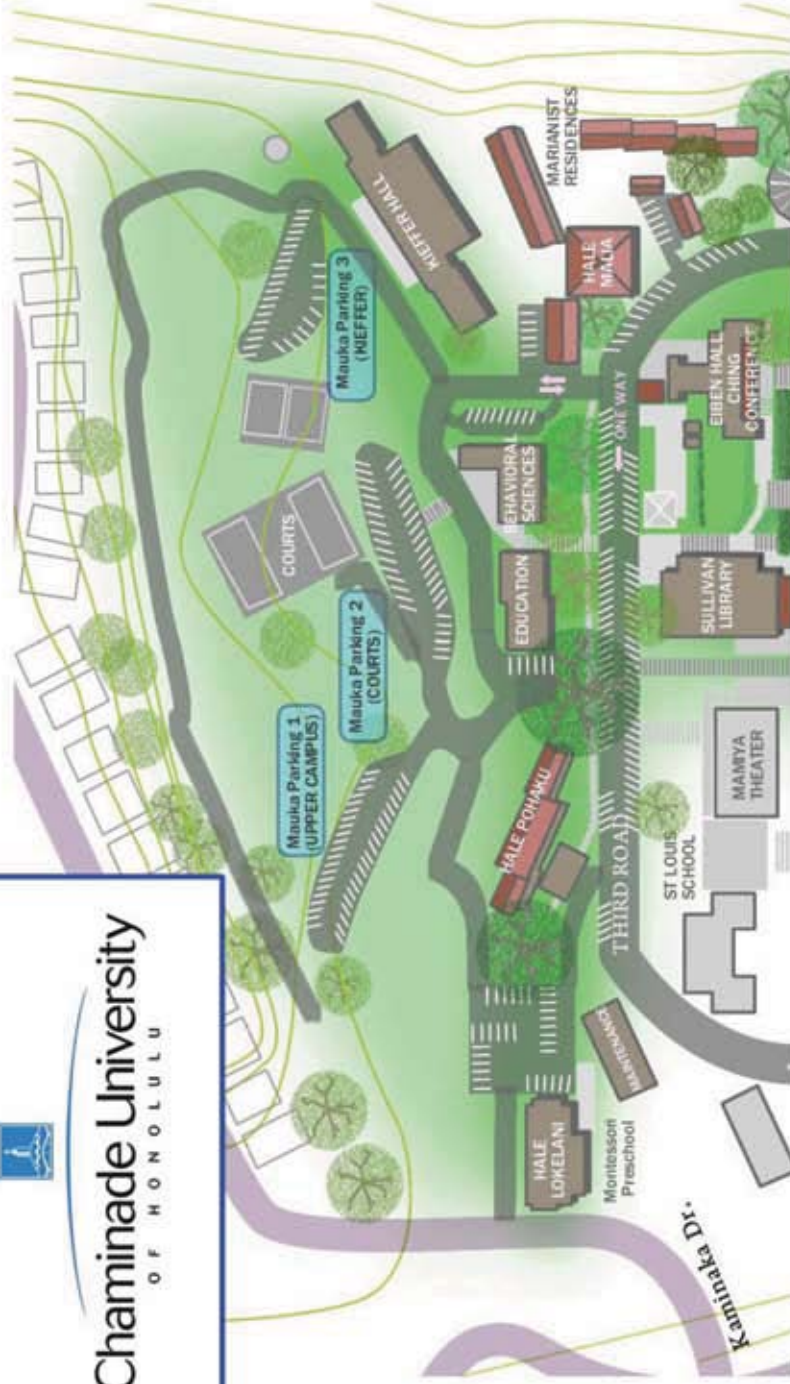
DINING SERVICES

There are three locations on the Chaminade University campus to enjoy a meal or a snack.

- **The Brothers' Brew** is located in the Vi & Paul Loo Student Center. It offers a variety of specialty coffee, tea and fruit drinks, as well as pastries, sandwiches and soups.
- **The Courtyard at Henry Hall** provides hot breakfast entrees, wraps and hot entrees for lunch and a hot entree for dinner and is a place for a quick snack or a grab and go meal. The Courtyard, located at the center of campus activities, also has a self-serve smoothie machine and an entire wall of bottled and canned drinks.
- **The Silversword Cafe**, located in Tredtin Hall, has a program designed more for the traditional residential dining program and is open for service seven days a week for lunch, brunch on weekends, and dinner.

The resident dining program features self-serve fresh salad and sandwich bar, as well as a hot entree line and made-to-order grill. In addition, there is a "Live Action" station in the main dining room. A variety of meal plans are available to our residents and an off-campus plan is also available to apartment and commuter students. ■

Campus Map



Campus Resources, Organizations and Activities



CARLSON FITNESS CENTER

The Carlson Fitness Center features an array of universal machines as well as over 2,500 pounds of free weights for the more serious fitness buffs. Dual Stairmasters and bike machines round out the spacious 4,500 square foot facility. The Center is also used as a training and locker area for student athletes. All students, faculty, staff, as well as Chaminade alumni are welcome to use the facility during scheduled hours. Proper ID, attire and a towel are required. The Carlson Fitness Center is located in Kieffer Hall.

INTERCOLLEGIATE ATHLETICS

Chaminade University competes at the NCAA Division II level. The institution is a member of the Pacific West Conference, a nine team league representing institutions from Hawai'i, Arizona, Utah

and California. Intercollegiate sports include men's: basketball, cross-country, golf and soccer and women's: volleyball, basketball, cross-country, soccer, softball and tennis. Chaminade hosts the popular EA SPORTS Maui Invitational Basketball Tournament each November on Maui, at which perennial collegiate basketball powerhouses compete for an early season title in what is known as "the best basketball tournament in the county outside of March Madness".

Athletic scholarships are available. Chaminade's intercollegiate athletic programs strive to enhance the spirit, attitude and work ethic of all participants

LIBRARY

Sullivan Family Library provides support to curricular programs and extracurricular interests of students. The library houses

70,000 print volumes and has network access to over 34,000 volumes of digital full-text monographs through ebrary, PsychBooks, and ForensicNETbase. Digital format books are available on- or off-campus with proper authentication as a Chaminade student, faculty, or staff member. It subscribes to 239 print journals and about 19,000 full-text online journals. The library licenses over fifty databases including Business Source Premier, Criminal Justice Periodicals, ERIC, LexisNexis Academic, Literature Resource Center and PsycINFO. Electronic resources are available in the library, over the Internet, or via the campus and residence halls wireless LAN.

Special collections include the Oceania Collection, the Julius J. Nodel Judaica Collection, and the Hawaiian/Pacific Collection. The library provides small group study rooms, as well as photocopying and interlibrary loan services.

COMPUTER CENTER

A Computer Center is available for students to complete assignments requiring computer use. Located on the central floor of The Sullivan Family Library, the Center provides students and faculty with a variety of microcomputers, software programs, and reference materials for instruction, word processing, and programming, as well as Internet access.

CAREER PLANNING AND PLACEMENT

Career Services provides students with information on the career planning/development process and the job market. Services include individual career counseling and guidance (some computerized testing), resume and job application assistance and interview strategies, as well as on campus job placement.

Career fairs are held each semester. Seminars and workshops presented by staff, recruiters and employers cover career related topics such as job preparation, resume writing, careers in a variety of fields, customer service, and networking.

Students seeking part-time and full-time job opportunities, on and off campus while attending the University are offered job listings, web sites on the internet, direct employer referrals, work study and on campus recruiting. Current materials relevant to careers, employers, and continuing education are maintained in the Career Resource Library. Online career inventories and a variety of other online resources are available on www.chaminade.edu/careers. All services are provided without charge to students and alumni. ■

Bursar Office/ Financial Aid

The Financial Aid Office handles all federal, state, and institutional aid. Additionally, it maintains the records for more than 40 donor scholarships. Financial assistance to students at Chaminade University (CUH) amounts to well over \$20 million annually.

Chaminade offers Merit Based Scholarships based on cumulative high school or college/university GPA. For a full listing please go to, www.chaminade.edu/financial_aid.

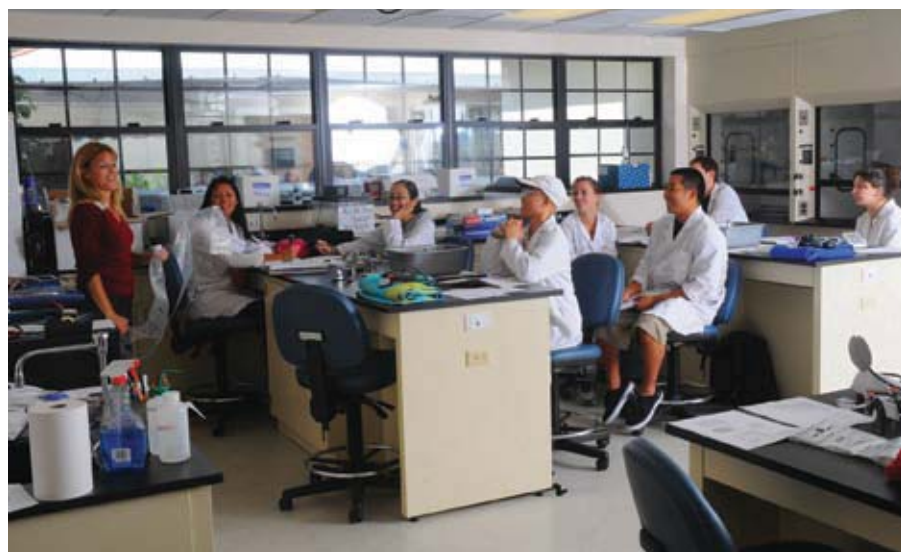
What Is Available

Chaminade University financial aid is provided through a combination of federal, institutional, and private donor-based sources, and comes in three forms: 1) grants and scholarships (i.e. gift aid); 2) workstudy programs which provide students the opportunity to earn their money while being employed in jobs affiliated with the campus; and 3) loans provided at reasonable interest rates and repayment terms. Your award offer will be determined by your enrollment status, your level of financial need, and fund availability.

Who Is Eligible

In general, you can apply for financial aid if you are, or will be, a classified (i.e. degree seeking) student at Chaminade University, a U.S. citizen or eligible non-citizen, maintain satisfactory academic progress, have not defaulted on a prior student loan or owe a refund on a previous educational grant, and have registered with the selective service (generally applies to U.S. males ages 18 to 25). Other qualifications such as financial need, enrollment status, and scholastic ability may be applicable for certain types of aid programs. ■

Note: These basic requirements pertain to all Federal financial aid programs, but will also generally be used to evaluate eligibility for Institutional aid, although CUH reserves the right to make exceptions. Donor-Funded scholarships have specific individual requirements stipulated by each donor.

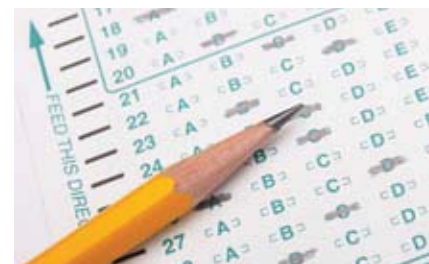


Admissions Process

Chaminade University welcomes applications from all students who have the ability, motivation, and preparation to benefit from the various programs offered. All applicants should have earned a high school diploma or the equivalent.

Adequate preparation typically includes:

- English Four years
- Social Studies Three years
- Mathematics Three years
- Science Two years
- College Preparatory Electives Four years



Application for Admission

An application for admission must be completed by each candidate seeking admission to any credit course or program offered. Application forms may be obtained from:

Admissions Office
Chaminade University of Honolulu
3140 Waiālae Avenue
Honolulu, HI 96816-1578

Telephone: (808) 739-8340
Fax: (808) 739-4647
Toll-free: (800) 735-3733
E-mail: admissions@chaminade.edu
Web: www.chaminade.edu

When and How to Apply

While the Admissions Office operates on a “rolling” admission basis, the following dates are recommended to ensure adequate time for receipt and processing of all admissions documents:

- Fall semester May 1
- Spring semester December 1

First Time College Students

Applicants who have or will be completing high school are required to do the following:

- Send the completed paper application form with a \$50 application fee to the Admissions Office.
- On-line applications are encouraged and may be found on our website at www.chaminade.edu.
- Have official high school transcripts submitted to the Admissions Office. High school seniors should request a supplemental transcript upon completion of the senior year and acceptance by the University. Arrange to complete either the College Entrance Examination Board Scholastic Aptitude Test (SAT) or the American College Test (ACT) and have the official results sent to the Admissions Office. Additional documentation may be required at the request of the Admissions Office.

Transfer Students

Students from 2 or 4-year colleges may transfer at any time. No minimum number of units is required for transfer. Applicants who have completed high school and are attending college or have attended college and earned more than 24 semester hours of college credit are required to submit the following credentials:

- A completed paper application form accompanied by a \$50 application fee. The on-line application is available on the university's website at www.chaminade.edu. A \$25 application fee is required for the online version.
- Complete official transcripts of all applicants' university or college attended record and a list of courses in progress. Upon completion of work in progress, a supplementary transcript must be sent to the Admissions Office.
- If less than 24 semester hours of college credits have been earned, high school transcripts and official SAT/ACT scores are required. ■

Important Dates

NOVEMBER 2010	
1	Monday Open Pre-registration for Spring Day 2011 semester
5	Friday Deadline to withdraw from classes and last day to apply for credit/no credit option
11	Thursday Veterans' Day (no classes; offices closed)
17	Wednesday Interfaith Thanksgiving Services at noon (offices closed from noon-1:00pm)
25-26	Thursday-Friday Thanksgiving Recess (no classes; offices closed)
DECEMBER 2010	
3	Friday Last day of Instruction
6-9	Monday-Thursday Final Examinations
10	Friday Last day to submit Clearance for December 2011 graduation
10	Friday Residence halls close at noon except for graduating seniors and residents staying during the Winter break
12	Sunday Baccalaureate Service and Awards Ceremony to follow
13	Monday Fall Commencement
14	Tuesday Residence halls close at noon for graduating seniors
24	Friday Christmas holiday observed (offices closed)
31	Friday New Year's holiday observed (offices closed)

2011	
JANUARY 2011	
6	Thursday New Students move into residence halls
7-9	Friday- Sunday New Student Orientation
7	Friday Last day of regular registration
8	Saturday Returning students move into residence halls
10	Monday Day Undergraduate Classes begins
10	Monday (tentative) Winter Evening/Masters begins
10-18	Monday-Tuesday Add-drop period
17	Monday Martin Luther King Day (no classes; offices closed)
18	Tuesday Add-drop period ends
19	Wednesday (tentative) Marianist Founders' Day Mass 11:00 am (11:00 classes cancelled and offices closed from 11:00-1:00 pm)
FEBRUARY 2011	
11	Friday (tentative) Cohort Faculty Appreciation Gathering
15	Tuesday Deadline to submit Petition for May 2011 Graduation
19	Saturday Seniors Pre-registration for Fall Day 2011 semester
21	Monday Presidents' Day (no classes; offices closed)
24	Thursday Juniors Pre-registration for Fall Day 2011 semester

2011 Spring Day Semester – January 10 2011 - May 5

FEBRUARY 2011 (CONT'D)	
25	Friday Celebration of Service Learning
28	Monday Open Pre-registration for Fall Day 2011 semester
28	Monday (tentative) Registration for Spring Evening/Graduate
MARCH 2011	
9	Wednesday Ash Wednesday Lenten Service at 12 noon (offices closed from noon-1:00 pm)
21-25	Monday-Friday Spring Recess (no classes)
23	Wednesday (tentative) Winter Evening/Masters ends
25	Friday Prince Kuhio Day holiday observed (no classes; offices closed)
APRIL 2011	
1	Friday Deadline to withdraw from classes; last day to apply for credit/no credit option
4	Monday (tentative) Spring Evening/Masters begins
15	Friday Na Liko Na'auao – Celebration of Student Scholarship
21	Thursday Holy Thursday (no evening/graduate classes on campus after 5:00 pm)
22	Friday Good Friday (no day undergraduate classes; no evening/graduate classes on campus until after 5:00 pm; offices closed)
29	Friday Last day of instruction

MAY 2011	
2-5	Monday-Thursday Final Examinations
6	Friday Residence halls close at noon for everyone except graduating seniors and students remaining for the summer session
8	Sunday Baccalaureate Service and Awards Ceremony
9	Monday Spring Commencement
10	Tuesday Residence halls close at noon for graduating seniors





Chaminade University

O F H O N O L U L U