

UNIVERSITY PARENT
GUIDE



2010 | Kettering University

CAMPUS RESOURCES – LOCAL INSIGHT – HELPFUL INFORMATION



Dort Federal's Student Loan Program

The smart way to finance your college education!

- Competitive Interest Rates and with good grades, get even lower rates.
- 1% Interest Rate Reduction once you repay 10% of the loan.
- No Cosigner Required for Juniors and Seniors. Creditworthy students can apply on their own.

Call Today! 888.549.9050

Dort Federal Student
Loans Powered by



cuStudentLoans.org

The leading private student lending marketplace

Learn more and apply at
dortonline.org/studentloans/

Dort  Federal
CREDIT UNION

TABLE OF CONTENTS

4 | **Kettering Guide**

Comprehensive advice, information for campus success

- 4 | Welcome!
- 5 | Parents Advisory Council
- 6 | Academics
- 7 | Health & Wellness
- 8 | Housing & Dining
- 9 | Campus Resources, Organizations & Activities
- 11 | Financial Aid
- 12 | Admissions Process

14 | **Resources**

Must-have knowledge to navigate your way

- 14 | Helpful Resources and Campus Map

Contact

Kettering University
1700 University Ave.
Flint, MI 48504
(810) 762-7865
www.kettering.edu

Featured Sponsors

ACCOMMODATIONS

Courtyard by Marriott
Please see ad on p. 15.

Hampton Inn & Suites
Please see ad on p. 8.

Holiday Inn Express Grand Blanc
Please see ad on p. 10.

Holiday Inn Gateway Center
Please see ad on p. 15.

Residence Inn by Marriott
Please see ad on p. 15.

Wingate by Wyndham Grand Blanc
Please see ad on p. 5.

BANKING & FINANCIAL SERVICES

Dort Federal Credit Union
Please see ad on p. 2.

HOUSING

Campus Village Apartments
Please see ad on back cover.

STUDENT SERVICES

The Maksin Group
Please see ad on p. 5.

Mass Transit Authority
Please see ad on p. 13.

The presence of Kettering University logos and marks in this Guide does not mean Kettering University endorses the products or services offered by advertisers in this Guide. ©2010 University Parent Magazines, Inc. To be featured in the guide, please contact University Parent Media Sales at (866) 721-1357, or send an e-mail to ask@universityparent.com.



Welcome!

Where do you want to go? What do you want to be? Kettering University is all about engineering, plus a whole lot more! We seek the future innovator, leader, scientist, doctor and CEO. If you love to learn, Kettering has the professors, the labs, and the experiential learning programs that bring theory and practice together better than any place else.

Kettering is a highly-acclaimed, private university located in Flint, Michigan, that combines innovative, hands-on programs in engineering, math, science, and business with a ground-breaking experiential learning and professional cooperative education program. Students are connected with amazing learning experiences outside the classroom which include our traditional co-op program, undergraduate research projects, entrepreneurship experiences, service learning opportunities and incredible design competitions. What that means: students in all degree programs alternate between study terms and work/learning terms.

Kettering students graduate with up to 2 ½ years of real world experience and envy-worthy resumes. Our students have done everything from testing ballistic systems to re-engineering crowd management to designing biomedical

tools. And since students can secure a learning experience, their first year, they learn early what they like to do – and what they never want to do again.

All of this experience pays off. Research shows that students who participate in experiential learning and co-op programs are more mature, better problem solvers, and more technically knowledgeable. Employers know that Kettering students are the cream of the crop – our students typically graduate with job offers or grad school acceptances in hand, and frequently start their positions at a higher salary than their peers from other schools.

Those who know Kettering students agree – tomorrow's business and industry leaders are at Kettering today. At Kettering, students earn a degree for the real world. Any university will take you places. Kettering will take you farther. ■

Parents Advisory Council

The Parents' Advisory Council provides a forum for communication between parents and the University. Through quarterly meetings, family days, an online chat room, and other means, the Council fosters good will between parents, students, the University, and the local community to help enhance student life.

Parents of all Kettering students are welcome to join the Council, which meets each term. Council members organize family activities for Family Day, Orientation, Homecoming, and other events. To connect with other parents, share ideas, make suggestions, and ask questions, email parents@kettering.edu. Parents are also invited to join the Kettering University Parents' Facebook group. Visit www.kettering.edu/parents for more information, or contact Deborah Stewart, Interim Director of Student Life, at dstewart@kettering.edu or (810) 762-9679. ■

ALL INCLUSIVE PRICING?
A HOTEL THAT THINKS LIKE YOU DO!

\$85*

WINGATE by WYNDHAM® GRAND BLANC is pleased to offer this special rate to Kettering University families. We are conveniently located just 5 miles from campus.

Wingate by Wyndham®
1359 Grand Pointe Court
Grand Blanc, MI 48439
810.694.9900
wingateflint.com

* Plus Taxes

WINGATE BY WYNDHAM

Wingate by Wyndham® hotels are independently owned and operated. ©2015 Wingate Inns International, LLC.

the **MAKSIN** group

1-800-220-1123
www.maksin.com

College Student Medical Plans

The Maksin Group administers Kettering University's Student Medical Plan

Academics

A Kettering education is all about personalization – there’s no one-size-fits-all mentality here. Besides our 13 undergraduate degrees, Kettering offers more than 40 minors, specialties and concentrations in high-demand fields such as aerospace engineering, computer gaming and pre-med. Students can customize their education to best fit their talents and interests, and will learn from PhD level professors in world-class laboratories – such as the Crash Safety Center, Fuel Cell Research Lab, or Life Sciences Labs. And with an average student to faculty ratio of 16:1, students will benefit from all of that one-on-one attention. Add in opportunities to study abroad and our unique focus on entrepreneurship and innovation across the curriculum, students can create an education experience as unique as they are. A full list of our Undergraduate Degree programs is available on our website at www.kettering.edu/futurestudents.

ACADEMIC NEWS

- Kettering offers the ground-breaking “Entrepreneurship across the Curriculum” program, which encourages innovation and the entrepreneurial spirit in every degree program.
- Foreign language classes in Chinese and German are now being offered.
- Kettering is the first private university to enter into an “Early Assurance” program with Michigan State University’s College of Human Medicine.

STUDY ABROAD

- Degree programs eligible: mechanical engineering, electrical engineering, industrial and manufacturing engineering, computer engineering, computer science, chemistry, and business.
- Locations: Reutlingen, Germany; Ulm Germany; Furtwangen, Germany; Esslingen, Germany; Konstanz, Germany.
- Locations in development: Yangzhou, China; Shanghai, China; Suwon, South Korea; Chungju City, South Korea; Istanbul, Turkey.
- Please contact the Study Abroad Office at (810) 762-9869 or international@kettering.edu for more details.

OFFICE OF COOPERATIVE EDUCATION AND CAREER SERVICES

- Offers students assistance in finding co-op positions and learning experiences outside the classroom.
- Offers resume writing critiques.
- Conducts free Professional Development classes to students.
- Kettering Connect – the online resource for open student and full-time positions.
- Offers career advisement to both students and alumni.

ACADEMIC SERVICES

- Academic advising (transitions for all first year students; general advising open to all students as well as assisting students on academic probation).
- The Student Academic Resource Center (tutoring & workshops).
- RED FLAG early alert system.
- Test proctoring. ■



Health & Wellness

ZELPHA MCKINNON WELLNESS CENTER

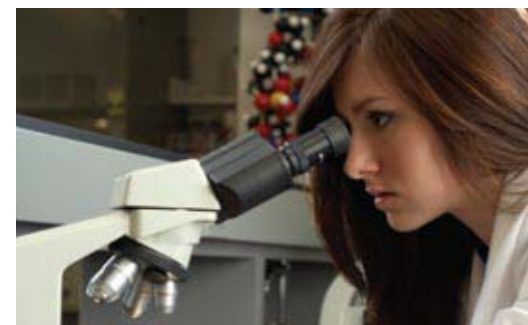
The Zelpha McKinnon Wellness Center promotes successful health behaviors through these services, available to all enrolled students:

- Primary health care.
- Counseling.
- Drug and alcohol prevention programs.
- Disability accommodations.
- Health insurance.
- Health screenings.
- Support groups.
- Guest speakers and workshops.
- Resource library.

Visit www.kettering.edu/wellness for complete information about the Zelpha McKinnon Wellness Center. Or, contact director Deborah Williams-Roberts at drobot@kettering.edu or (810) 762-9650.

HEALTH INSURANCE

Kettering requires all students to submit proof of health insurance through a third party, The Maksin Group, which verifies coverage through their online system. Students must complete the waiver process twice yearly (January and July) or pay the health insurance premium. Maksin’s Accident and Sickness Insurance Plan provides health insurance coverage for college students at a highly competitive cost. Students may also purchase dependent coverage through the group. Students and their parents may contact Maksin through their web site www.Maksin.com/KetteringU.aspx or toll-free at (877) 775-5430. Kettering’s Wellness Center staff will also answer questions about the verification procedure. Contact them at wellness@kettering.edu or (810) 762-9650.



CAMPUS SAFETY

Kettering’s Campus Safety Department protects the entire campus community through round-the-clock services and special programs designed to ensure a secure environment for personal growth and development. We are dedicated to excellence, teamwork, and community interactions defined by integrity and fairness. Working in partnership with our campus community and local police agencies, we share protection responsibilities and facilitate education on personal safety and crime prevention. Services to the campus community include foot and motor patrols, responding to campus emergencies, jump-starting vehicles with dead batteries, enforcing parking regulations, after-hours escort services, and assisting students with access to campus buildings after hours. Through a special contract with the City of Flint, two Flint Police Department officers patrol the campus and surrounding area. In addition, these officers also teach personal safety and carry out safety audits on off-campus student housing, upon request.

For more information about Campus Safety, see www.kettering.edu/physical_plant/campus_safety.jsp or contact Chief Jim Benford at jbenford@kettering.edu or (810) 762-9899. ■

Housing & Dining

KETTERING UNIVERSITY DINING

Kettering offers two dining halls in the Campus Center building. The Sunrise Room provides cafeteria-style service; the Sunset Room features “Grab & Go” meals and snacks. First year students must purchase a Full Board plan. All other students may choose between three different options, described below.

Plan A – Full Board Dining

- Includes 15 meals in Sunrise Room (Breakfast, Lunch, & Dinner) – Monday thru Friday.
- Includes 4 meals in Sunrise Room (Brunch & Dinner) – Saturday & Sunday.
- Plus \$50 bonus bucks to be used in the Sunset Room.

Plan B – 29 Meal Plan

- 29 Lunch/29 Dinner/29 Combo.

Plan C – 58/58 Meal Plan

- 58 Lunch/58 Dinner.

Current costs for these plans may be found at www.kettering.edu/businessOffice/tuition.jsp. All plans are non-refundable. Meals purchased are valid for one year from date of purchase. Meals not used within one year will be forfeited. The University does not provide food service during holiday breaks. Students with special dietary needs should contact Deborah Stewart, Interim Director of Student Life at dstewart@kettering.edu or (810) 762-9679.

FRANCES WILSON THOMPSON HALL

Frances Willson Thompson Hall provides a safe and dynamic living and learning environment for new and returning students. Located in the heart of our campus, Thompson Hall provides a venue for educational and social interactions between students at all levels. Residents enjoy single rooms (connected to a suitemate by a pocket door); study,

computer, and tv lounges located throughout the building; a communal kitchen; and a spacious lobby which features jumbo screen televisions and a large game collection. A recreation room is outfitted with billiards, foosball, and hockey tables. Laundry and storage facilities are available to all residents. Resident Advisors, selected for their leadership skills and required to complete rigorous training, manage groups of 20-30 residents. New students, in particular, benefit from the RA's knowledge and experience as successful collegians. Current rental rates for new and returning students may be found at www.kettering.edu/businessOffice/tuition.jsp

For more information about Frances Willson Thompson Hall, contact Antonio Riggs, Director of Residence Life, at ariggs@kettering.edu or (810) 762-9537.

COMPASS: Campus Orientation Meetings to Prepare for Academic and Social Success

COMPASS, our orientation program, helps new students transition smoothly to college life. The mandatory program takes place during the four days preceding the first day of class in July and October. (New students who start in January or April attend orientation the Friday before classes begin.) Planned and organized by the COMPASS Crew, upper class students specially selected for their leadership skills, COMPASS features programs, guest speakers, social events, and advising sessions designed to introduce new students to programs and services that will facilitate academic, professional, and social success. COMPASS also gives us the opportunity to share our expectations for students, including the value we place upon personal integrity, social responsibility, and active citizenship.

Camp COMPASS

Camp COMPASS is an optional 2-1/2 day off-campus leadership retreat for incoming first year students. Designed to introduce new students to Kettering University and its student leaders, Camp COMPASS features developmental activities such as team building initiatives, ropes courses, wall climbing, and other leadership development activities. This unique experience provides a rare opportunity for new students to connect with student leaders, who model behaviors for academic, professional,

and social success. New students who participate in Camp COMPASS perform better academically, are more likely to engage in campus activities, and most likely to become student leaders themselves.

For more information about COMPASS and Camp COMPASS, see http://www.kettering.edu/studentlife/new_student_orientation.jsp or contact Deborah Stewart, Director of Orientation and Special Programs and Interim Director of Student Life, at dstewart@kettering.edu or (810) 762-9679. ■

Campus Resources, Organizations & Activities

STUDENT LIFE

College presents many opportunities for students to explore new interests, meet new people, make new friends, and figure out who they want to be. So, to make sure they get a life along with an education, we offer a wide variety of activities, clubs, and organizations created to facilitate academic, professional, and personal growth. Campus events include concerts, movie screenings, and dances. More than 50 student clubs, as varied as Anime, ▶



playtime with a bonus.

You've got exciting plans ahead. So go out and explore - knowing you have a nice, comfy room to relax in afterward, with amenities to make your whole trip more enjoyable. Plus, you can earn Hilton HHonors® bonus points and miles with every stay. You'll be 100% satisfied. Guaranteed.



Flint/Grand Blanc, MI • 6060 Rashelle Drive • Flint Michigan
www.flintgrandblancsuits.hamptoninn.com • 810-234-6400

Hilton HHonors membership, earning of Points & Miles®, and redemption of points are subject to HHonors Terms and Conditions.

Hilton HHonors The Hilton Family

©2019 Hilton Hotels Corporation

Scuba Diving, and Trap and Skeet, allow students to pursue personal interests and improve their skills. Professional organizations, like the Institute of Industrial Engineers and the American Marketing Association, introduce students to distinguished alumni and other successful professionals who share their expertise, knowledge, and experience as speakers and advisers. Organizations like Engineers without Borders and GEO: Green Engineering, allow students to combine their intellectual and civic interests.

Kettering also offers students opportunities for leadership, professional growth, and service through campus groups like Kagle Leadership Initiatives, Kettering Student Government, the Entrepreneurial Society, and the Student Civic Engagement Center. Students with creative and artistic leanings may enjoy writing for the school newspaper, The Technician; working at the radio station, WKUF-LP FM; or participating in classes and activities at the nearby Flint Cultural Center. Kettering students may join a band or choir, produce and act in plays, or learn photography and drawing from local experts. Each year, Kettering students publish The Muse, featuring students' art, photography, and writing.

We encourage all students to pursue myriad interests through campus activities and organizations. Our research shows that the more our students have to do, the more they get done, the better they perform academically, and



the higher they rate their satisfaction with Kettering. For more information about student life at Kettering, see www.kettering.edu/studentactivities/index.jsp or contact Deborah Stewart, Interim Director of Student Life, at dstewart@kettering.edu or (810) 762-9679.

GREEK LIFE

Since 1921, Greeks have played an important role in the lives of the students at Kettering University, providing a home away from home and supporting excellence in academics, athletics, and leadership. Today, Kettering's fraternities and sororities continue this proud tradition of helping our students excel in all aspects of college life.

Kettering is currently home to 13 fraternities and five sororities, which all play a vital role on campus and in the Flint area at large through their community service projects and philanthropic activities. Opportunities available to members through Greek Life include:

- Leadership development workshops and opportunities to practice leadership skills.
- Scholarship opportunities and academic support.
- A safe, clean, friendly home atmosphere in chapter houses. (Not all fraternities and sororities have housing facilities.)
- Experienced advisors trained to work with Greeks.
- Opportunities for personal growth and development.
- Professional networks to assist students in launching their careers.

Kettering provides oversight and guidance to the Greek Community through the Greek Life office, directed by Robert Marias. For more information about Greek Life at Kettering, see www.kettering.edu/greeklife or contact Robert Marias at rmarias@kettering.edu, (810) 762-9743.

RECREATION SERVICES AND THE CONNIE AND JIM JOHN RECREATION CENTER

Kettering's Recreation Services and the Connie and Jim John Recreation Center offer quality recreational programs, facilities, and services to the University community that promote healthy lifestyle choices and foster successfully balancing academics and physical well being. Kettering's 70,000 square foot Recreation Center has a full complement of aerobic, strength, and sports amenities, in addition to student and alumni lounges, making it the focus of many recreational and social activities on campus. The Center houses a six-lane swimming pool, four multi-purpose regulation basketball and tennis courts, three racquetball courts, an indoor track, and a batting cage. Other features include an aerobics/dance room, a free-weight room, and a fitness/exercise room that overlooks the pool and gymnasium. Also, Kettering offers students a wide range of organized intramural athletics, in areas as varied as basketball, baseball, indoor soccer, volleyball, and inner tube water polo.

Kettering now boasts to its own hockey team, which plays in the Michigan Collegiate Hockey Conference, an affiliate of the American Collegiate Hockey Association (ACHA). In its first two seasons, the team has distinguished itself athletically and academically. In 2010, the Bulldogs secured a place in the Northern Regionals of the ACHA and had several players chosen for the All-Conference Team. In 2009, the ACHA named five Kettering players Academic All-Americans for their outstanding scholarly achievements.

For more information about Recreation Services and the Connie and Jim John Recreation Center, see www.kettering.edu/recservices or contact director Mike Schaal, mschaal@kettering.edu or (810) 762-9732. ■

Financial Aid

A Kettering education can be affordable! Challenge our financial aid staff to show you how. Your student's Kettering education comes with a big payoff that will impact their life (and finances) years before graduation. Remember, any money you earn through co-op or your experiential learning opportunity is your to keep! In addition, nearly 98% of the 2010 entering class received financial aid or scholarships.

KETTERING UNIVERSITY MERIT SCHOLARSHIPS

- All admitted students are automatically considered.
- Merit Scholarships are awarded to students based on academic performance. Academic performance indicators used to assess merit awards include a combination of ACT and/or SAT scores, plus GPA. All accepted applicants are reviewed by the scholarship review committee.

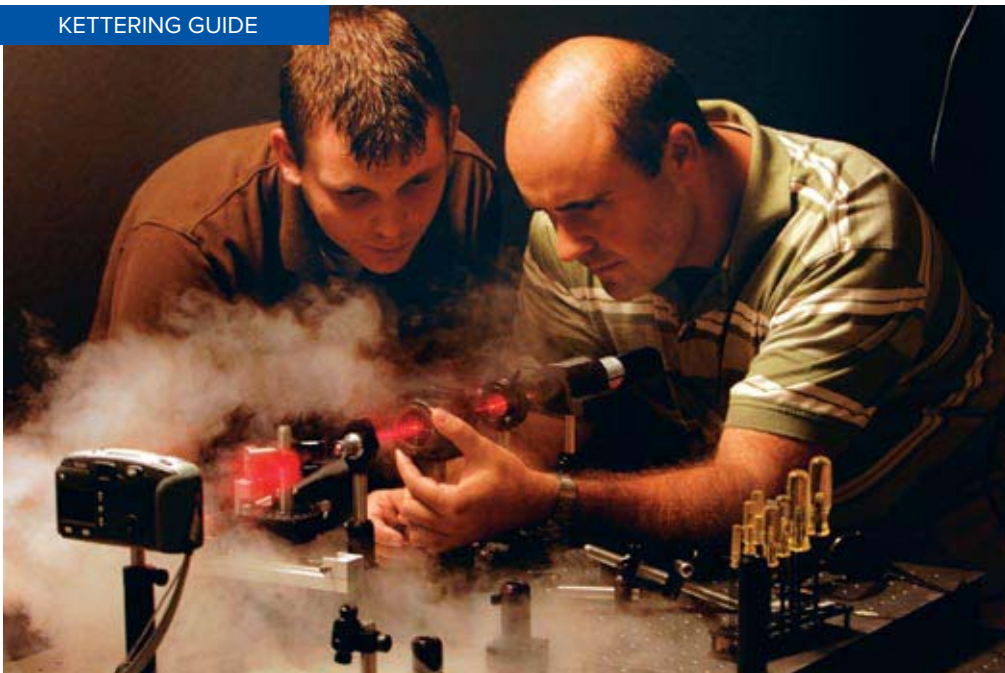
OTHER KETTERING SCHOLARSHIPS

- **FIRST Robotics:** Up to \$5,000/year.
- **National Co-op Scholarship Program:** Up to \$6,000/year.
- **SAE Scholarship:** \$5,000/year
- **DECA Scholarship:** Up to \$2,500/year.
- **The Russell J. Ebeid '62 ACCESS Scholarship for Arab American Students:** Varies.

To be eligible for Kettering University's need-based aid and over \$90 billion in state and federal aid, ALL families are encouraged to file the Free Application For Student Aid (FAFSA) on-line at www.fafsa.ed.gov.

KETTERING RETURN ON INVESTMENT (ROI)

- **Kettering's Co-op Wage and Benefit Survey:** co-op.kettering.edu/docs/BenefSurvey.pdf.
- **Kettering grads starting salaries outpace competition:** www.payscale.com/best-colleges/best-engineering-colleges.pdf.
- **Kettering Graduate Salary Survey:** co-op.kettering.edu/docs/GraduateSalary.pdf. ■



Admissions Process

Admissions to Kettering University is a selective process based on traditional academic criteria. Our admissions process is a personal one. We are interested in learning about each student's interests, talents, and career goals! All applicants should have pursued a rigorous college preparatory curriculum and achieved high scholastic standing, especially in the areas of science, math, and English. For a full list of required coursework, College Entrance Exam scores, and Advanced Placement and International Baccalaureate credits, please visit www.admissions.kettering.edu/ahead.



Primary consideration is given to the applicant's high school academic record and scores on college entrance examinations. Secondary consideration is given to the student's class standing, employment history, extracurricular honors and activities, and other evidence of ability, interest, and motivation.

APPLICATION REQUIREMENTS:

- Completed application.
- Official high school transcripts.
- Official college transcripts (if dual enrolled).
- High School Data Form (to be completed by high school counselor).
- ACT or SAT score.

HOME SCHOOL APPLICANTS

Kettering University welcomes homeschooled students to apply for admission. All applicants have the same requirements and each application is reviewed individually. Kettering will place special emphasis on college entrance exams and may contact the primary educator for additional information.

APPLICATION REQUIREMENTS:

- Comprehensive transcripts from home school associations or primary teacher are accepted.
- All transcripts should include course name, credit and grade, graduation date, and a signature affirming that it is the official record of academic studies.
- If any high school credit was earned in a formal high school setting or college, the applicant must submit an official copy of the transcript from the respective school.

TRANSFER APPLICANTS

Primary consideration is given to the applicant's overall grade point average and overall number of credit hours taken. Typically, students should be taking 14 to 16 credit hours per semester of coursework; similar to what is taken by a Kettering University student. Candidates who have not pursued full-time collegiate study and/or followed a program that does not include extensive study of math and science will be evaluated individually on their high school and college records as well as their test scores.

APPLICATION REQUIREMENTS:

- Completed application.
- Official high school transcripts.
- Official college transcripts from all previously attended colleges/universities.
- ACT or SAT scores (if you have completed less than 30 credit hours at another college or university).
- List of courses in progress.
- Catalog(s) with course descriptions from each college attended.

INTERNATIONAL APPLICANTS

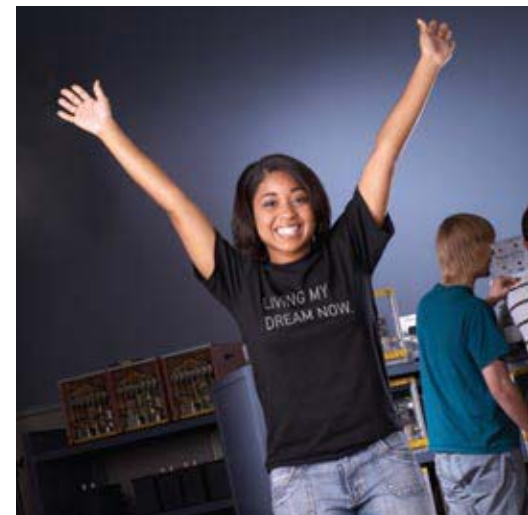
Students from around the world come to Kettering's campus to learn from experts in our labs and our challenging degree programs that put their brains to work in the classroom and on the job. Currently,

Kettering enrolls 2,600 undergraduate students from 48 U.S. states and 22 countries and is authorized under Federal law to enroll nonimmigrant students.

APPLICATION REQUIREMENTS:

- A completed application.
- Secondary school transcripts.
- SAT/ACT and/or TOEFL.
- IELTS may be considered.
- Personal Statement that highlights student's work experience, accomplishments, honors, and activities.
- Two letters of recommendation.
- Financial proof.
- F-1 Student Visa.

Please visit admissions.kettering.edu for more admissions information. ■



Wherever Life Takes You!

Genesee County residents take millions of rides on MTA public transit vehicles each year. We're working hard to provide Flint and Genesee County with safe, reliable, low-cost public transportation wherever life takes you. Now and in the future.



(810) 767-0100

Helpful Resources

Office of Admissions
 (810) 762-7865 or Toll-Free at
 (800) 955-4464, ext. 7865
admissions@kettering.edu
www.admissions.kettering.edu

Office of Cooperative Education & Career Services
 (810) 762-9846 or Toll-Free at
 (800) 955-4464, ext. 9846
co-op@kettering.edu
www.kettering.edu

Office of Financial Aid
 (810) 762-7859 or Toll-Free at
 (800) 955-4464, ext. 7859
finaid@kettering.edu
www.admissions.kettering.edu/money

Office of Academic Services
 (810) 762-9775
academics@kettering.edu
www.kettering.edu/academicservices

Registrar's Office
 (810) 762-7476
registrar@kettering.edu
www.kettering.edu/registrar

Campus Safety
 Chief: Jim Bedford
 (810) 762-9501

Parents' Advisory Council
 Director: Deborah Stewart
 (810) 762-9679
www.kettering.edu/parents
dstewart@kettering.edu

Zelpha McKinnon Wellness Center
 Director: Deborah Williams-Roberts
 (810) 762-9650
droberts@kettering.edu
www.kettering.edu/wellness

Residence Life: Frances Willson Thompson Hall
 Director: Antonio Riggs
 (810) 762-9537
ariggs@kettering.edu
www.kettering.edu/thompsonhall

Orientation
 Director: Deborah Stewart
 (810) 762-9679
dstewart@kettering.edu
www.kettering.edu/studentlife/new_student_orientation.jsp

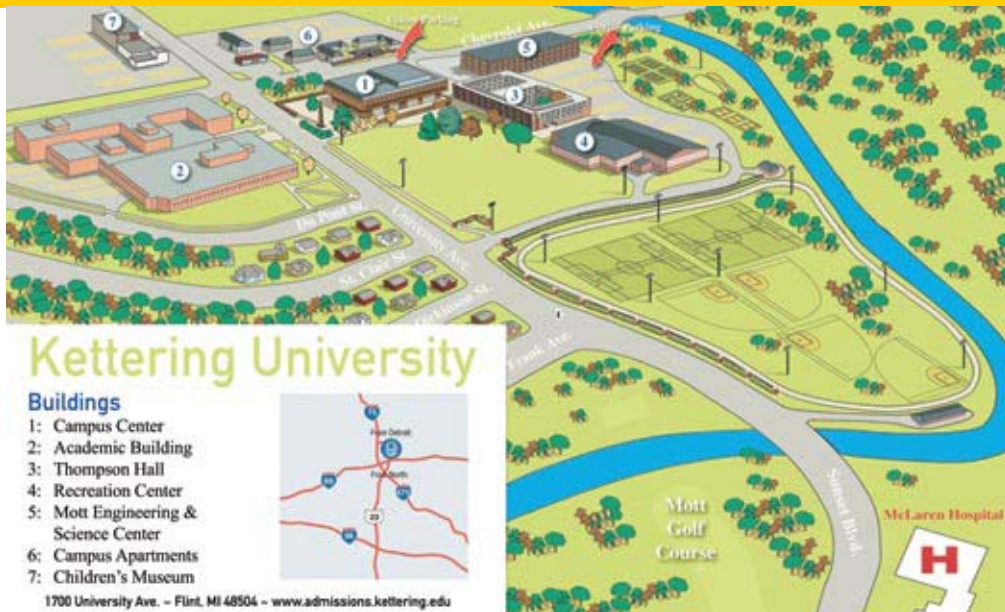
Greek Life
 Director: Robert Marias
 (810) 762-9743
rmarias@kettering.edu
www.kettering.edu/greeklife

Recreation Services & Connie & Jim John Recreation Center
 Director: Mike Schaal
 (810) 762-9732
mschaal@kettering.edu
www.kettering.edu/recservices

FOR A COMPREHENSIVE ACADEMIC CALENDAR PLEASE VISIT:

www.kettering.edu/academicservices/docs/academic_calendar_20102011.pdf

Campus Map



Three Great Hotels in One Great Location



Holiday Inn

- Complimentary High Speed Wireless
- Cable / Satellite TV
- Health & Fitness Center
- Heated Indoor Pool, Dry Sauna and Jacuzzi
- Business Center
- 15,300 sq. ft. of Conference Space
- Gameroom
- Kids under 10 Eat Free
- J Porter's, an American Bistro Steakhouse - *Recently voted "Best Restaurant of the Year" in Genesee County*



5353 Gateway Centre
 Flint, MI 48507
 (810) 232-5300
www.flintgateway.com



- Complimentary High Speed Wireless
- Marriott's Spring Air Pillow-Top Mattress
- Fitness Center
- Heated Indoor Pool
- Business Center
- 24 Hour Market Place
- The Courtyard Cafe



5205 Gateway Centre
 Flint, MI 48507
 (810) 232-3500
www.marriott.com/FNTCY



- Spacious Suites with Full Kitchen
- Complimentary Hot Breakfast Buffet
- Complimentary High Speed Wireless
- 24 Hour Market Place
- Fitness Center and Sports Court
- Health & Fitness Center
- Heated Indoor Pool
- Business Center



2202 West Hill Road
 Flint, MI 48507
 (810) 424-7000
www.marriott.com/FNTRI

Receive 15% off Regular Rate when you present this booklet with ad attached to your Hotel of Choice.

• ALL SHUTTLE PROVIDED BY THE HOLIDAY INN GATEWAY CENTRE •

**Campus
Village**

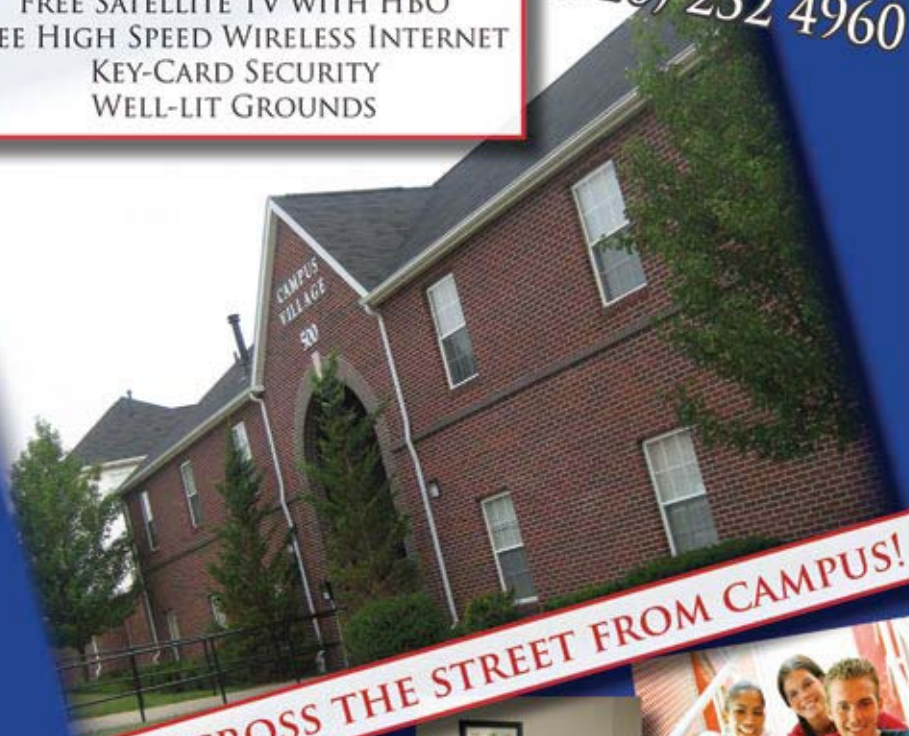


**500 CHEVROLET AVE.
FLINT, MICHIGAN**

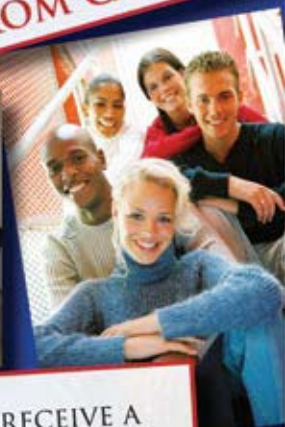
COMMUNITY FEATURES

2, 3 & 5 BEDROOM UNITS
FREE SATELLITE TV WITH HBO
FREE HIGH SPEED WIRELESS INTERNET
KEY-CARD SECURITY
WELL-LIT GROUNDS

CALL TODAY!
(810) 232 4960



DIRECTLY ACROSS THE STREET FROM CAMPUS!



**SIGN A LEASE & RECEIVE A
FREE GIFT!**

WWW.CAMPUSVILLAGE.COM