

UNIVERSITY PARENT
GUIDE



2011

**Missouri State
University**

CAMPUS RESOURCES – LOCAL INSIGHT – HELPFUL INFORMATION

JQH ARENA.

BEARWEAR
TEAM STORE



Buy Your Game Apparel Here!

685 S. John Q. Hammons Pkwy. Springfield, MO 65806

417.836.TEAM (8326) Toll Free 888.767.2578

www.MissouriStateBookstore.com

Hours: Monday - Saturday 10 - 6 Extended Hours on Game Days

Missouri State™
B O O K S T O R E
b e a r w e a r & b o o k s

Open to the Public - Visitors Welcome!

717 S. Florence Ave. Springfield, MO 65807

417.836.5403 Toll Free 888.767.2578

Hours: Mon - Thurs 7:30 - 6:30 Friday 7:30 - 5:30 Saturday 12:00 - 4:00



**UNIVERSITY
PARENT**

Brings You

the Online



MSU
GUIDE



This online resource for parents features the best places to

shop
eat
relax
stay
unwind
play
visit
explore
and more...

www.universityparent.com/missouristate

Or find us with your mobile device!

Simply download a QR scanner app to your mobile device and scan the QR code to the right!



UNIVERSITY PARENT CONNECTION

University Parent Media
3800 Arapahoe Avenue, Suite 210
Boulder, CO 80303
Phone: (866) 721-1357
Email: ask@universityparent.com

PUBLISHER
Sarah Schupp

VP OF OPERATIONS
Jon Saints

SALES REPRESENTATIVES
Allison Black
Rebecca Boozan
Mike Gooley
Scott Greisser
Sharon Haddad
Jon Hydeman

PRODUCTION DEPARTMENT
Grace Cassara
Eric Hosmer
Lee Riley
Meg Steinborn

OFFICE MANAGER
Linsey Straugh

DESIGNER
Adam Walsh

FOLLOW US ON:

 facebook.com/collegeparents

 twitter.com/4collegeparents

 **UNIVERSITY PARENTmedia**

The presence of Missouri State University logos and marks in this Guide does not mean the school endorses the products or services offered by advertisers in this Guide.

Advertising Inquiries:
(866) 721-1357
ads@universityparent.com

©2011 University Parent Magazines, Inc.



Missouri State
UNIVERSITY

Family/Parent Program

Missouri State University
901 South National - PSU 417
Springfield, MO 65897
417) 836-7641

FamilyAssociation@missouristate.edu
www.missouristate.edu/parents

About Our Guides

University Parent Media works closely with institutions around the country to bring together the most relevant, timely information into one all-inclusive resource.

We have published this guide with the mission of helping you easily navigate the university and its surrounding community. Ultimately, we hope these resources help nurture your connection and involvement in your student's college years!

Make the Most of Your Parent Guide

- Hang on to your Guide! Inside you'll find information that's useful all-year long, including important phone numbers, web sites and calendars.
- Store your copy in a purse or glove compartment for convenient reference.
- Pass it along to parents of prospective college students to promote the school.
- Please recycle when finished!
- Discover more content, tips and local business information by visiting us online at: www.universityparent.com/missouristate



contents

6 | Missouri State University Guide

Comprehensive advice, information for campus success

- 6 | Welcome from the Missouri State Family Association
- 8 | Save the Date for Family Weekend! September 30-October 2
- 9 | Tips for Parents and Families
- 11 | Partners in Education / Family Education Rights and Privacy Act
- 12 | Academic Resources
- 15 | University Offices
- 17 | Campus Services
- 20 | Visitors Map
- 22 | Safety and Security
- 23 | Parents Campaign for the Library
- 23 | Residence Life and Services
- 25 | Missouri State Athletics

26 | Springfield Community

Make the most of your visit by getting to know the area

- 26 | Welcome to Springfield!
- 28 | Springfield Attractions

32 | Resources

Must-have knowledge to navigate your way

- 32 | Contacting your Student
- 33 | Important Dates
- 34 | Recommended Reading for Parents/Families
- 35 | Terms to Know
- 37 | I Wish my Family had Known...
- 38 | Proud Supporters of MSU

Welcome from the Missouri State University Family Association



At Missouri State University, we communicate to students that we expect our University to be a place where students are challenged to excel in and out of the classroom. We also convey that students should expect assistance, support, and guidance during their college experience. The encouragement and resources to assist our students at Missouri State come from a partnership of many individuals who are focused upon student success—faculty, staff, and student leaders.

We invite you, as your student's parents and family members, to join us in this partnership. You play a critical role in your student's success; students regularly report that the most significant support and encouragement they receive comes from their parents and families, and

parental involvement positively influences a student's likelihood of graduating. As a parent or family member, you may also need support while your student is attending college. The Family Association aims to offer you this support by providing regular communications about campus events and tips for encouraging your student's success, serving as a point of contact for questions you may have, and offering fun campus events in which students and their families can participate together. Please become a member of the Family Association by visiting our website at www.missouristate.edu/familyassociation.

We genuinely want all parents and family members to be a part of the Missouri State experience. We encourage coming to campus during Family Weekend activities,

homecoming, the annual Public Affairs Conference, division I athletic contests, cultural events, and any of the hundreds of other exciting and enjoyable events that occur on campus throughout the year.

Missouri State University is a great place to live, learn, and grow! We look forward to meeting you, and we pledge that we will do our best to create a wonderful Missouri State experience for you and your student.

Sincerely,

Joe Morris
Director of SOAR

Brookli Pollock
Graduate Assistant

Beth Bunton
Family Program Student Specialist

About the Family Association

The mission of the Missouri State Family Association is to provide parents and family members an opportunity to play an active, supporting role in the education of their student, to provide forum for fellowship and networking with other parents and families, and to further the educational goal of Missouri State University by improving communication between parents and the University community.

Communication

The most fun and exciting perk to being a member of the Family Association is receiving our monthly e-newsletter. These communications keep parents informed of what is going on campus, upcoming dates and reminders, special news, and fun facts about Missouri State!

The Family Association welcomes questions, comments, and suggestions. Contact at FamilyAssociation@MissouriState.edu

Become a Member of the Family Association

Becoming a member of the Family Association is easy! Just complete the online form at www.missouristate.edu/familyassociation/membership.htm and we'll send you our monthly e-newsletter and inform you about special events and news at Missouri State University. ■



Missouri State
UNIVERSITY

Save the Date for Family Weekend! September 30-October 2

The Missouri State Family Association invites you and your family to attend Family Weekend 2011 on September 30 through October 2. Family Weekend is an excellent opportunity to visit your student at their new college home and experience their life in the Missouri State and Springfield communities. Your student will be thrilled to show off their favorite parts of campus and Springfield, the new friends they have made, and the ways in which they have developed into a successful student. You can also meet other parents of Missouri State students and become acquainted in a fun and informal setting.

Some tentative special events for Family Weekend include:

- **Bearfest Village, Missouri State's Tailgating for the first home football game vs. Northern Illinois**
- **Campus tours**
- **Golf Tournament**
- **5K Fun Run**



More fun and exciting events for students and families are being planned, as well! We hope you take this opportunity to visit your student and enjoy the Missouri State campus. More information about Family Weekend 2011 will be available on the Family Association website at www.missouristate.edu/familyassociation as the weekend approaches. We hope to see you there! ■

Motel 6
Loves to Save You Money



Near MSU Campus!
Free Expanded Cable
Guest Laundry
WiFi
Free Local Calls
Free Morning Coffee
Pets Welcome
Kids Under 18 Stay Free

Rates from \$39.99



2655 N. Glenstone Ave.
Springfield, MO 65803
motel6.com
800-4 Motel 6



Tips for Parents and Families

Talk to others.

Many parents are going through a similar experience. Talk to those individuals. Keeping in contact with other parents keeps issues and situations in perspective. It will also make it easier to share feelings and experiences with people you already know and trust.

Expect change.

College life is a very diverse environment and your student is being immersed in it, so be prepared for your student to change. They are going to be facing many new challenges and their morals and beliefs will be tested. They will learn some things about themselves that they will want to change and some things that they will want to keep the same. Although it will seem that they change more than stay the same, remember that at their core, they are the same person they were when they went away for school.

Don't ask if your student is homesick.

New students are busy adjusting to their new surroundings, making new friends, joining organizations, and managing their

time. Asking them if they're homesick will only remind them of all the new obstacles they must face everyday and make them long for that simpler lifestyle back home.

Visit.

Students love to show off their new room, friends, organizations, and college life to their loved ones. Nothing makes it easier to do than a family visit to campus. Just keep in mind that the best visits are those that are planned with your student in advance. A shopping trip and dinner out are always great as well. They might even want to catch a movie with you!

Ask questions, but not too many.

College students love their new found freedom and can often times get a bit frustrated when asked too many prying questions. Ease into any conversation with your student and don't jump right out with the "have to know" questions. They will be more willing to give you the information you want if you are willing to hear about the information that interests them. Perhaps they will get talking and answer a question you wanted to ask without having to ask it. ►

Trust your student.

There are many decisions that your student is facing on their own for the first time, knowing that you fully trust and support them will help your student make the right decisions and be confident in the decisions he or she makes. Your continual support will also help them recover from the poor decisions that they might have made.

Don't tell your student that "these are the best years of your life."

College is a wonderful experience for most students, but it has its ups and downs just like any other times in our lives. It is better to accept the highs and lows of your student's development and act as a support group for him or her.

Be prepared for emotional phone calls home.

Students face new challenges every day and sometimes it can get overwhelming.

When they finally reach the breaking point, often times the best place to turn is to the family. Let them open up and unload all their troubles. They will feel better and be more willing to share the good news, so that you can better put things into perspective.

Write often.

Students check their mailboxes at least once a day. Nothing brightens up a day like seeing a letter or a slip that says "Package" in their mailbox.

Take photos.

Take pictures of your family and life at home so that your student can stay connected to the experiences at home and at the same time make sure to take photos of your student at school so you can stay better connected with their experiences. Digital cameras, social networking, and e-mail have made this so much easier! ■

Alma Mater

**Sing We Praises,
Now to Our Alma Mater,
All Hail Maroon and White,
Missouri State,
We Pledge Devotion,
May You Live Ever in Truth and Light.
May You Live Ever in Truth and Light.**



Partners in Education (PIE) /Family Education Rights and Privacy Act (FERPA)

Missouri State University adheres to a policy of compliance with the Family Educational Rights and Privacy Act of 1974 (FERPA). 20 U.S.C. 1232g. Eligible students have four primary rights under FERPA including the right to:

- **Inspect their education records,**
- **Consent to disclosure of personally identifiable information except to the extent that FERPA authorizes disclosure without consent,**
- **Seek correction of their records, to prevent inaccurate or misleading information, and**
- **File a complaint with the U.S. Department of Education if they feel their rights are being violated.**

Directory information may appear in public documents and may otherwise be disclosed by the University for any purpose in its discretion, without the student's consent. Students may choose to not disclose directory information by completing the proper forms in the Office of the Registrar. Directory information at Missouri State University includes name, address, telephone number, and campus e-mail; a complete list of what constitutes directory information may be found in the "Notification of Student Rights" available

at www.missouristate.edu/ferpa/. Partners in Education (PIE) helps address the needs of freshmen by creating a partnership of students, their families, and Missouri State University with the goal of improving the academic success and retention of students. The Academic Assistance Office at Missouri State University offers membership in Partners in Education to families whose students sign a waiver allowing information concerning academic progress, curricular changes, and advisement concerns, as well as mid-term progress and final grades to be disclosed to the family. This release does not apply to any information other than academics, which are also protected by FERPA. The student has the right to withdraw the release at any time. For more information regarding PIE, contact the Academic Assistance Office at (417) 836.5034 or visit www.missouristate.edu/partnersineducation.

Release forms must be completed for each office that is asked for information. If students are seeking assistance in finding forms they should contact individual offices. Additional information regarding FERPA can be found at www.missouristate.edu/registrar/FERPA.html. ■

The Extras Aren't Extra!

- \$0.00 Hot *QUICKSTART*® Breakfast
- \$0.00 Hot Food & Cold Beverages
- \$0.00 Wireless Internet Access
- \$0.00 Long Distance
- \$0.00 Indoor/Outdoor Pool & Whirlpool

Special University

\$94.99 1-2 People, Std Rm

Rate Code 313759







Drury Inn & Suites-Springfield
2715 N. Glenstone Ave. | Springfield, MO 65803

Must Request Code 313759 to Receive Rate

DRURY HOTELS
druryhotels.com | 1-800-DRURYINN

Service of alcohol is subject to state and local law. Rates are per night plus tax and are valid for 1-2 people in a standard room. Available at this hotel only. Block-out dates may apply. Rates are net, non-commissionable and subject to change without notice. Not valid for groups or with any other discount, special offer or package. Offer expires 5/25/12



Academic Resources

Academic Advisement Center

University College Hall
109; (417) 836-5258

www.missouristate.edu/advising

Academic advisors in the Advisement Center provide assistance to students who are undecided about their major field of study at Missouri State University. Students should contact their advisor directly if they have a declared major. Advisors help students with course planning and scheduling, make referrals to on-campus support services, and encourage students to get the best possible education at Missouri State.

BearCLAW (Center for Learning and Writing)

Meyer Library, First Floor, Southeast Corner; (417) 835-6398

www.bearclaw.missouristate.edu

The BearCLAW provides space for students to find other students, who are peer tutors, who can assist them to be successful in courses. Students can meet with University-provided

subject area tutors, writing consultants, and supplemental instruction leaders in a space designed to foster informal, collaborative work and social interaction. Additionally, throughout the semester student success seminars are coordinated and presented by faculty, staff, and graduate students involved with the BearCLAW and Learning Commons. At the BearCLAW's open computer lab, students are able to access online course materials or access their draft papers while working with tutors and Writing Center consultants. There are numerous tutor opportunities for high achieving work study students and students seeking on-campus employment. To work in the BearCLAW, students should have completed one semester on the Springfield campus.

The Career Center

Carrington Hall 309; Glass Hall 103; (417) 836-5636

www.careercenter.missouristate.edu

The Career Center assists students

with all of their career development and job search needs. Students can make individual appointments with staff members to identify, understand, and research careers and majors. Staff members can help students explore current information on working conditions, job outlook, salary, and education requirements for hundreds of career possibilities. The Career Center also provides assistance to students seeking internships or full-time jobs.

Citizenship and Service-Learning (CASL)

Plaster Student Union
209; (417) 836-5774

www.missouristate.edu/casl

As part of Missouri State's public affairs mission, students in selected designate courses have an opportunity to make a difference in the community while gaining academic credit, similar to a "mini internship." Some courses, such as certain sections of GEP 101, incorporate service-learning throughout the course and all students in the class have a shared experience. Other classes provide service-learning as an option for individual students. Service-learning partners students with a nonprofit or government agency and provides an experience that directly relates to course content while still contributing to the community. Through this program, students can:

- Test career choices and areas of interest before graduating from college
- Gain valuable "real world" experience which helps to build resumes
- Improve personal development skills (e.g. problem solving, time management, decision-making, communication)
- Increase learning of subject matter by applying theories and concepts learned in the classroom

To learn more about which academic courses offer service-learning, please contact the CASL office.

Counseling and Testing Center

Carrington Hall 311; (417) 836-5116

www.counselingandtesting.missouristate.edu

The primary goal of the Counseling and Testing Center is to promote students' personal development and psychological well-being. Experienced professional counselors, psychologists, social workers, and graduate students assist clients in resolving conflicts which may interfere with their progress at the University. The Center offers individual and group counseling sessions, educational programs, consultations and referrals, and emergency and crisis services; it also administers several national standardized tests.

The Center's counseling services are free and strictly confidential; no information, including whether an individual has received counseling, will be released without the informed written consent of the client, except in certain emergency situations. Students are encouraged to utilize the Counseling and Testing Center if they encounter personal-social concerns or life-planning issues.

International Services

International Center: Morris Center for Continuing Education; (417) 863-6618
301 S. Jefferson

www.international.missouristate.edu

The Office of International Student Services provides admission and retention services for international students and intercultural awareness programs for the University and the local community. Questions regarding international students, membership in the Association of International Students, culture awareness programming and technical questions related to Department of Homeland Security student regulations are welcome and encouraged.

Learning Diagnostic Clinic

Alumni Center 502; (417) 836-4787

www.psychology.missouristate.edu/ldc

The primary mission of the Learning Diagnostic Center (LDC) is to assist ►

Missouri State University in complying with certain aspects of the Americans with Disabilities Act's laws and guidelines. The LDC serves students who are diagnosed as having a learning disability, psychological disorder, and/or a neurological disorder. This service is provided at no charge. Prospective students who need support services through the clinic need to first register with Disability Resource Center.

Multicultural Student Services

Carrington Hall 302; (417) 836-3043

www.multicultural.missouristate.edu

The Office of Multicultural Student Services operates as a support service, designed to assist students from diverse backgrounds in their overall development as they pursue a course of study. Additionally, the staff of the Multicultural Student Services Office coordinates a number of programs established to enhance the educational, cultural, and social development of a wide variety of students and celebrate the diversity of the University community.

Office of the Registrar

Carrington Hall 320; (417) 836-5520

www.missouristate.edu/registrar

The Office of the Registrar oversees activities related to course enrollment and maintenance of student records. It also annually produces the Undergraduate Catalog and provides services to veteran students. For information regarding course enrollment and registration—including resources and instructions—please visit the website above.

Study Away Programs

Morris Center for Continuing Education; (417) 836-6368

www.international.missouristate.edu/studyaway/

Missouri State offers extensive study away opportunities in which students can spend an academic semester studying in a foreign country or at another university in the United States or U.S. Territories.

The Study Away Office helps students find programs that suit their needs. The office holds drop-in "First Step" meetings



each week for students to ask questions and get information on studying away. Students who study away through approved Missouri State programs are guaranteed to receive academic credit for their classes abroad and are eligible to use their financial aid packages and scholarships to help pay for the programs.

University Libraries

Duane G. Meyer Library; (417) 836-4525

www.library.missouristate.edu

The Missouri State University library system is comprised of the Duane G. Meyer Library, the Music Library, the Haseltine Library at Greenwood Laboratory School, Garnett Library on the West Plains campus, and the Evans Library on the Mountain Grove Campus. Students have access to a wide variety of materials by using the latest technology, such as online record catalogs. Students can check out materials from academic libraries around the state and have them delivered to Meyer, Mountain Grove, or West Plains. There are more than 137 public workstations in the libraries. In addition to citations from thousands of journals and newspapers, over 170 electronic resources contain articles from more than 27,000 journals and newspapers in full-text. Access to library resources is available on the web. There are twenty-one group study rooms, an open computer labs, a coffee shop, lobby lounge, and Wi-Fi for student use. ■

University Offices

Dean of Students Office

Plaster Student Union

405; (417) 836-5527

www.missouristate.edu/dos

The primary role of the Dean of Students Office is to assist students in accomplishing personal and educational goals. The office provides a variety of services for students and should be contacted when students are confronted by an issue or concern, or if students have a question about how to enhance their education. Staff members are available to answer questions, refer students to appropriate resources and help students navigate their way through University procedures. The office also serves as a resource to parents, faculty, and staff when questions or concerns arise.

There are three main categories of services within the umbrella of the Dean of Students Office: Residence Life and Services, Student Conduct, and the Disability Resource Center. Residence Life and Services includes an award-winning system that provides a variety of living environments, programs and services. Student Conduct educates students about behavioral choices and holds them accountable for their actions.

The Disability Resource Center helps remove barriers that might make personal and educational goals more difficult to reach and provides resources and guidance to students on an individual basis. The Dean of Students Office also offers notary services, voter registration and access to free legal advice from a local attorney.

Office of Student Conduct

Plaster Student Union 405; (417) 836-6937

www.missouristate.edu/studentconduct

The mission of the Office of Student Conduct is to educate students concerning their rights, privileges and corresponding duties and responsibilities.

We recognize that every facet of student life is an opportunity for learning and inquiry. The Code of Student Rights and Responsibilities, along with other University policies, are educational tools designed to assist students in their development as active, involved, and responsible citizens. The office strives to maintain a balance, fostering the exercise of individual rights while maintaining and enhancing an academic environment within a caring, civil, and safe community. This can best be achieved through a ►

participatory educational process where students encounter the fair and impartial enforcement of University policies and mediation of conflicts, leading to understanding and acceptance of the consequences of their behaviors. Student Conduct also serves as a resource to student organizations, University departments, and individual faculty, staff and students who may be victimized by other students or student organizations.

Disability Resource Center

Plaster Student Union 405
(417) 836-4192 or (417) 836-6792 (TTY)
www.missouristate.edu/disability
Missouri State University is committed to providing an accessible and supportive environment for students with disabilities. Academic accommodations are available at no cost to students who can provide documentation of a disability from a qualified specialist and can demonstrate that the requested accommodations are necessary for participation in University programs. To initiate request for academic accommodations, a student must contact Disability Resource Center.

The Office of Student Financial Aid

Carrington Hall 101; (417) 836-5262
www.missouristate.edu/financialaid
The Office of Student Financial Aid offers several types of financial assistance, including scholarships, grants, loans, and employment opportunities. Funding for these programs comes from institutional, federal, state, and private sources. Financial aid is made available to students who may not have sufficient financial resources to cover all college expenses. Specific information about financial aid programs for entering freshmen and can be found on our website. ■



Missouri State
UNIVERSITY

The Clinic

at Walmart

allergies

sinus infection

sprains

Get
well
soon.

Locations

Springfield (Independence)
885-1445

Springfield (Campbell)
886-2219

Ozark 581-3006

Republic 732-2255

Monday - Saturday,
10 A.M. - 7 P.M.

Sunday,
11 A.M. - 4 P.M.

No Appointment
Necessary.

strains

sore throat

earache

colds

flu

Wal-Mart is not responsible for the health care treatment provided in this clinic.

COX HEALTH

Campus Services

Missouri State Bookstore

Morris Hall; (417) 836-5403

www.missouristatebookstore.com

The University-owned and operated Bookstore is where students can purchase textbooks as well as course-related material, reference books, general reading books, academically priced hardware, software and peripherals, and a variety of official Missouri State apparel. The Bookstore also carries art, drafting, science, and other classroom supplies in addition to health-related items and a full-service Clinique counter. The Missouri State Bookstore also has affiliates across campus including: Computer Connection, BearHouse Entertainment, PawPrints, It's a Greek Thing, Bear Necessities, and ETC. The Textbook Reservation is the best way to get the books and course materials your student needs. Students may obtain their textbooks and course materials using the Bookstore's Textbook Reservation Program; for more information, please visit www.missouristatebookstore.com/TextRes.htm.

Bursar's Office

Carrington Hall, First Floor; (417) 836-5128

www.missouristate.edu/bursar

The Bursar's Office main function is cashier for the University. The office processes payments from students, faculty, staff, and University departments and businesses. It also cashes personal checks. Payments to the University and questions regarding students' accounts should be directed to the Bursar's Office.

Paying Students' Accounts Online

In order for parents and family members to access copies of a student's account statements and make payments online, students must first create a Parent PIN. Instructions for the students and family members on how to create a Parent PIN can be found at www.missouristate.edu/SOAR/cashnet.htm.

CopyThis

Plaster Student Union 210; (417) 836-5808

www.missouristate.edu/printing/copythis.htm

This one-stop copy shop has both self-service and full service operations: black/white and color copies, tape, spiral and coil binding, lamination, posters and banners, and computer services, all at great savings.

Campus Recreation

Plaster Student Union 131; (417) 836-5334

www.missouristate.edu/recreation

Campus Recreation offers students opportunities to remain active, stay fit, and meet other students through participation in intramural sports, fitness, wellness activities, outdoor trips, and workshops. A state-of-the-art University Recreation Center is scheduled to be completed in Fall 2011 and will include a recreational pool, climbing wall, three-court gymnasium, indoor jogging track, complete fitness center, and multi-purpose rooms.

Dining Services

Blair-Shannon House 114; (417) 836-5660

www.missouristate.edu/dining

Dining services at Missouri State are provided by Chartwells. Students may purchase meal plans containing 10, 14, 19, or an unlimited amount of meals per week. Students use their Missouri State ZipCard as their meal ticket; a computerized system keeps track of the number of meals used. Students living on campus purchase their meal plan along with their residence hall payment. Commuting students may purchase a traditional meal plan to be used within the dining centers or a block plan which contains a fixed number of meals that can be redeemed in the dining centers or various food vendors across campus. Contact Dining Services for more information regarding various meal plan options. ►

Student Employment Services

Blair-Shannon House 113; (417) 836-5627

www.missouristate.edu/studentemp

Student Employment Services keeps an active file of permanent and temporary part-time jobs, from on campus and in the Springfield community. Any currently enrolled student of Missouri State is invited to access the job locator database by visiting the website above and logging on with his or her BearPass Login and password.

Taylor Health and Wellness Center

Morris Hall; (417) 836-4000

www.health.missouristate.edu

Students' required fees include a health fee, which provides them with unlimited prepaid basic office visits at Taylor Health and Wellness Center each semester when seeing a clinic physician. These health services include a primary clinic for diagnosis and treatment of illnesses and injuries, women's health care, nursing, a full-service pharmacy with both prescribed and over-the-counter medications, diagnostic laboratory testing, radiological procedures and interpretations, and wellness programming. Consultation services in orthopedics, internal medicine, gynecology, dietetics, diabetic education, radiology, and psychiatric care are also provided. Health services are provided by a staff physicians, nurses, pharmacists, technicians, and support staff. Charges are often incurred for laboratory tests, X-rays, pharmacy, and certain other procedures, as are visits with a consulting physician.

Telecommunication Services

Blair-Shannon House 153; (417) 836-8580

www.telecom.missouristate.edu

communication Services provides local and long distance service to faculty, staff, and resident students. Students living in residence halls on the Missouri State campus can obtain local/long distance service from Telecommunication Services by visiting the Telecommunications Center in Blair-Shannon House.

The ZipCard Office

Plaster Student Union 128; (417) 836-8409

www.missouristate.edu/zip

The "ZipCard" is the official Missouri State multipurpose student identification card. It is the required method of identification on campus. It verifies the student's identity to cash a check at the Bursar's Office, transact business, check out materials at the library, obtain services at the health center, and utilize their meal plan. It can be used in various vending machines around campus, at several of the copy machines in the library and residence halls, the Bursar's Office, Missouri State Bookstore, Bear Necessities, CopyThis, and the Level 1 Games Center in Plaster Student Union.

Office of Student Engagement

Plaster Student Union 101; (417) 836-4386

www.missouristate.edu/studentengagement

The Office of Student Engagement (OSE) is here to provide students with a strong co-curricular experience that will allow them to explore their total potential and develop into productive citizens of enhanced character. The office accomplishes this by providing diverse programs and services that complement the educational mission of the University while offering students the opportunity to develop as leaders. The OSE oversees the University's 300-plus student organizations and coordinates major campus events such as Bear Bash, New Student Festival, Sample Springfield, College Bowl, the STAR Awards, May Day, and After Hours late night programming. During Homecoming Week, the OSE hosts various competitions and events for students to participate in, all in celebration of our great University and community. These campus traditions have become a fun and exciting way for students to get involved on campus.

Student Activities Council

Student Activities Council (SAC) at Missouri State works to enhance and unify the university community by providing opportunities for growth and personal development through planning

and participating in social, cultural, and educational events. By effectively utilizing the Student Involvement fee, SAC aims to provide the best outside of classroom experiences at Missouri State. As a student voice, SAC encourages involvement through research, planning, budgeting, and successfully presenting program such as lectures, debates, comedy, and cultural events. For more information, please visit the website at www.organizations.missouristate.edu/sac/.

Fraternity and Sorority Life

Missouri State currently has 13 national fraternities, 6 national sororities, 2 local sororities, and 6 NPC fraternities registered on campus. Each of the organizations has its own unique programs and characteristics, yet all are founded on generally the same principles: community involvement, academic excellence, and leadership. The figures below highlight just a few of the accomplishments of the Greek community at Missouri State:

- Fraternity and sorority organizations have contributed over 20,000 hours of their time to the surrounding community and have donated \$30,000 to local charities in the past year.
- Fraternity and sorority members' average GPA consistency exceeds that of the all campus average GPA.
- Fraternity and sorority life at Missouri State has produced more campus leaders than any other organization on campus.
- Being in a fraternity or sorority at Missouri State offers a great opportunity for involvement and success of your student.

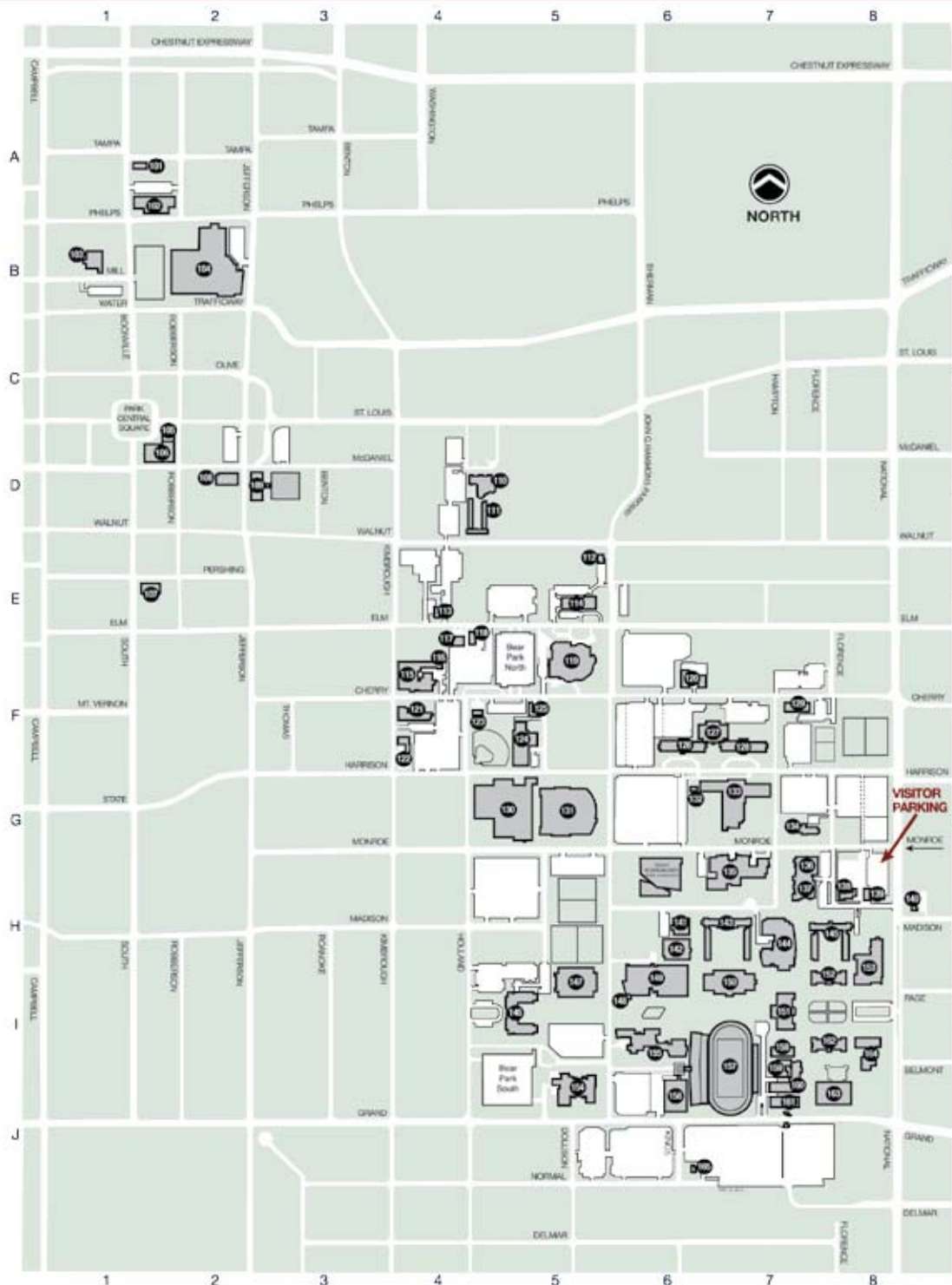
We encourage all parents and students to explore the benefits of joining our Greek community. Please visit the parents' section on their website at www.missouristate.edu/studentengagement/greeklife.htm for additional facts and information.

www.universityparent.com/missouristate

Statement on Hazing

Both Missouri State University and fraternity and sorority community do not condone or tolerate hazing. Hazing is defined as any action taken or situation created, whether on or off fraternity/sorority property, to produce mental or physical discomfort or ridicule. Sanctions and disciplinary actions will be taken against those who haze and, in some cases, those who allow hazing to continue unchallenged. Please see our policy on hazing in Article 4.5 of the Code of Student Rights and Responsibilities at www.missouristate.edu/studentrights. ■





2010-2011 VISITORS MAP

FACILITIES

Art Annex	147	7-I	One-Room School House	132	6-F
Baker Bookstore	137	7-G	Park Central Office Building	106	1-C
Blair-Shannon House	135	6-G	Physical Therapy Building	121	3-F
Blunt Jordan Valley Innovation Center, Roy	102	1-A	Plaster Center for Free Enterprise and Business Development, Robert W.	104	2-B
Brick City	103	1-A	Plaster Sports Complex, Robert W.	157	6-I
Burgess House	140	8-G	Plaster Student Union, Robert W.	144	7-H
Carrington Hall	151	7-H	Power House	159	7-I
Central Stores & Maintenance	156	6-I	Professional Building	115	3-E
Cheek Hall	153	8-H	Pummill Hall	158	7-I
Child Development Center	116	4-E	Safety & Transportation Offices/Police Substation	117	4-E
Craig Hall	163	7-I	Scholars House	129	7-E
Custodial Offices	165	6-J	Sicheluff Hall	152	7-H
Dogwood Apartments	120	6-E	Strong Hall	146	4-H
Early Childhood & Family Development	113	4-E	Student Exhibition Center	112	5-D
Ellis Hall	164	8-I	Student Media Center	125	5-F
Forensics Laboratory	123	4-E	Survilla Tower	114	5-D
Forsythe Athletics Center	142	6-H	Taylor Health & Wellness Center	136	7-G
Freudenberger House	143	6-G	Temple Hall	155	6-I
Garst Dining Center	127	6-F	Transit Operations Center	118	4-E
Glass Hall, David D.	147	5-H	University Hall	138	8-G
Great Southern Building	107	1-D	Warren Center for Archaeological Research, Bernice	122	3-F
Greenwood Laboratory School	133	6-F	Wehr Band Hall	124	4-F
Hammons Hall for the Performing Arts, Juanita K.	119	5-E	Wells House	145	7-H
Hammons House	126	6-F	Woods House	134	7-F
Hammons Student Center, John Q.	130	4-F			
Hill Hall	162	7-I			
Hutchens House	128	7-F			
JOH Arena	131	5-F			
JVIC Labs	101	1-A			
Karls Hall	160	7-I			
Kemper Hall	154	5-I			
Kentwood Hall	110	4-C			
Kentwood South Apartments	111	4-D			
Kings Street Annex	141	6-G			
Levy/Wolf Building	105	1-C			
Madison Hall	139	8-G			
McDonald Hall & Arena	150	6-H			
Meyer Alumni Center, Kenneth E.	109	2-C			
Meyer Carillon, Jane A.	148	5-H			
Meyer Library, Duane G.	149	6-H			
Morris Center for Continuing Education, Jim D.	108	2-C			

MISSOURI STATE UNIVERSITY
is an
EO/AA INSTITUTION

Missouri State
UNIVERSITY

Safety and Security

Safety and Transportation

636 E. Elm; (417) 836-5509

www.missouristate.edu/safetran

The Department of Safety and Transportation coordinates vehicle and bicycle registration, safe walk services, parking, key issue, motor pool, the Missouri State Alert system, and campus safety.

Students who operate a motor vehicle on campus are responsible for being informed about Missouri State's parking and traffic regulations. A copy of the Missouri State University Parking and Traffic Regulations can be obtained at the Parking Administration Office in the Transit Operations Center at 700 E. Elm, or at the website above. Parking in a disabled space in a University parking lot requires a state-issued disabled parking permit. Concerns regarding a disability permit should be directed to the Parking Administration Office.

Bear Line Shuttle Service

The University operates a shuttle service for use by students, faculty, staff, and guests of Missouri State University. The shuttle is financed through student service fees and no fees are charged

during scheduled operating hours. The shuttle makes numerous stops at locations convenient to University parking lots, residence halls, academic buildings, Meyer Library, Plaster Student Union, Hammons Student Center, and Morris Center.

Safe Walk Services

Students who do not feel safe walking from one campus location to another during hours of darkness can request a public safety officer to accompany them. To obtain this service, students should call (417) 836-5509 and state their name, location, and destination. An officer will then be dispatched by radio to that location. We encourage students to add this number to their address book or contact list.

SHARP (Self Defense & Rape Prevention)

SHARP training teaches students how to protect themselves through prevention of attacks and learning techniques for escape. Valuable information about confrontation avoidance and self-defense techniques are shared in two evening course sessions conducted by the Missouri State University's Safety and Transportation Department. Please wear comfortable clothing and tennis shoes. This FREE course is designed for women. Class dates and times can be found on our website or through Campus Recreation.

Springfield Police Campus Substation

The Springfield Police Department maintains a substation on Missouri State University's campus. Located at 636 E. Elm, this substation places the officers on campus, making them readily available to and part of the University community. Commissioned Springfield police officers regularly patrol campus and partner with University faculty and staff to provide programs and information.



Parents Campaign for the Library

Parents of Missouri State students are contacted by the Missouri State Phone Campaign to bring them news from the University and seek their support for students through making a gift to Missouri State University Libraries.

Parents like you have been so supportive of our libraries by making gifts that help your student as well as future students at Missouri State.

The Parents Campaign has made the following contributions to the library:

- Online databases which cost from \$200-\$30,000 each. These make it possible for students to do research from their own computer.
- An endowed account that will provide funds to purchase new books for years to come.
- New books, the average cost of which is \$70.
- New resources for both Meyer Library and the Music Library.

Residence Life and Services

Hammons House 104; (417) 836-5536

www.missouristate.edu/reslife

Missouri State University provides students with housing facilities that reflect a strong commitment to education. Well-maintained living accommodations and highly trained staff provide opportunities for your student to grow as an individual through the development of new friendships, exploration of new ideas, and involvement in new activities.

University Housing

Missouri State requires all single students under 21 years of age who are admitted to Missouri State with fewer than 30 hours of transferrable credit are required to reside in University housing. Students commuting from a legal guardian's permanent address within 60 miles of Springfield may request, in writing, an exception to this policy.

Student Housing Contracts

For all other students, housing information and contracts are available upon request. All students may submit the housing contract and \$100 security deposit by mail or online upon admission. The housing contract is for an entire academic year—fall and spring semesters—or the remaining portion of the year at the time of occupancy. ■



Missouri State Athletics

Tickets: (417) 836-7678

www.missouristatebears.com

Missouri State Athletics sponsors Division I teams in baseball, men's and women's basketball, women's cross country, women's field hockey, football, men's and women's golf, men's and women's soccer, softball, men's and women's swimming and diving, women's track and field, and volleyball. More details about Missouri State Athletics, including schedules and ticket purchasing information, are available at the website above.

FIGHT SONG

*Uphold tradition our
school we hold so dear
We will be loyal throughout
our college years
Fight for victory as we
stand up and cheer
Let's hear it for the Bears!
B-E-A-R-S! Bears!
M-I-S-S-O-U-R-I-State! ■*

Windows® Life without Walls™ Dell recommends Windows 7.



Missouri State University students
get the best price
on consumer PCs from Dell*

If you find a better price on your day of purchase, contact a Dell University sales specialist and we will beat that price.

Inspiron™ duo

Switch from touch to type in seconds.

• Genuine Windows® Home 7 Premium

\$599⁹⁹

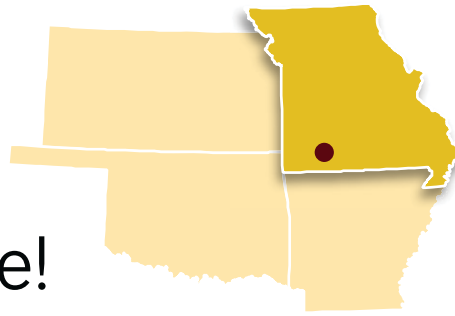
Your PC, simplified. Windows 7



Dell.com/dellu/MSU Member ID: US116016877

*BEST PRICE GUARANTEE does not apply to retail or reseller offers, Dell Outlet, affiliate websites, coupons, auctions or quotes from Dell sales representatives. You must present a valid E-value code or saved cart image with lower price to Dell U sales specialist on day of purchase prior to your transaction.

Welcome to Springfield, Home of Missouri State!



Dear Parents,

When your student selected Missouri State University to pursue a college degree, he or she selected a fine school set in a great city they will come to call home over the next four or so years. Springfield, the third-largest city in Missouri, offers plenty for your student year-round and for you when you're in the city for a visit.

Set in the rolling hills of the Ozark Mountain Range, Springfield is where the outdoors and indoors blend. Springfield was named a "Top 50 Adventure Town" by "National Geographic Adventure" magazine and a "Sportstown USA" by "Sports Illustrated."

Many of the city's finest amenities, in fact, are its outdoor activities and attractions, such as the Ozark Greenways Trails Network where walking, biking, running and skating are popular ways to see the city and enjoy the outdoors. Another great outdoor asset is the Springfield Conservation Nature Center. Not only does the center offer walking trails through a variety of natural habitats, you and your student will enjoy the informative visitors' center and free programs offered on a variety of topics. Other attractions include Wilson's Creek National Battlefield, Bass Pro Shops Outdoor World, Fantastic Caverns, dozens of city parks and public gardens and many others.

Your student also will enjoy the variety of dining and entertainment options, particularly in the downtown area near campus. Downtown Springfield is home to more than 40 locally-owned restaurants and is the site of many activities and events, such as First Friday Art Walk each month and annual events such as Artsfest, Cider Days, Taste of Springfield and the St. Patrick's Day Parade.

Along with things to do inside the city, Springfield is surrounded by plenty of day trip options, including the theme parks and shows in Branson, Table Rock Lake, streams and rivers, national forest and many other towns and attractions.

Those are just a small sample of what Springfield has to offer for residents and visitors alike. For more information about the city's attractions and events, call the Convention & Visitors Bureau at (800) 678-8767 toll free or (417) 881-5300 locally or visit the bureau's Web site at www.SpringfieldAdventures.com. Information also is available at the city's tourist information centers at 815 E. St. Louis St. just a few blocks north of campus, 3315 E. Battlefield Road or at Springfield-Branson National Airport.

Last, but not least, welcome to you and your student! We're pleased you chose Springfield and are sure you will enjoy your stay here.

Sincerely,

Tracy Kimberlin
President
Springfield Convention & Visitors Bureau ■



Springfield Attractions

7C's Winery & Vineyard

502 E. 560th Rd. • Walnut Grove
(417) 788-2263

www.7cswinery.com

Enjoy a day in the country. American Wine and Mead. Tasting Room and Gift Shop. Check Web site for events and directions. Drink What You Like & Like What You Drink.

(NE) Air and Military Museum of the Ozarks

2305 E. Kearney St.
(417) 864-7997

www.ammomuseum.com

"A Hands-On" museum for all ages. Take an imaginary flight in a Cobra helicopter, celebrate your next birthday party at the museum and have a personalized dog tag made.

(C) Askinosie Chocolate

514 E. Commercial St.
(417) 862-9900

www.askinosie.com

Askinosie Chocolate is a small-batch bean-to-bar chocolate maker specializing in single origin chocolate. The cocoa beans are 100% sourced directly from small farmers.

(C) Assemblies of God National Headquarters

1445 N. Boonville Ave.
(417) 862-2781, Ext. 2121

www.ag.org

Visit the Assemblies of God National Headquarters — an organization helping 60 million people worldwide. Daily guided tours include the Gospel Publishing House, which prints 12 tons of material every day. Don't miss the original mural artwork and interactive museum. Groups welcome!

(SW) Bass Pro Shops® Outdoor World®

1935 S. Campbell Ave.
(417) 887-7334

www.basspro.com

Granddaddy of all outdoor stores. Fishing, hunting, camping, boating, golf, gifts, footwear and apparel. Explore the 300,000-square-foot showroom loaded with unique features, including an art gallery, barber shop, firing range, Tracker boat showroom, waterfalls, aquariums, Hemingway's Restaurant, Starbucks and much more. Your adventure starts here.

(SE) Battlefield Mall

Intersection of Battlefield Road and Glenstone Avenue
2825 S. Glenstone Ave.
(417) 883-7777

www.simon.com

Battlefield Mall is southwest Missouri's largest shopping center, offering more than 150 specialty stores and restaurants including Dillard's, Macy's, JCPenney and Sears. Visit Simon Guest Services located in the JCPenney East Court for Simon Giftcards and general mall information.

(SE) Brown Derby Stores Inc. International Wine Center

2023 S. Glenstone Ave.
(417) 881-1215

www.brownderby.com

Primarily known for a world-class wine selection unmatched in the Midwest, the store offers much more than great wines and spirits: a deli with a wide assortment of meats and cheeses, a humidor featuring quality cigars, a collection of Riedel crystal, unique gift items and more.



(N) Crystal Cave

7225 E. Crystal Cave Ln.
(417) 833-9599

Enjoy the beauty of Crystal Cave as you walk along natural paths. Handrails and stone steps guide you along to see the Upside Down Well, Rainbow Falls, the Cathedral and symbols that indicate Native American habitation. Guided 90-minute tour. A Greene County Historic Site. Located 5 miles north of I-44 on Greene County H Exit 80B.

(NW) Dickerson Park Zoo

1401 W. Norton Rd.
(417) 864-1800

www.dickersonparkzoo.org

Up-close natural adventure with hundreds of animals. Newest features include "Tropical Asia" with elephants, tigers and gibbons. "Missouri Habitats" features native species—gray wolves, mountain lions, river otters and more. Reptiles in the Ambler Diversity of Life Building. Children's playground and water feature. Café gift shop and train ride (seasonal).

(C) Discovery Center

438 E. Saint Louis St.
(417) 862-9910

www.discoverycenter.org

Discovery Center is an interactive hands-on science center for all ages. Imagine, create, have fun and learn with hundreds of exhibits that explore physics, chemistry, energy, health and culture all in an environmentally-friendly building, first southwest Missouri LEED Gold Certified. Explore galleries and exhibits such as HighWire Bike, BodyWorks, Discovery Town and Energy Exchange.

(NW) Fantastic Caverns

4872 N. FR 125 (I-44 and Missouri 13 North)
(417) 833-2010

www.fantasticcaverns.com

America's Only Ride-Through Cave. A 55-minute guided tour follows an ancient underground riverbed filled with massive formations. The cave stays a comfortable 60° year-round. ►

(SW) Grizzly Industrial, Inc.
1815 W. Battlefield Rd.
(417) 887-9191 • 800-523-4777
www.grizzly.com

Don't miss this great Springfield attraction! Grizzly Industrial's huge showroom features top-quality woodworking and metalworking tools and name-brand accessories, all at unbeatable prices! Whether you're a hobbyist or professional craftsman, we have something for everyone. See live demonstrations and pick up your free mail order catalog!

(C) Jefferson Avenue Footbridge (circa 1902)
Commercial Street at Jefferson Avenue
(417) 864-7015
www.itsalldowntown.com/cstreet

At 562 feet, this century-old footbridge is the country's longest! Completely restored by the City for \$750,000 just in time for its 2002 centennial, train watching from her sturdy decking continues to attract sightseers from all over the world. Double decker trains glide by on 13 sets of tracks below. Lit at night, locals refer to it as Springfield's largest (and coolest) public art sculpture.

(C) Juanita K. Hammons Hall for the Performing Arts
Missouri State University
525 S. John Q. Hammons Prkwy.
(417) 836-7678
www.HammonsHall.com

Enjoy the Broadway series and other national touring performances in one of the Midwest's finest entertainment venues.

(SE) Missouri Sports Hall of Fame
3861 E. Stan Musial Dr.
(417) 889-3100
www.mosportshalloffame.com

The Missouri Sports Hall of Fame is a fun, family-friendly environment. The museum includes more than 4,000 sports memorabilia, hands-on exhibits and interesting displays. Come and have a Ball at the Hall.

(N) OOVVDA Winery
5448 N. Berry Ln.
(417) 833-4896
www.oovvda.com

Meet the winemaker! Our classic and unique wines are crafted only from the finest fruits. Experience the fruit!

Ozark Greenways
(417) 864-2015
www.ozarkgreenways.org

(SE) PFI Town (PFI, Saddle City and Diamond Ridge Market)
2816 S. Ingram Mill Rd.
(417) 889-2668
www.pfiwestern.com

With 60,000 square feet of shopping, PFI Town, Missouri's largest western store, features more than 15,000 pairs of cowboy boots. Plus Saddle City with more than 500 saddles in-stock and Diamond Ridge Market with more than 120 different cheeses, 400 varieties of wine, with wine and cheese sampling daily.

Route 66
www.missouri66.org

Officially recognized as the birthplace of Route 66, it was in Springfield on April 30, 1926, that officials first proposed the name of the new Chicago-to-Los Angeles highway. In 1938, Route 66 became the first completely paved transcontinental highway in America—the "Mother Road"—stretching from the Great Lakes to the Pacific Coast.

Traces of the Mother Road are still visible in downtown Springfield and on the city's north side. Travelers still see traces of

history along the famous thoroughfare. In some areas, early gas stations and cafés are still in operation, sitting alongside antique stores and flea markets.

(SE) Springfield Conservation Nature Center
4600 S. Chrisman Ave.
(417) 888-4237
www.mdc.mo.gov/2360

The Springfield Conservation Nature Center provides free conservation educational activities for all ages. Indoors, enjoy nature exhibits, attend programs, purchase hunting and fishing permits, browse through a nature-related gift shop, and pick up free conservation brochures. Outdoors, enjoy three miles of hiking trails through a variety of natural communities. Call for events information.

(SE) Springfield National Cemetery
1702 E. Seminole St.
(417) 881-9499

Heroes from all wars are buried in the Springfield National Cemetery, including a Revolutionary War soldier and hundreds of Civil War soldiers killed during the Battle of Pea Ridge, Battle of Wilson's Creek and the Battle of Springfield. Several special monuments have been erected in memoriam to fallen heroes, the earliest of which was erected in 1888 in memory of General

Nathaniel Lyon, who was killed at the Battle of Wilson's Creek.

Wild Animal Safari
124 Jungle Dr. • Strafford
(417) 859-5300
www.goanimalparadise.com

Have your camera ready as you embark on our two-part animal adventure! Experience up-close encounters with all sorts of animals!

(SW) Wilson's Creek National Battlefield
6424 W. FR 182 • Republic
(417) 732-2662

www.nps.gov/wicr/index.htm

Fought on August 10, 1861, the Battle of Wilson's Creek was a pivotal battle in Missouri and the second major battle of the Civil War. When the smoke cleared, more than 2,500 Union and Confederate soldiers were killed, wounded or missing in five hours of intense fighting. The visitor center features a new 27-minute film, a museum and changing exhibits. A five-mile self-guided tour road allows visitors to explore the battlefield at their own pace. Walking trails lead to various battle sites, including Bloody Hill, the Historic John Ray House and the Edwards Cabin. ■



Contacting Your Student

Missouri State University
901 S. National Ave.
Springfield, MO 65897

Blair-Shannon House
1001 E. Madison St. - Blair Room
OR Shannon Room #
Springfield, MO 65807

Freudenberger (Freddy) House
1000 E. Madison St. - Room #
Springfield, MO 65807

Hammons House
1001 E. Harrison St. – Room #
Springfield, MO 65807

Hutchens House
1021 E. Harrison St. – Room#
Springfield, MO 65807

Kentwood Hall
700 E. Saint Louis St. - Room #
Springfield, MO 65806-2496

Scholars House
1116 E. Cherry St. - Room #
Springfield, MO 65807

Sunvilla Tower
833 E. Elm St. - Apt. #
Springfield, MO 65806-2431

Wells House
1132 E. Madison St. - Room #
Springfield, MO 65807

Woods House
1115 E. Monroe St. - Room #
Springfield, MO 65807

RESIDENCE HALL PHONE NUMBERS



Main Office
(417) 836-5536

Blair-Shannon House
(417) 836-5196

Freudenberger House
(417) 836-5189

Hammons House
(417) 836-4907

Hutchens House
(417) 836-8484

Kentwood Hall
(417) 836-4818

Scholars House
(417) 836-8787

Sunvilla Tower
(417) 836-5410

Wells House
(417) 836-5193

Woods House
(417) 836-5338

Important Dates

Fall Semester 2011

August 22	Fall 2011 Classes Begin
August 23	Last Day-Drop First Block Classes at 100% Credit/Refund
September 5	Labor Day Holiday
October 11	First Block Classes End
October 12	Mid-Semester/First Block Final Exams
October 13 - 16	Fall Break
October 17	Second Block Classes Begin
November 23 - 27	Thanksgiving Holiday
December 8	Last Day of Classes
December 9	Study Day - No Classes
December 10 - 15	Final Exam Period
December 16	Fall Commencement

Winter Intersession 2012

January 9	Winter Intersession Classes Begin
January 13	Winter Intersession Classes End

Spring Semester 2012

January 16	Martin Luther King Jr. Holiday
January 17	Spring 2012 Classes Begin
February 20	Presidents' Day Holiday
March 8	First Block Classes End
March 9	Mid-Semester
March 12	Second Block Classes Begin
March 17 - 25	Spring Break
April 5 - 8	Spring Holiday
Mar 10	Last Day of Classes
May 11	Study Day - No Classes
May 12 - 17	Final Exam Period
May 18	Spring Commencement

Summer Semester 2012

June 11	Summer Semester Begins
July 4	Independence Day Observed
July 5	Last Day of Session 3 Classes/Final Exams
July 9	Session 4 Classes Begin
July 12	Session 2 Classes Period Ends/Final Exams
August 1	Last Day of Sessions 1 & 4 Classes
August 2 - 3	Final Exam Period for Sessions 1 & 4
August 3	Summer Commencement

Recommended Reading for Parents/Families

“You’re on Your Own (But I’m Here if You Need Me): Mentoring Your Child During the College Years” by **Marjorie Savage**

“When Your Kid Goes to College: A Parent’s Survival Guide” by **Carol Barkin**

“Let the Journey Begin: A Parent’s Monthly Guide to the College Experience” by **Jacqueline Kiernan MacKay and Wanda S. Ingram**

“The Scholarship Book: The Complete Guide to Private Sector Scholarships, Fellowships, Grants, and Loans for the Undergraduate Student” by **Daniel J. Cassidy**

“College of the Overwhelmed: The Campus Mental Health Crisis and What to Do About It” by **Richard Kadison and Theresa Foy DiGeronimo**

“College Knowledge: The A+ Guide to Early College Planning” by **Regina Helene Muster**

“College Admissions Together - It Takes A Family” by **Steven Roy Goodman and Andrea Leiman**

“Financial Aid for the Utterly Confused” by **Anthony J. Bellia**

“Don’t Tell Me What to Do, Just Send Money” by **Helen E. Johnson**

“Letting Go” by **Karen Levin Coburn**

“Words to Live By: A Journal of Wisdom for Someone You Love” by **Emily & Kate Marshall**

“25 Ways to Make College Pay Off (Advice for Anxious Parents from a Professor Who’s Seen It All)” by **Bill Coplin, Ph.D.** ■



Terms to know

Boomer’s Crew

Boomer, Buster, and Growl—the mascots you will see at sporting events and other University sponsored activities.

Bursar

Office in Carrington Hall that acts as the cashier for the university; accepts cash, personal checks, money orders, cashier’s checks, traveler’s checks, and most major credit cards.

Carillon

A collection of 48 bronze bells located in a 140 foot tower attached to the Meyer Library. These bells can be heard through campus.

CLEP (College Level Examinations Program)

Allows students to receive credit by examination instead of course enrollment. For more information, contact the Counseling and Testing Center in Carrington Hall 311 at (417) 836-5116.

Convocation

The official ceremony designed to welcome new students to the University. It is held the Sunday afternoon before classes begin.

Course Catalog

Contains information about every college, department, major, and course located within the University. It also offers general information about the university, and its policies, programs, offices, and services.

Curricular Learning Communities

Two or more classes that are linked together. Incoming freshmen students enroll and participate in these courses with the same group of students.

Deferred Payment

The option to charge items from the University Bookstore, Taylor Health and Wellness Center, BearHouse Entertainment, Bear Necessities, It’s a Greek Thing, Paw Prints, and ETC. This option allows the convenience of paying for items on the same bill as student’s required student fees.

Dual Enrollment

Refers to high school students who are receiving both high school and college credit while enrolled in a college course.

Hold

A block which prohibits students from functions such as registering for courses or receiving a transcript or diploma.

Hall Director

Full-time staff members who manage the daily operations of the residence halls.

JQH Arena

Named after John Q. Hammons, the arena where the Missouri State Bears and Lady Bears play basketball; concerts and other community events are often held here. Live Account (Outlook)
The student e-mail system on campus.

Meal Plan

Students living in the residence halls may choose meal plans that offer 10, 14, 19, or unlimited number of meals per week in the dining centers.

My.MissouriState

Portal for student information and records; only accessible by students.

Partners in Education (PIE)

A program is designed to facilitate communication between first-year students and their families. If your student chooses to complete the PIE form located in the SOAR student handbook, the “partner” indicated on their form will have increased access to the student’s information for the student’s first year.

Plus/Minus Grading

Grading system approved in 2008 that gives instructors the option of grading their classes on a plus/minus scale (A, A-, B+, B-, C+, C-, D+, D, F).

Prerequisite

Specific requirements that must be completed prior to enrolling in a given class, program, or field of study. Prerequisites often apply to the completion of other courses. ▶

Provost

The chief academic officer of the University. The Provost is responsible for providing primary administrative leadership, direction, and evaluation for all academic activities and faculty affairs of the University.

PSU

Abbreviation used for the Robert W. Plaster Student Union.

Recruitment

The term used to describe the mutual selection process for joining a fraternity or sorority.

Residence Hall

The term used for “dorm.” Residence halls offer a community environment for the students to live, learn, and grow, rather than just a place to sleep at night.

Residence Assistant (RA)

Trained student leaders who live on each residence hall’s floor and wing and are selected because of their desire and ability to be of service to other students.

RHA

Residence Hall Association serves as the student voice in the residence halls. The RHA General Assembly is comprised of student leaders from each residence hall.

SAC

Student Activities Council is a student-run organization responsible for providing quality programs for a diverse student body throughout the entire year.

Service-Learning

A type of experiential education that combines and pursues both academic achievement and community service in a seamless weave, requiring the use of effective reflection exercises.

SGA

Student Government Association is the official voice of the student body at Missouri State.

SOAR

The Student Orientation, Advisement, and Registration program, which is committed to helping new Missouri State University students and their families make successful transitions to university life.

Suitemates

Some residence halls on campus offer suite-style rooms where 4-6 people share a suite with multiple bedrooms. The students who live in the same bedroom are considered roommates, while the students who stay in the other bedroom(s) would be considered suitemates.

Supplemental Instruction (SI)

A series of optional review sessions for students taking historically difficult courses. SI is provided for all students who want to improve their understanding of course material and improve their grades.

Syllabus

A document provided by a course instructor that outlines the instructor’s contact information, required material, information about what the course will cover, attendance policy, available dates, grading procedures, and important dates and deadlines for tests, papers, and projects.

The Pride

Missouri State’s 300 member marching band.

The Standard

The official student-run newspaper of Missouri State University.

Withdrawal

Dropping all courses at Missouri State University. To withdraw, students must submit a written request to the Office of the Registrar, Carrington Hall 302.

XF

Letter grade assigned to students who commit academic dishonesty or cheating.

ZipCard

Student photo ID cards. They can be used as a meal card for a meal plan or BearFare, deferment for goods to the student’s account, and a library card. ZipCards also have a debit function which uses money from a prepaid balance.

I Wish My Family Had Known . . .

- . . . That just because I went to college doesn’t mean I am any less a part of my family.
- . . . They raised a strong and confident young man/woman that is capable of a lot more than they realize.
- . . . The importance of memory foam.
- . . . How accepted I would be here and how many new friends I would make.
- . . . How welcome they would be to visit me anytime they want.
- . . . How much I would miss them.
- . . . That I wasn’t going to get a 4.0 like I did in high school.
- . . . That packages, mail, and visitors are my favorite things.
- . . . How busy college can be at times.
- . . . How to give me my space to grow at school.
- . . . The stereotypes on TV are not true.
- . . . How many fun things there are to do in Springfield that apply to them. ■



This Guide brought to you by these

Proud Supporters of MSU

ACCOMMODATIONS

Motel 6
Please see ad on p. 8.

Drury Inn and Suites Springfield
Please see ad on p. 10.

Best Western
Please see ad on Back Cover.

BANKING & FINANCIAL SERVICES

Campus Dough
Please see ad on facing page.

HEALTH CARE SERVICES

Cox Health
Please see ad on p. 16.

SHOPPING & SERVICES

Apricot Lane Boutique
Please see ad on p. 22.

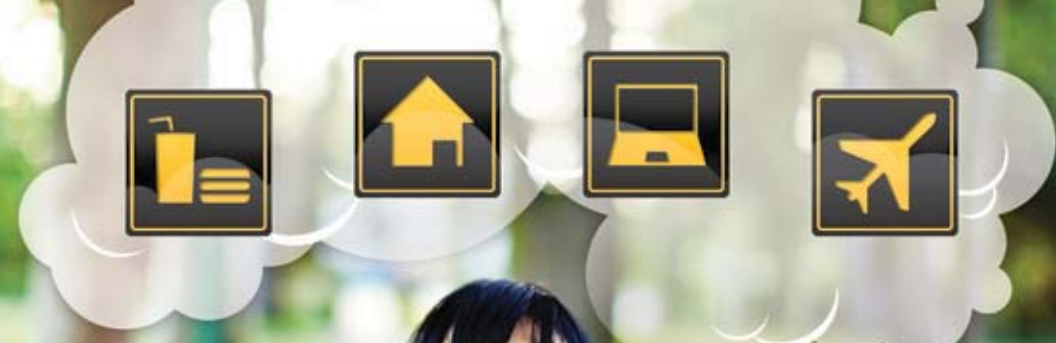
Missouri State Bookstore
Please see ad on p. Inside Front Cover.

Dell
Please see ad on p. 25.

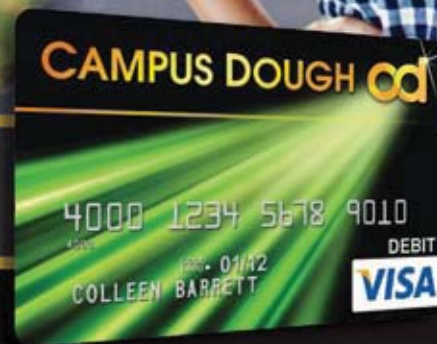
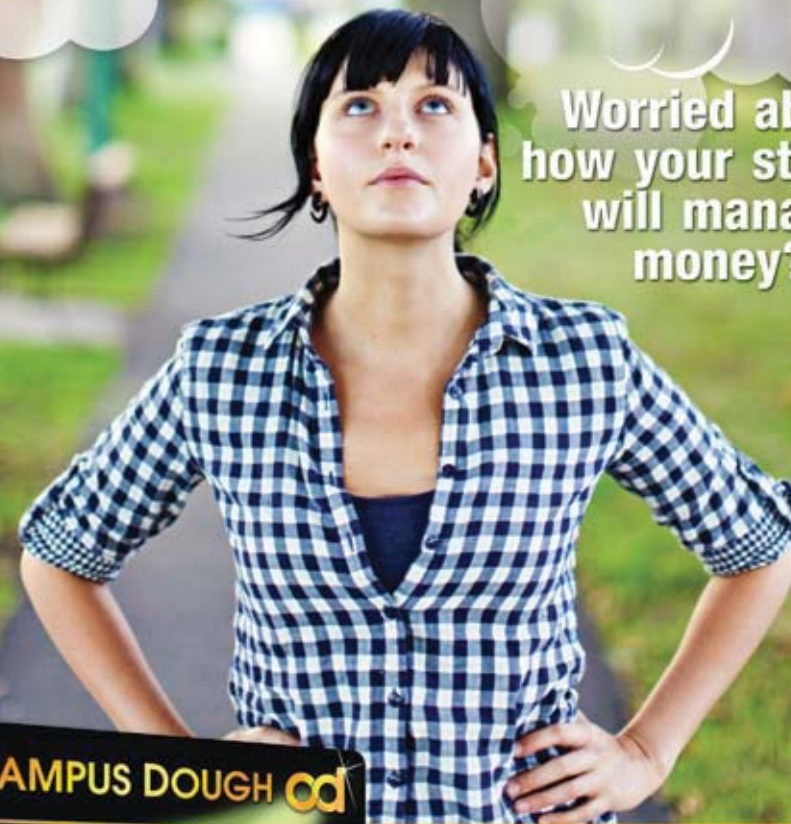


For advertising inquiries, please contact UPM Sales Consultant
Rebecca Boozan at (866) 721-1357 or email: ask@universityparent.com

www.universityparent.com/missouristate



Worried about
how your student
will manage
money?



Check out the
CAMPUS DOUGH CARD!

The Best Way for Students to
Manage & Save Money.

www.campusdough.com



The Campus Dough DebitSmart Visa® Prepaid Card is issued by MetaBank™ pursuant to a license from Visa U.S.A. Inc. The USA PATRIOT Act is a Federal law that requires all financial institutions to obtain, verify, and record information that identifies each person who opens an account. You will be asked to provide your name, address, date of birth, and other information that will allow us to identify you. You may also be asked to provide documentation as proof of identification. *100% approval guaranteed* and *Everyone Qualifies* is contingent upon successfully passing the mandatory identification confirmation.



What's better?...

The special price for MSU parents, the comfort of our rooms, or the fact that we're the closest (less than a mile) Best Western to the campus?

Maybe it's the taste of our cookies!



MSU RATE
Standard Rate \$71⁹⁹
Family Suite \$89⁹⁹



Bunk beds for children in the family suites



Free breakfast in traditional diner style.

- Newly refurbished rooms
- Family suites available
- Suites & Theme rooms
- Free deluxe breakfast
- Outdoor pool
- Children under 18 stay free
- Free Wi-Fi/Internet connections
- Free cookie
- Close to college sport, Cardinals & more!

800-304-0021 or 417-866-1963

bwrailhaven.com

*Discount offer may not be used in conjunction with any other offer.
Each Best Western Hotel is independently owned and operated.

It's everything at...



**Route 66
Rail Haven**

203 S. Glenstone
Springfield, MO 65802