

PARENT & FAMILY
GUIDE



2011
2012

**Philadelphia Biblical
University**

CAMPUS RESOURCES – LOCAL INSIGHT – HELPFUL INFORMATION



University Parent Media
3800 Arapahoe Avenue, Suite 210
Boulder, CO 80303
Phone: (866) 721-1357
Email: ask@universityparent.com

PUBLISHER
Sarah Schupp

VP OF OPERATIONS
Jon Saints

SALES REPRESENTATIVES
Allison Black
Rebecca Boozan
Daniel Condon
Scott Griesser
Sharon Haddad
Kelsey Hudspeth
Jon Hydeman
Mimi Olin
Emily Rayes
AJ Virostek

PRODUCTION DEPARTMENT
Grace Cassara
Mike Gooley
Eric Hosmer
Lee Riley
Meg Steinborn

OFFICE MANAGER
Linsey Straugh

DESIGNER
Jo Scoville

FOLLOW US ON:
 facebook.com/collegeparents

 twitter.com/4collegeparents



The presence of Philadelphia Biblical University logos and marks in this Guide does not mean the school endorses the products or services offered by advertisers in this Guide.

Advertising Inquiries:
(866) 721-1357
ads@universityparent.com

©2011 University Parent Magazines, Inc.



Philadelphia Biblical University
200 Manor Avenue
(800) 366.0049
www.pbu.edu

About Our Guides

University Parent Media works closely with institutions around the country to bring together the most relevant, timely information into one all-inclusive resource.

We have published this guide with the mission of helping you easily navigate the university and its surrounding community. Ultimately, we hope these resources help nurture your connection and involvement in your student's college years!

Make the Most of Your Parent Guide

- Hang on to your Guide! Inside you'll find information that's useful all-year long, including important phone numbers, web sites and calendars.
- Store your copy in a purse or glove compartment for convenient reference.
- Pass it along to parents of prospective college students to promote the school.
- Please recycle when finished!
- Discover more content, tips and local business information by visiting us online at: www.universityparent.com/pbu



contents



4 | PBU Guide

Comprehensive advice, information for campus success

- 4 | From the President
- 5 | About PBU
- 6 | Pointers for Parents
- 7 | PBU Mission Mural
- 8 | Resident Life
- 9 | 9 Useful Items to Pack
- 10 | PBU Graduate Programs
- 11 | Professional Graduate Degree Programs
- 12 | PBU Student Highlight
- 13 | PBU Services
- 16 | Campus Map
- 20 | Academics

24 | Philadelphia Community

Make the most of your visit by getting to know the area

- 24 | Welcome to Philadelphia!
- 26 | Things to do in Philly

28 | Resources

Must-have knowledge to navigate your way

- 28 | Important Numbers
- 29 | University Calendar
- 31 | Proud Supporters

From the President



Dear Parents,

Choosing a college is one of the most important life decisions your son or daughter will ever make. As President of Philadelphia Biblical University, I am delighted that PBU is their choice because here, students Walk a Different Path. It is my hope that their time here will challenge, inspire, and prepare them for a life that will make a difference in this world and in the lives of those around them. Our faculty and staff are deeply committed to Christ, the mission of the school, and one another. They will also be dedicated to your student as an important part of our institution.

PBU offers more than 50 academic programs as well as a broad range of spiritual and intellectual opportunities to help your student develop the skills, habits, and worldview necessary to live out their faith and succeed at their work. It will be a privilege to prepare your son or daughter to become a biblically minded, well-educated, professionally competent man or woman of character who desires to serve Christ in the church, society, and the world.

Sincerely,

Todd J. Williams, Ph.D., President ■

About PBU



Welcome to Philadelphia Biblical University!

At PBU, undergraduate and graduate students prepare for a variety of professional fields. Devoted faculty members teach students how the Bible is integrated in their studies and careers. Through demanding academic programs, PBU students have the unique opportunity to earn a B.S. in Bible in conjunction with a B.S. in Business or Education, Bachelor of Music, or Bachelor of Social Work.

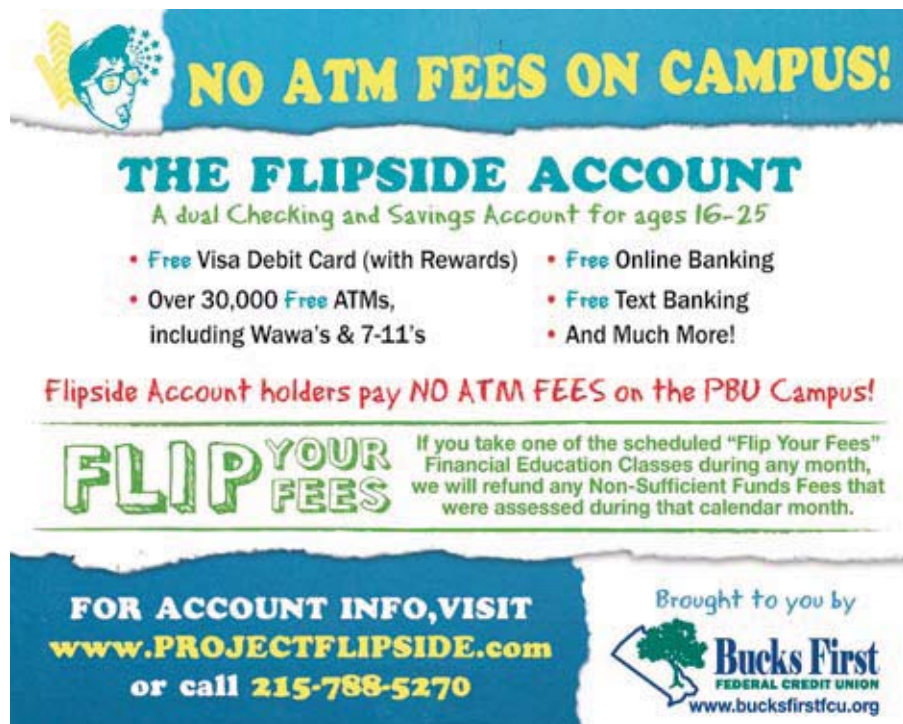
A PBU education is about more than just academics. It is preparation for life, including the cultivation of wisdom and strategic cultural engagement. It is learning what it means to integrate a biblical worldview into all aspects of academics, social life, and service. PBU will prepare your student to Walk a Different Path, one that will require much, but deliver more. Located in Bucks County, Pennsylvania, we provide students with both a suburban residence and convenient access to Center City Philadelphia. ■

Pointers for Parents

Sending your child off to college isn't easy. We want you to know that we're here to answer your questions and assist you with any aspect of the college selection process.

Why? Because behind great students are extraordinary parents. We are thrilled that PBU will be your child's home away from home.

At Philadelphia Biblical University, your child can expect to work hard, be challenged, and grow both academically and spiritually. Faculty and staff members invest in the lives of each and every one of our students. We often hear students say that their professors become life-long mentors. Why tell you all this? Because we want you to relax and rest assured that while your student is away at college, you won't need to worry. If you have questions about PBU or anything pertaining to university life for you and your student, never hesitate to call us. We're always here to help! For more information, visit www.pbu.edu/parents. ■



NO ATM FEES ON CAMPUS!

THE FLIPSIDE ACCOUNT
A dual Checking and Savings Account for ages 16-25

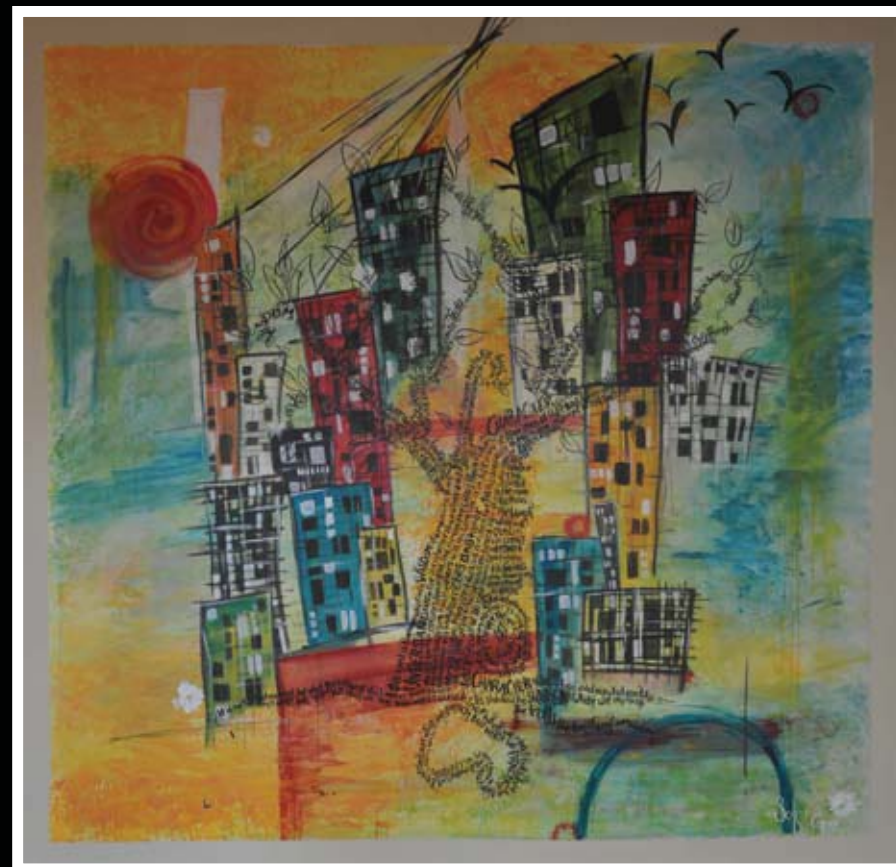
- Free Visa Debit Card (with Rewards)
- Free Online Banking
- Over 30,000 Free ATMs, including Wawa's & 7-11's
- Free Text Banking
- And Much More!

Flipside Account holders pay **NO ATM FEES** on the PBU Campus!

FLIP YOUR FEES If you take one of the scheduled "Flip Your Fees" Financial Education Classes during any month, we will refund any Non-Sufficient Funds Fees that were assessed during that calendar month.

FOR ACCOUNT INFO, VISIT
www.PROJECTFLIPSIDE.com
or call **215-788-5270**

Brought to you by
Bucks First
FEDERAL CREDIT UNION
www.bucksfirstfcu.org



PBU Mission Mural:

A collaboration between students and Dr. Todd J. Williams, President

"Philadelphia Biblical University exists to educate students to serve Christ in the church, society, and the world as biblically minded, well-educated, and professionally competent men and women of character."

To see the creation of this mural, visit www.youtube.com/RUN2PBU. ■

Resident Life

At PBU, students are not only campus residents, but members of our community and family. Living on campus allows students the opportunity to be close to and participate in the many social and athletic events held on campus—not to mention living only a step away from classes.



Each residential site provides students with wireless internet access and furniture, including a desk, twin bed with mattress, dresser, and laundry facilities. Most housing options also include private baths.

There are three different housing opportunities available to students.

Manor Campus is our only residence hall offering exclusively suite-style living accommodations. Situated at the heart of campus between academic buildings, the cafeteria, and the athletic facilities, Manor Campus is a diverse and vibrant community of students with instant access to all the campus has to offer. **Heritage Hall** is PBU's largest and newest residential location, located at the main entrance of the University.

Here, students will find a mix of suites and double-occupancy rooms tied together by a large and lively Great Room. PBU's **Penndel Apartments** are located less than one mile from campus and offer students an opportunity to reside in an engaging apartment-style community. Offering the most space and independence of the three residential sites, Penndel Apartments continue to be a popular living option for upperclassmen and non-traditional students.

To take a virtual tour and see photos of the residence halls, visit www.pbu.edu/life/housing. ■

Useful items to pack

- ❑ Office supplies, including notebooks, pens, stationery, and stamps
- ❑ Laundry supplies, including quarters for facilities
- ❑ Bulletin boards, whiteboards, dry erase markers
- ❑ Small tool kit and sewing kit
- ❑ Removable wall hanging products
- ❑ Shower caddy
- ❑ Waste basket
- ❑ Small refrigerator
- ❑ Camera
- ❑ Coffee maker and/or hot pot
- ❑ Flashlight

For more ideas, visit www.pbu.edu/studentlife



Philadelphia Biblical University Graduate Programs



It's no secret that in today's economy, advancing your degree is more important than ever.

You may be able to get a graduate education just about anywhere, but there is more to it than simply obtaining another degree. PBU is different, and we want to show you why.

Find out what makes a PBU graduate degree stand out among the rest. Learn more at www.pbu.edu/grad. ■

Professional Graduate Degree Programs:

- Master of Business Administration
- Master of Science in Organizational Leadership
- Master of Science in Education
- Master of Science in Educational Leadership and Administration
- Master of Science in Christian Counseling
- Master of Science in Bible
- Master of Divinity

Contact Information:
866.617.GRAD
graduate@pbu.edu ■



PBU Student Highlight: Meet Caleb



Dual-Degree Major: Bible and Secondary Social Studies Education
Hometown: Siloam Springs, Arkansas

Caleb is a senior at PBU in the School of Education. His first year, he studied the Bible at PBU's Wisconsin Wilderness Campus, a unique one-year learning environment where relationships, academics, and the outdoors combine in an accredited first-year experience.

"Hi, I'm Caleb. Through my time at WWC and PBU, I've learned what it means to have a biblical worldview. I don't need to compartmentalize my life. I don't just worship God when I'm singing worship songs. I can glorify Him by studying, playing baseball, or going rock climbing. My faith should be lived out in everything I do."

Learn more about the PBU experience first-hand through student and faculty blogs, including our President, Dr. Todd J. Williams, on the PBU blogsite: www.pbu.edu/blogs

PBU Services

PBU Masland Library

With more than 150,000 books and 40,000 e-books, the Masland Library provides students with all of the resources that they will need as they study at PBU. Students have access to a collection of online databases and electronic resources via the Library's website, www.library.pbu.edu. In addition to books and e-books, the Library also contains periodicals, DVDs, private study areas, two computer labs, a curriculum lab, and a writing lab.

Additional Academic Support Services

Instruction and coaching on topics such as organization and time management, effective note-taking, reading and test-taking strategies, and learning preferences is available to all PBU students through the Library.

Disability Services

The Academic Resource Center provides equal opportunities for access to academic programs and facilities for all students with classified and documented disabilities. Personal care is provided to the student through an individualized plan provided by dedicated PBU personnel.

Oasis Counseling Center

University students face many new and challenging experiences. The Oasis Counseling Center is a safe place where students can seek assistance in the challenging circumstances of university life. Oasis staff members provide professional guidance that is biblically centered, supportive of each student, and morally responsible before Christ. Our counselors strive to provide individual counseling and if appropriate small-group counseling. Services are confidential and free of cost to all PBU students.

University Health Center

PBU's University Health Center exists to advance the health of our students by providing primary health care, prevention-focused services, and learning experiences which develop health knowledge and practical skills. The Center is staffed by a registered nurse. Referrals for health care needs beyond the scope of practice for the Health Center are made to area doctors by the PBU nurse. ▶

The following are provided by the PBU Health Center:

- ▶ Seasonal flu vaccines
- ▶ Outpatient nurse care and first aid
- ▶ Over-the-counter medication
- ▶ Disease prevention information
- ▶ Health promotion
- ▶ Weight management information
- ▶ Nebulizer treatments
- ▶ PPD testing
- ▶ Fall and Spring blood drives

Contact information for departments and services is available on page 28.

John Milnik Doug Milnik

Bertrand's
AUTO

215-757-5589

REPAIR CENTER

137 E. LINCOLN HWY PENNDL, PA 19047

STATE INSPECTION, DIAGNOSTICS,
FACTORY MAINTENANCE, HIGH PERFORMANCE

7% OFF for all PBU Students & Staff



Join your student on campus for PBU's annual weekend for the entire University family. Highlights include an open pit chicken barbeque, alumni piano concert and Steinway Dedication, treasure hunt for kids, and much more!

Visit www.pbu.edu/homecoming for more information.

Career Center

The PBU Career Center assists students and alumni in career exploration and job hunt preparation. Our career services personnel can help your student plan for the future. Students are encouraged to visit the Career Center early during their time at PBU to learn about networking, internships, and field placement opportunities.

The Career Center staff is ready to assist your student in:

- ▶ Researching Graduate Programs
- ▶ Crafting a Resume and Cover Letter
- ▶ Building a Career Portfolio
- ▶ Developing Job Search Strategies

University Ministry Center

The University Ministry Center at PBU integrates a variety of distinct avenues of spiritual growth for the student body. We believe that education should incorporate intentional and committed Christian service to the surrounding community and abroad. Our goal is to parallel academics with student service initiatives and ministry. The Ministry Center includes the oversight and programming of chapel services, student ministry responsibilities, short-term mission trips, and volunteer ministry opportunities.

At PBU, your student will have an opportunity to travel abroad. Each year PBU plans short-term mission trips to a vast selection of countries. We have taken students to Greece, the Czech Republic, Hungary, France, Bosnia, South Africa, Canada, Kenya, the Philippines, Ireland, Nepal, the Dominican Republic, Poland, and Israel.

PBU Follett Bookstore

The PBU Bookstore provides students with access to products and services from our entire network of over 900 bookstores across the country. Students can purchase books both in the campus store and online. The bookstore is also the one-stop-shop for PBU clothing, gifts, school supplies, greeting cards, and more.

Bookstore Hours

- ▶ Monday/Tuesday/Thursday
10:00 a.m. to 6:00 p.m.
- ▶ Wednesday/Friday
10:00 a.m. to 5:00 p.m.
- ▶ Saturday
10:00 a.m. to 1:00 p.m.

Contact information for departments and services is available on page 28.

Campus Dining

Variety is important and that is what the Furman Dining Commons, run by Pioneer College Caterers, provides your student. Extensive service hours are offered in the dining commons to help ensure your student will never miss a meal because of class or work. Nutrition is essential to academic success and we are committed to providing our students with healthy choices, including hot and cold selections. For information regarding meal plan options and hours of operation, visit www.pbu.edu/life/dining.

Sample Menu

- ▶ Fresh-Cut Fruit Bar
- ▶ Made-to-Order Deli Bar
- ▶ 3 Hot Entrees (*lunch & dinner*)
- ▶ Carved Meat Selections
- ▶ Served Pasta Bar
(*gluten-free options available*)
- ▶ Soup and Salad Bar
- ▶ Rotating Demo Bars
- ▶ Pizza and Pasta Station
- ▶ Grilled Sandwiches, Gyros, and Stir-fry Stations
- ▶ Belgian Waffle Bar
- ▶ Weekly Monotony Breakers
- ▶ Monthly Specials
- ▶ ... and other Culinary Creations

Eagle's Nest Café

The Eagle's Nest Café is a coffee-house-style gathering place for students that provides coffee drinks, hot and cold beverages, and snack selections. The Eagle's Nest serves Starbucks coffee. Students may substitute Eagle's Nest meals for any 15 cafeteria meals each semester. For more information, visit www.pbu.edu/life/dining.

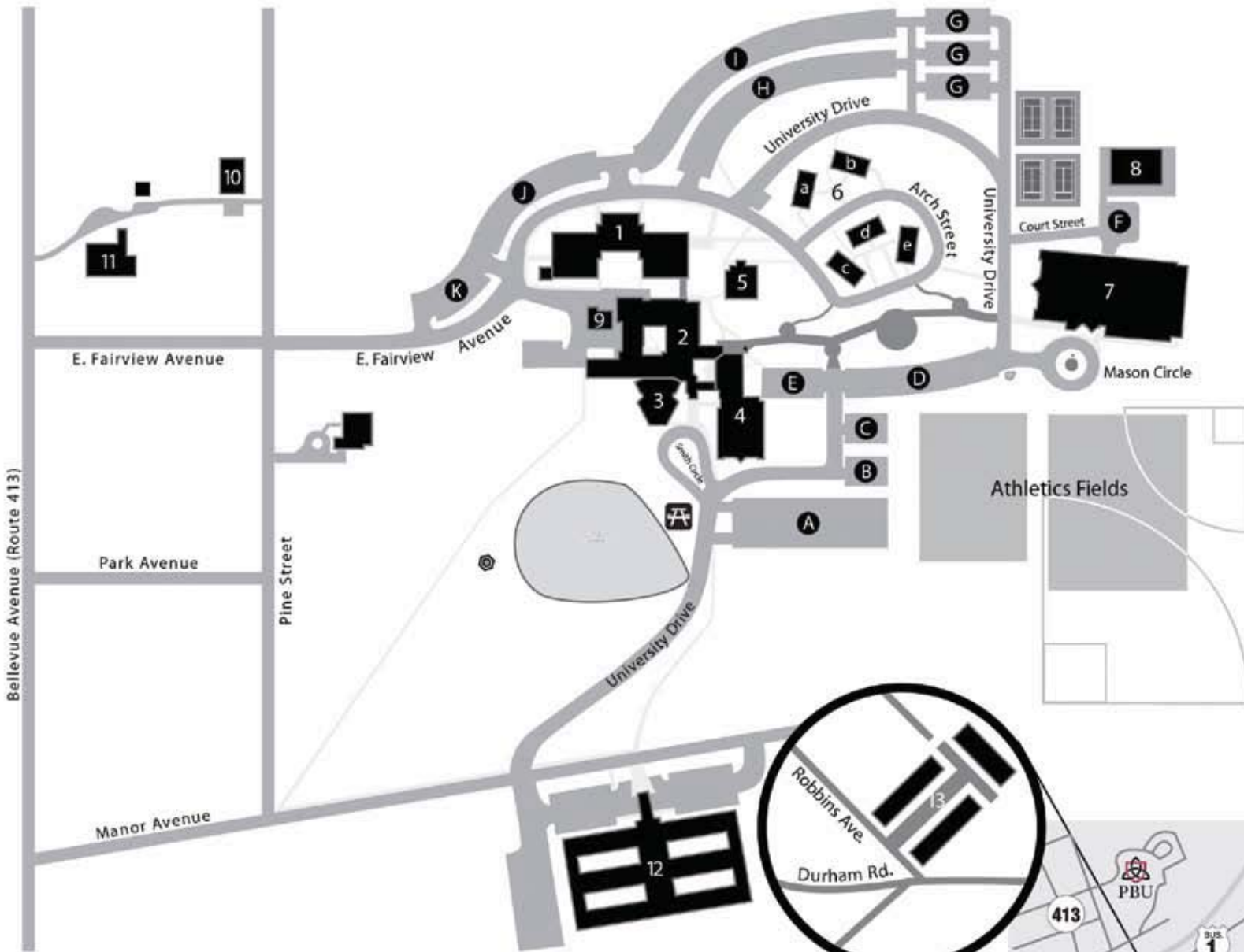
Financial Aid

The Financial Aid Office is available to serve you, answering all of your questions about scholarships, grants, student loans, and other financial aid opportunities.

- ▶ We encourage you to fill out the FAFSA as soon as possible after **January 1** of the calendar year in which your student plans to attend school and needs aid, and **preferably by our priority deadline of February 15**. Filing as soon as you can allows us to offer you the best possible financial aid award in a timely manner.
- ▶ Be sure to include PBU's school code, 003351, so we receive your student's financial information and are able to determine award eligibility. If an eight digit number is needed, please enter 003351-00.

Article continued on p. 18 ▶

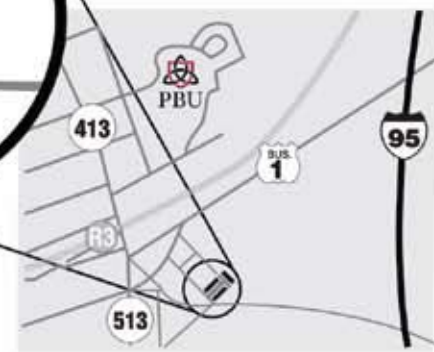
Contact information for departments and services is available on page 28.



Campus Map Key

- 1. Ellwood Cook Biblical Learning Center
 - 2. Smith Administration Building
(includes Admissions, Alumni and Commuter Lounge)
 - 3. Chatlos Chapel
 - 4. Masland Learning Resource Center
 - 5. Music Building
 - 6. Manor Campus
 - a. Souder Hall
 - b. Stillman Hall
 - c. Schofield Hall
 - d. Memorial Hall
 - e. Davis Hall
 - 7. Mason Activity Center
(includes Furman Dining Commons, gymnasium, fitness center, bookstore, Eagle's Nest Grill and Café)
 - 8. Maintenance Building
 - 9. Technology Services
 - 10. Safety and Security
 - 11. Fairview Manor
 - 12. Heritage Hall
 - 13. Penndel Apartments
- A – K** Parking

For a closer look at PBU's campus, visit www.pbu.edu/virtualtour.



Article continued from p. 15 ►

- PBU also provides work study and campus employment opportunities for eligible students.

Registrar's Office

The Registrar's Office provides a variety of information ranging from course schedules, class registration details, transcript requests, and commencement activities and requirements. Our goal is to serve our students in selecting courses and planning for upcoming semesters.

Academic Advising

An academic advisor is assigned to each student to assist with all academic decisions and invest in the educational success of your child. Each advisor is a faculty member from the program of study in which your student is enrolled. With the assistance of the academic advisor, students will select courses for each semester and be able to register online. For the first semester, academic advisors will register students for classes.

Business Services

The Business Services Office is available to help students and parents understand billing information, tuition, payment plans, and various financial aid options. Here are some important tips about managing your student's account information:

Privacy of Education Records

The Family Educational Rights and Privacy Act (FERPA) protects the privacy of student education records, including academic records, billing and financial aid information, and disciplinary actions. A main provision of the law states that universities are not permitted to disclose education records in most circumstances without written permission from the student, even to the student's parents. Students who want their parents to have access to their records may complete a "Waiver of Privacy of Education Records" form, which is available in the Registrar's Office. If you have questions about FERPA, please email registrar@pbu.edu.

- Each student is required to have health insurance. If your student is not part of your insurance plan, you may purchase the University's health insurance plan for your son or daughter.
- All billing information will be carried out with your student. In addition, most correspondence takes place through email, so be sure they are checking their PBU student account.
- You may make payments through check, credit card, or online by ACH. PBU account information is as follows:
 - Univest Bank**
 - Checking Account #: 0111997292**
 - ABA Routing #: 031913438**
- PBU provides payment plan options through TMS (Tuition Management Systems).
- PBU provides check cashing services, up to \$50.
- There are ATMs on campus for student use in the Bookstore and the Student Lounge.

Technology Services and Student Computing

Technology support services are available to all students for computing needs. Students may contact TS professionals any time of the day with

questions pertaining to computing needs, computer problems and issues, hardware support, and technology applications.

All PBU students are provided with an abundance of technology applications, including:

- Eagle Mail—Student email account
- Self-Service—Real-time access to academic and financial information including class registration, class schedules, and grade reports
- University Intranet—Community and Student Life information, including campus events, forms, policies, and more
- Internet Access—Open connection to the wireless network
- E-Learning—Online course management system
- Library Resources—24/7 access to the online library catalogue and database

Office of Safety and Security

The Office of Safety and Security (OSS) protects people and property, maintaining as safe a learning environment as possible. The security force is in operation 24 hours a day, every day of the year. The OSS also provides vehicle assistance, emergency information, "Safe Ride" and student shuttle services, crime prevention tips and presentations, as well as health and safety training.

The safety of our students is our number one priority. The Director of Safety and Security has over 17 years of experience in campus security, holds multiple criminal justice degrees, and a variety of certifications. In addition, PBU has an Emergency Response System in place in the event that any emergency should take place on campus.



Athletics — Fast Facts

- **Home Arena:** PBU's Mason Activity Center
- **Affiliations:** NCAA III, NCCAA II
- **Conference:** Colonial States Athletic Conference and Continental Volleyball Conference
- **Varsity Teams:** 12 (six men's, six women's)
- **PBU Mascot:** Crimson Eagle
- **PBU Colors:** Crimson, Black, and White

Men's Collegiate Sports

Baseball, Basketball, Cross Country, Golf, Soccer, and Volleyball

Women's Collegiate Sports

Basketball, Cross Country, Soccer, Softball, Tennis, and Volleyball

Intramural Sports

Basketball (men's and women's), Billiards, Flag Football, Indoor Soccer, Ping Pong, Ultimate Frisbee, Dodgeball, and Volleyball

Fitness Center

PBU recently renovated its Fitness Center to include new state-of-the-art strength and cardiovascular equipment. Located in the Mason Activity Center, the Fitness Center is open for student use. ■

Contact information for departments and services is available on page 28.

Contact information for departments and services is available on page 28.

Academics



At PBU, academic programs are inspiring because each one is intentionally designed to challenge students professionally, intellectually, personally, and spiritually.

The faculty and staff are committed to Christ and His Word, as well as to the mission and vision of the University. Faculty members are not only experienced and professionally qualified, they are also eager to personally invest in the lives of students.

With over 50 specialized academic programs, many students choose to major in Bible as well as a professional area of study. This unique opportunity allows students to graduate with two bachelor's degrees in four and a half years.

The School of Bible and Ministry

The integration of Bible and theology courses with liberal arts and professional studies is a clear distinctive of PBU. Every undergraduate student at PBU earns a B.S. in Bible degree. The biblical studies courses are designed by faculty to work together with the courses in arts and sciences and the professional programs. Faculty members are committed to strengthening students' faith and understanding of God's Word while building in them an increasing appreciation for and confidence in God and the Bible. Courses in the core not only provide students with a foundational understanding of the Bible, church history, and theology, but also help students learn how to bring biblical thinking to bear upon all facets of life.

The School of Education

The School of Education faculty teach both theoretical and practical aspects of teaching and learning. Programs provide students with thorough preparation and credentials for teaching in public, private, Christian, and international schools. A wide variety of subject areas,

grade levels, and specializations are available for students to choose from. Students will benefit from an approach committed to the highest degree of professional preparation and the thorough integration of a biblical worldview.

The School of Business and Leadership

The School of Business and Leadership is more than preparation for a career in the marketplace. Students receive an education that prepares them professionally and personally through the development of business skills, ethics, integrity, and character development. A biblical worldview is integrated in every subject, whether business communications, accounting, or organizational leadership.

The School of Music and Performing Arts

The School of Music and Performing Arts provides students with a high caliber of music education. Students benefit from a classically based, academically demanding, and artistically sound

study of music. As a result, they become music professionals in composition, performance, education, or the church. Ensembles and musical groups offer students the opportunity to be involved in the performing arts and contribute to campus life and the life of the surrounding community. ►



Meet PBU's Academic Deans and Chairs:
www.youtube.com/RUN2PBU



horizons, stretching each student's ability to think critically about all areas of life and learning. The Liberal Arts and General Studies programs offer preparation for graduate study in a variety of fields.

The Department of Social Work

The Department of Social Work prepares students to meet the needs of others by learning in community and focusing on the application of classroom learning in the field. The Department has an outstanding reputation among ministries, as well as private and public agencies. Students often continue their education to receive a Master of Social Work and licensure from highly respected schools around the country.

The School of Arts and Sciences

The School of Arts and Sciences faculty introduce students to the traditional subjects within the humanities, arts, and sciences but teach them in a way that expands intellectual and cultural

The Department of Christian Counseling

The Department of Christian Counseling provides the foundation for counseling



Welcome Philadelphia Biblical University students!
Buy select Dell PCs, get an Xbox 360® 4GB.*

Students only, get an Xbox 360® when you purchase select Dell PCs with Windows 7® for \$699.99 or more.*

NEW Dell™ Inspiron™ 14R
Enjoy a laptop that's light, mobile and ideal for your on-the-go lifestyle
\$699.99

- New 2nd gen Intel® Core™ i3 processor
- Genuine Windows™ 7 Home Premium
- 4GB Memory*; 500GB* Hard Drive

SWITCH by design studio
Black SWITCH lid comes standard. Optional SWITCH by Design Studio lids starting at **\$34.99**

Your student benefits:

- Best price guarantee* on Dell consumer PCs
- Up to 30% or more off select Dell consumer PCs
- 10% off Dell mobility products
- Free 3-5 day shipping on systems \$699 and above before taxes and fees*

*XBOX 360 \$499.99 system bundle offer only valid for actively enrolled high school, college, or university students or those purchasing on behalf of such students. Demonstration of eligibility is required and unverified orders may be canceled or rejected. No more than two bundles per household. Dell will only accept returns of the entire bundle. Abuse of student credentials will be investigated and may result in termination of the offer.

Shop now ▶ dell.com/dellu or 1-866-328-1898

Student exclusive. Use your member ID to order: US115573324



ministry or practice, emphasizing the development of personal, spiritual, intellectual, and interpersonal maturity necessary for counseling others. We also provide opportunities to apply what is learned in our own community counseling center. Faculty members are experienced practitioners, serving in both ministry and professional counseling practices.

Dual-level Degree Options

Students interested in earning both a bachelor's and master's degree at PBU can do so in a number of dual-level degree programs. Some dual-level degree programs require a secondary application after a few semesters of study. ■



Reflections by Ruth Photography

Bucks County Welcomes Parents & Students of Philadelphia Biblical University!

Tucked neatly within Philadelphia's Countryside amidst rolling hillsides, working farms and picturesque old-time towns, Bucks County is marked by a particularly inviting countryside. Visitors in search of historical delights, artistic treasures, charming accommodations, or eclectic shops will find that Bucks County offers it all. In fact, one in four Americans lives within 250 miles or less of Bucks County making it a viable getaway for many.

Throughout history, Bucks County has served as a stage upon

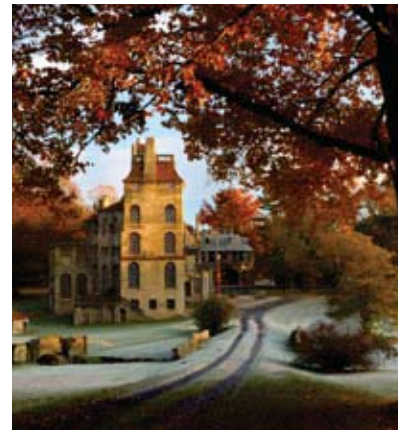
which some of the nation's most dramatic changes have played out. George Washington's Christmas Crossing, re-enacted each year on the Delaware River, changed the tide of the Revolutionary War. Ever since, Bucks County has played a pivotal role in American history and the very fabric of American culture. This legacy of change is balanced by the area's timeless appeal as a getaway from the hustle and bustle of daily life.

New Hope, a popular artist colony, offers small-town charm comfortably offset by casual sophistication. It is one of Bucks County's premiere

travel locations and is the home of such renowned artists Daniel Garber and Edward Redfield. Peppered with romantic bed & breakfasts, New Hope offers art galleries, antique shops and more than 30 fine restaurants.

The well-traveled town of Doylestown is home to the impressive belt of historical attractions comprised of Fonthill Museum, Mercer Museum, and Moravian Pottery & Tile Works. These castles tell the story of creative genius Henry Mercer by exhibiting his tiles, mosaics from around the world as well as furnishings and tools of early America. The James A. Michener Art Museum, once the Bucks County Prison, features art from 20th century America, sculptures and changing exhibitions.

Savor the day along Bucks County's Wine Trail, encompassing hundreds of acres of vineyards with beautiful views and fresh air scented with the bounty of grapes. Book a tour individually with each winery to get educated on the skills of wine-making and enjoy our award-winning wines or hop aboard the Tastings and Tours bus, our local winery tour guide.



Reflections by Ruth Photography



Anthony Sinagoga Photography

Shop 'til you Drop! Bucks County has much to offer shoppers with a flair for country style, crafts, antiques, and collectibles. Bucks County is home to Byers' Choice, the makers of the beloved Caroler figurines. Patrons are encouraged to visit the premises and watch the skilled artisans from an observation deck as they meticulously piece together Caroler figurines by hand. No shopping excursion can be complete without spending the day at Peddler's Village, an 18th-century style shopping village boasting more than 70 specialty shops, six restaurants and a luxury on-premise inn amidst 42 acres of beautifully landscaped gardens and brick walkways. ■

Interested in learning more about bucolic Bucks County?

Check out VisitBucksCounty.com

or "Like" us at Facebook.com/VisitBucksPA.



Anthony Sinagoga Photography

Have an Extra Hour or Two in Philly? Here Are Some Ideas:

History 101

While historians debate Betsy Ross' role in making the first American flag, the Betsy Ross House offers an excellent portrayal of a working-class woman's life in Colonial America.

- 239 Arch Street
- (215) 686-1252
- www.betsyrosshouse.org

Elfreth's Alley, the oldest continually inhabited street in America, features quaint brick homes that offer a postcard-perfect peek into the residential life of Colonial Philadelphia.

- (215) 574-0560
- www.elfrethsalley.org

Independence Hall, the birthplace of the United States of America, is one of only 20 World Heritage sites in the country. It is here that the Declaration

of Independence was signed and the U.S. Constitution was adopted. Admission is free, but tickets are required. Free day-of reservations and advance tickets (\$1.50) are available at the Independence Visitor Center.

- 5th & Chestnut Streets
- (215) 965-7676
- www.nps.gov/inde

The Liberty Bell Center showcases the famous cracked Bell against the backdrop of Independence Hall and puts it in its historical context. Throughout the center, larger-than life historic documents and graphics explore the facts and the myths surrounding the Bell.

- Market Street between 5th & 6th Streets
- (215) 965-7676
- www.nps.gov/inde

It's only four pages long, but the U.S. Constitution is among the most influential documents in the history of the world. The 160,000-square-foot National Constitution Center explores the Constitution through high-tech exhibitions, artifacts and displays.

- 525 Arch Street
- (215) 409-6700
- www.constitutioncenter.org

Shopping, Shopping and More Shopping:

With a wonderful mix of urban shopping districts, some of the nation's largest retail centers and tax-free shopping on clothing and shoes, Philadelphia's a good place to take a break from business and put your credit card to work. Some suggestions for indulging:

A former industrial district, Northern Liberties has been revived and reimagined as an artists' quarter, and a host of inventive shops make it one of the city's trendiest spot to indulge in the latest finds.

- Spring Garden Street to Girard Avenue between 2nd & 6th Streets
- www.northernliberties.org

Its former factories are now airy condominiums, and Old City is the province of the weekend party people and art collectors who gather in the neighborhood's many upscale restaurants, bars and galleries. You won't find chain stores here, but you will find plenty of owner-operated shops.

- Front Street to 5th Street between Chestnut & Race Streets
- www.oldcitydistrict.org

Pine Street's Antique Row is famous among shoppers for its unique stores offering antique furniture, books, crafts, collectibles and bits of local history.

Many new stores have opened on the street over the past couple of years, joining contemporary wares with the row's traditional merchandise.

- Pine Street between 9th & 12th Streets
- www.antique-row.org

Rittenhouse Row, the heart of Philadelphia's premier business, residential, shopping and cultural district, covers 24 blocks. The site of many couture boutiques, Rittenhouse Row is also home to Philadelphia-grown clothing and shoe boutiques.

- Between the Avenue of the Arts & 22nd Street from Market to Pine Streets
- www.rittenhouserow.org

South Street District has long been Philly's funkiest place to shop and stroll. Abundant with hip clothing and shoe boutiques and indie record shops, the street offers a wide range of shopping options.

- South Street between Front & 11th Streets
- (215) 413-3713
- www.southstreet.com

The University City shopping and dining area features a vibrant mix of retailers.

- 34th to 38th Streets and Chestnut to Walnut Streets
- (215) 222-5022
- www.ucityphila.org

Main Street in Manayunk is a National Historic District located between a quiet neighborhood and an old canal. Seven miles from Center City Philadelphia, the quaint outdoor strip is home to more than 70 chic boutiques and galleries.

- Main Street between Ridge Avenue & Green Street
- (215) 482-9565
- www.manayunk.com ■

Important Numbers

Department	Phone	Email
Admissions	(877) RUN 2PBU	admissions@pbu.edu
Alumni	(215) 702-4393	alumni@pbu.edu
Athletics	(215) 702-4405	athletics@pbu.edu
Business Services	(215) 702-4201	accounting@pbu.edu
Career Center	(215) 702-4422	career@pbu.edu
Financial Aid	(215) 702-4246	financial.aid@pbu.edu
Masland Library	(215) 702-4370	library@pbu.edu
Mailroom	(215) 702-4320	mailroom@pbu.edu
Milestone (Student Yearbook)	(215) 702-4409	milestone@pbu.edu
Oasis Counseling Center	(215) 702-4224	oasis@pbu.edu
Office of Safety and Security	(215) 702-4350	security@pbu.edu
PBU Follett Bookstore	(215) 702-4300	bookstore@pbu.edu
PBU Ticket Line	(215) 702-4351	tickets@pbu.edu
Pioneer College Caterers	(215) 702-4257	pioneer@pbu.edu
Registrar's Office	(215) 702-4293	registrar@pbu.edu
Resident Life	(215) 702-4217	studentlife@pbu.edu
Student Life	(215) 702-4213	studentlife@pbu.edu
Technology Services (TS)	(215) 702-4554	ts@pbu.edu
The Scroll (Student Newspaper)	(215) 702-4866	scroll@pbu.edu
University Health Center	(215) 702-4334	nurse@pbu.edu
University Ministry Center	(215) 702-4219	student.ministries@pbu.edu
Wisconsin Wilderness Campus	(715) 798-3525	wwc@pbu.edu

Dorilyn Terrace
A Kamson Community
THE LIFESTYLE YOU DESERVE

1 Bedroom from \$875-\$925
1st month free with 12 month lease or 5% discount
2 Bedroom from \$1150-\$1175
\$500 off first months rent with 12 month lease
Heating, Hot Water, Cooking Gas Included
Small Pets Accepted with Fee
Large Sized Apartment Homes
Air Conditioning

Controlled Access with Intercom Entry System
Modern Kitchen with Dishwasher Available
Swimming Pool & Picnic Area
Minutes from I-95 & PBU & Route 1!

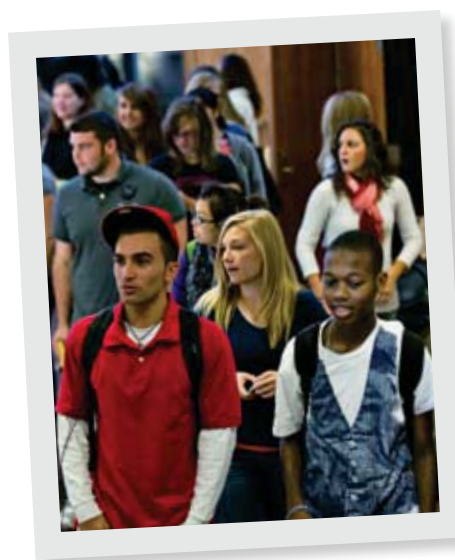


KAMSON CORPORATION
Communities For Better Living
*Our Residents Are Treated As VIP's
"Very Important People"*




10% OFF FOR BIBLICAL COLLEGE STUDENTS
215.943.1691
190 Bristol-Oxford Valley Road
Langhorne, PA 19047

University Calendar



Spring Semester 2012

- January 3-13 – J Term
- January 16-17 – Student Welcome and Orientation
- January 18 – First Day of Classes
- February 9-11 – Spring Musical
- February 11 – SIFE RIDE (Resume, Interview, Dress, and Etiquette) Seminar – Part 1
- February 20-24 – Global Mission Week
- February 25 – SIFE RIDE (Resume, Interview, Dress, and Etiquette) Seminar – Part 2
- March 3 – Church Music Celebration
- March 12-18 – Spring Break
- March 21 – Summer Web Registration Begins
- March 30 – Wind Ensemble Concert
- April 2 – Fall Web Registration Begins April 6-9 – Easter Break
- April 27 – Chamber Singers Concert
- May 4 – Last Day of Classes
- May 4 – Symphony Orchestra Concert with OYCA Winners
- May 7-11 – Final Exam Week
- May 12 – Spring Commencement

Fall Semester 2011

- August 25-28 – Weekend of Welcome, New Students
- August 29 – First Day of Classes
- September 30 - October 1 – Homecoming
- October 7 – Symphony Orchestra Concert
- October 17-18 – Fall Break
- October 26 – J Term Web Registration Begins
- October 29 – Agora 2011: Heart, Soul, and Mind
- October 31 – Spring Web Registration Begins November 4 – Opera Workshop
- November 11 – Wind Ensemble Concert
- November 16 – SIFE Career Fair
- November 17-19 – Fall Play Performances
- November 23-27 – Thanksgiving Break
- December 9 – Last Day of Classes
- December 9 – Christmas Concert
- December 12-16 – Final Exam Week
- December 17 – Fall Commencement
- December 17 – First Day of Semester Break

Fall Semester 2012

- August 23-26 – Weekend of Welcome, New Students ■



*For a complete listing of events and ticket information, visit www.pbu.edu/events.



This Guide brought to you by these
Proud Supporters of PBU

ACCOMMODATIONS

Bridgetown Mill House Inn
 Please see ad on p. 15.

BANKING & FINANCIAL SERVICES

Bucks First Federal Credit Union
 Please see ad on p. 6.

HOUSING

Dorilyn Terrace
 Please see ad on p. 28.

SHOPPING & SERVICES

Bertrand Auto Services
 Please see ad on p. 13.

Dell
 Please see ad on p. 22.

For advertising inquiries, please contact UPM Sales Consultant Scott Griesser at (866) 721-1357 or email: ask@universityparent.com



UNIVERSITY PARENT

Brings You

the Online



PBU

GUIDE



This online resource for parents
features the best places to

shop

eat

relax

stay

see

unwind

play

explore

visit

and more...

www.universityparent.com/pbu

Or find us with your mobile device!

Simply download a QR scanner app to your
mobile device and scan the QR code to the right!

