

UNIVERSITY PARENT
GUIDE



2011

**University of
Wisconsin-Parkside**

CAMPUS RESOURCES – LOCAL INSIGHT – HELPFUL INFORMATION

University Parent Media
3800 Arapahoe Avenue, Suite 210
Boulder, CO 80303
Phone: (866) 721-1357
Email: ask@universityparent.com

PUBLISHER
Sarah Schupp

VP OF OPERATIONS
Jon Saints

SALES REPRESENTATIVES
Rebecca Boozan
Mike Gooley
Scott Greisser
Sharon Haddad
Jon Hydeman

PRODUCTION DEPARTMENT
Grace Cassara
Eric Hosmer
Lee Riley
Meg Steinborn

OFFICE MANAGER
Linsey Straugh

UNIVERSITY & COLLEGE RELATIONS
Sarah Koontz

DESIGNER
Beth Skelley

FOLLOW US ON:

 facebook.com/collegeparents

 twitter.com/4collegeparents



The presence of University of Wisconsin-Parkside logos and marks in this Guide does not mean the school endorses the products or services offered by advertisers in this Guide.

Advertising Inquiries:
(866) 721-1357
ads@universityparent.com

©2011 University Parent Magazines, Inc.



contents

4 | UW-Parkside Guide

Comprehensive advice, information for campus success

- 4 | Welcome to University of Wisconsin-Parkside
- 5 | The Parent Transition
- 6 | Resources for Student Success
- 10 | Funding Your Education
- 11 | A Week in the Life of ...
- 12 | Discovering Life on Campus
- 16 | Campus Map
- 18 | Student ID
- 19 | About the University
- 20 | UW-P At-A-Glance

22 | Kenosha Area Community

Make the most of your visit by getting to know the area

- 22 | Welcome to the Kenosha Area!
- 24 | Kenosha Area Attractions
- 25 | Racine Area Attractions

27 | Resources

Must-have knowledge to navigate your way

- 27 | 2011-2012 Academic Calendar
- 28 | Important Phone Numbers
- 30 | Proud Supporters of UW-P



Family/Parent Program

900 Wood Road
P.O. Box 2000
Kenosha, WI 53141-2000
Phone: (262) 595-2300 | Fax: 262-595-2008
www.uwp.edu

About Our Guides

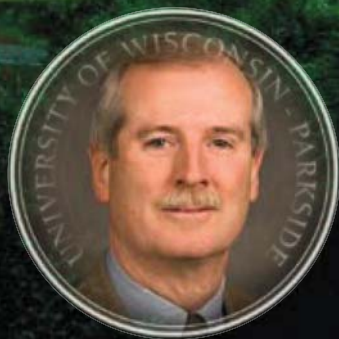
University Parent Media works closely with institutions around the country to bring together the most relevant, timely information into one all-inclusive resource.

We have published this guide with the mission of helping you easily navigate the university and its surrounding community. Ultimately, we hope these resources help nurture your connection and involvement in your student's college years!

Make the Most of Your Parent Guide

- Hang on to your Guide! Inside you'll find information that's useful all-year long, including important phone numbers, web sites and calendars.
- Store your copy in a purse or glove compartment for convenient reference.
- Pass it along to parents of prospective college students to promote the school.
- Please recycle when finished!
- Discover more content, tips and local business information by visiting us online at: www.universityparent.com/uwp

Welcome to the University of Wisconsin- Parkside



On behalf of the students, faculty and staff at the University of Wisconsin-Parkside, I would like to welcome you. As a parent or loved one of a UW-Parkside student you are now part of the “campus family.” It is important to know the university recognizes parents and loved ones as valuable members of the campus community. We also acknowledge that parents are a major contributor to the success of students as they pursue their educational goals.

You will find that a university is many things: a cluster of buildings, a center for research and scholarly pursuit, and a place where freedom of thought and expression are especially valued and protected. But there can be no university without students! There are a variety of people here

to assist your student. Our faculty care about students and want their learning experiences to be truly rewarding. Our student services staff is committed to helping students attend, remain, achieve and graduate. We are also fortunate to have students who care about one another and who are willing to listen, support and/or offer friendly advice to those experiencing problems of college life. Once again, welcome. We are glad you are here.

Sincerely,

Steve McLaughlin
Vice Chancellor for Student Services
& Dean of Students ■

The Parent Transition

Often we hear discussion of “student transition” from high school to college but seldom do we hear of “parent transition.” As a parent, have you given thought to what change might occur within your **family unit** as a result of someone “missing?” For each child who leaves home to attend college the **transition is different**; and the transition for the family or individual parent is different for each child.

What might be the relation, emotion or environmental changes? Not only for you as an individual, but for each individual – including “the one at college.” Will it change who shuttles the other kids, runs errands, make messes, cuts the grass or does the dishes? Will you now have a “guest room” or badly needed bedroom for the next in line? The list could go on and on as there are so many potential small changes in the transition process. For some, transition will occur easily and naturally; for others it will create pain and difficult times. While we cannot do away with the effects of transition in our lives, we can do much to determine how transition will affect our lives.

First, we can view transitions as a normal and desirable part of our lives and remember that we grow best with some disruption in our lives. Second, we can give ourselves and others permission to be affected (lonely, homesick, unsure, etc.) and be supportive, or seek support from others. Third, we can commit ourselves to being sensitive to what the other person is experiencing and provide understanding and support. Fourth, we can prepare for the transition to make it easier for everyone.

How do you prepare?

While you cannot totally prepare, you can have positive impact through one simple act: communication. Ask yourself what you most fear losing through a transition. Chances are good that for each person there is fear of isolation, loneliness, emptiness or loss of significance to others. All of these can typically be “made better” by one thing: talking. Think about making a firm commitment to talk as a family about transition, especially with those who might be experiencing difficulty. Transitions can be enjoyable growing experiences provided we make them so. ■



*Overlooking Lake Michigan
A great restaurant where families
can catch up while enjoying a
delicious dinner together!*

262-552-8008
www.thehobnob.com

Resources for Student Success

ADVISING AND CAREER SERVICES

Advising & Career Center

Wyllie Hall, D175

Advising: (262) 595-2040

Career: (262) 595-2452

Keyword: *advising*

Advising Services

The Advising & Career Center provides a variety of services to help students achieve their personal, academic and career goals at the University of Wisconsin-Parkside.

Academic advising is a key component of a successful undergraduate experience. Academic advisors assist students in developing meaningful educational, career and life plans that are compatible with students' interests and abilities. The Advising & Career Center promotes learning and intellectual development by facilitating students' ability to interact with and benefit from the academic curriculum. The focus is on undecided students, students seeking to change majors and students reassessing their current academic situation.

The Advising & Career Center can assist students with many things including but not limited to:

- ▶ Advise students through the process of exploring, choosing, declaring and /or changing a major or minor.
- ▶ Advise on course selection for the upcoming semester and future academic planning.

- ▶ Interpret university policy including dropping, adding or repeating courses.
- ▶ Identify options and provide guidance for students facing academic crisis situations.
- ▶ Assist and make referrals for students who need academic assistance, personal counseling, etc.
- ▶ Provide all first semester freshmen with midterm grade reports and intervene when necessary.

Career Services

The Advising & Career Center staff welcomes the opportunity to meet with students wherever they are in the career-development process. Students are aided in developing, evaluating and implementing career plans by individualized assistance and quality programs. The staff assists students as they prepare for interviews, internships, entering the workforce full time or continuing on to graduate school.

Other services available:

- ▶ Career Assessment
- ▶ Job Search Strategies
- ▶ Resume & Cover Letter Development
- ▶ Interview Skills
- ▶ RangerTrak: an online search tool for jobs (full/part-time), internships and volunteer opportunities. Jobs are available for both on and off-campus employment opportunities.



FIRST YEAR EXPERIENCE

Student Center, D105

(262) 595-2477

Keyword: *first year*

First-Year Experience (FYE) is designed to provide first-year students with tools necessary to succeed academically, socially, and make a smooth transition to university life. The First Year Experience program will teach students how to function effectively in a college environment through programs dedicated to promoting student development and successful completion of their first year at UW-Parkside.

Academic Success Workshops

FYE workshops are an opportunity for students to gain a better understanding of the skills necessary for college success. The workshops will address college transitional challenges and provide tools to better navigate college. The workshops are offered each semester and are available to all students. Topics covered include study strategies, budgets, stress management, majors and careers, test taking strategies, financial

aid, and leadership to name a few. Visit the FYE website for a complete listing of workshop offerings each semester.

Ranger Read Program

UW-Parkside is an institution that values Community Engagement, Diversity, and Inclusion! As an expression of these values, all incoming freshman have been asked to read a common book, and to participate in small group discussions during Ranger Welcome. All first year students are given a book as the introduction to academic rigor and collegiate level discussions. The purpose program is to orient new students to our UW-Parkside community by having a common reading experience with fellow classmates, faculty, staff, and upper-class students. The goal is to establish a greater sense of community among students and engage students in discussions that define the expectations of college as well as give students a head start on course material. Small group discussion with all first-year students will take place during Ranger Welcome Orientation and will be facilitated by faculty and instructional academic staff, with support from academic and classified staff members. ▶

DISABILITY SERVICES

Wyllie Hall, D175
(262) 595-2610

Keyword: *disability services*

The University of Wisconsin-Parkside is committed to high-quality educational programs, creative and scholarly activities, and services responsive to its diverse student population, and its local, national and global communities. To fulfill this mission, Disability Services recognizes that all persons who are

disabled are an integral part of our society. Further, it is our goal to effectively collaborate with students, instructors, staff and community members to create useable, equitable, inclusive, and sustainable learning environments.

The University of Wisconsin System and any of its agents shall not coerce, intimidate, retaliate against or discriminate against any individual for exercising a right under the ADA or Section 504, or for assisting or supporting another to exercise a right under the ADA or Section 504.

STUDENT HEALTH AND COUNSELING SERVICES

Student Health and
Counseling Center

(262) 595-2366

Keyword: *student health*

The Mission of the University of Wisconsin-Parkside Student Health and Counseling Center is to provide high quality care for the physical, emotional, and mental health care needs of students. This is accomplished by providing comprehensive intervention and preventive health education that influences positive life style choices. The staff works collaboratively with the university and surrounding community to promote holistic wellness, and believes that reinforced education and knowledge of preventive practices contributes to the achievement of academic and personal success. Health and Counseling Services are available to all registered students. Provider visits are free with minimal fees for testing or prescription medication. Services available but not limited to include:

- ▶ Evaluation and treatment of minor illnesses or injuries
- ▶ Physicals
- ▶ Dispensing of selected prescription and over the counter medication
- ▶ Rapid testing for strep throat, mono, pregnancy, HIV, and urinary infections
- ▶ Vaccinations
- ▶ TB skin testing
- ▶ Gynecological exams
- ▶ Contraceptives, Emergency Contraception and Condoms
- ▶ Full Lab services
- ▶ Testing for Sexually transmitted disease
- ▶ Loan and fitting of crutches or wheelchairs
- ▶ Allergy injections
- ▶ Health and wellness information and consultation
- ▶ Additional services, information, and fees can be found on our web page.

TUTORING SERVICES

Wyllie Hall, 107
(262) 595-2044

Keyword: *tutoring*

Tutoring Services (The Tutoring Center and The Ranger Writing Center) provides easily assessable academic support that promotes scholarly competency and success. The services promote personal responsibility and academic integrity within the mission of the University of Wisconsin-Parkside. Your student has the right to work with a tutor who:

- ▶ Treats them with respect.
 - ▶ Is patient.
 - ▶ Is familiar with material.
- ▶ Will practice confidentiality.
 - ▶ Will listen intently.
 - ▶ Will explain the information in the terms they understand.
 - ▶ Is not judgmental about ability levels.
 - ▶ Explains concepts, but does not do the work for them.
 - ▶ Provides positive encouragement.
 - ▶ Is trained in effective techniques.
 - ▶ Accepts individuals without personal judgments or comparisons with others.
 - ▶ Allows students to make final decisions regarding work and assignments. ■



Funding Your Education

Office of Scholarships & Financial Aid

Wyllie Hall, D191

(262) 595-2574

Keyword: *financial aid*

Cashier's Office

Wyllie Hall, D193

(262) 595-2258

Keyword: *cashier's office*

- ❑ 1. Apply for Financial Aid
- ❑ 2. Accept/Decline Award on SOLAR
- ❑ 3. Determine how much it will cost to attend UWP
 - ▶ Check the Office of Scholarships & Financial Aid page for a projected costs sheet
- ❑ 4. Activate Ranger Card and choose refund method
- ❑ 5. Determine how tuition/fees will be paid:
 - ▶ Financial Aid
 - ▶ Payment Plan
 - ▶ Parents (If parents are paying tuition, a 3rd party authorization should be filled out and signed by the student. Contact Cashier's Office.)

Tuition/Fee Balances

If Financial Aid does not cover the full tuition/fee balance, it is the student's responsibility to verify any outstanding balances owed on the SOLAR System and pay the difference by the tuition due date stated in the Fee Facts brochure or on the Cashier's Office website (www.uwp.edu keyword: *Cashier's Office*). Failure to pay by the tuition due date may result in the assessment of administrative late fees.

Disbursement Checks

Financial Aid is disbursed 10 days prior to the start of classes. Tuition and fees will be deducted from the Financial Aid. Funds will be available to the student through either:

- ▶ RangerOne account – 24 Hours after refund file is transmitted to Higher One
- ▶ ACH to Other Bank Account – 3 Business Days after refund file is transmitted

- ▶ Paper Check – 7-9 Business Days after refund file is transmitted

Payment may be made:

- ▶ In person with cash, check, or money order
- ▶ Using the drop slot next to the Cashier's Office WYLL D193
- ▶ Mail
- ▶ On the web (SOLAR system) using MasterCard, American Express, Discover, or e-check. A 2.5% convenience fee is charged when paying with a credit card; a \$3.00 fee is charge when paying with an e-check.
- ▶ Using an installment plan – Payment Plans are available through Tuition Management Systems. You can access their link at: www.afford.com/uwp or call (800) 356-8329. ■

A Week in the Life of ...

Are you concerned about how your son/daughter will manage time in college? Take a look at how the hours break down in the week of a typical college student:



- ✓ EVERYONE HAS SEVEN DAYS A WEEK, **24** HOURS A DAY FOR **168** hours EACH WEEK
- ✓ About **15** hours of class each week, plus two hours of study for each hour spent in class...**45** hours
- ✓ A good night's sleep is about seven hours...**49** hours
- ✓ Three hours each day may be spent for personal needs, such as eating, laundry, showering, banking, shopping...**21** hours
- ✓ A good exercise program – one hour per day...**7** hours
- ✓ A good social life: three events per week, four hours for each event. These could include a movie, sporting event, concert, dinner, whatever...**12** hours
- ✓ For those who choose to work, the average is...**15** hours
- ✓ That takes care of academic time, sleep, personal needs, exercise, and a social life totaling **149** hours each week.
- ✓ That leaves **19** hours each week to serve on a committee, run for student government, become an

active part of the residence hall council, participate in one or more of the **70** student organizations, or volunteer on campus or in the community. This time will help students to make friends and learn organizational and leadership skills, to accomplish goals, and to apply what they have learned in class. Encourage them to make their college years the TIME OF THEIR LIVES! ■

SEND YOUR STUDENT A GIFT FOR ANY OCCASION!



Whether it's their birthday, a congrats on a test, or a miss you, we have the perfect gifts to fit the event.

View gifts online at
www.uwpdining.com
or call us at
(262) 595-2346

sodexo

Discovering Life on Campus

Athletics

Sport and Activity Center
(262) 595-2245

Keyword: *athletics*

The athletic program provides intercollegiate competition in the National Collegiate Athletic Association (NCAA II) and is a member of the Great Lakes Valley Conference (GLVC), with member schools in Indiana, Illinois, Kentucky, Missouri, and Wisconsin. UW-Parkside offers athletic scholarships with recipients determined by the head coaches of the various sports. Varsity programs are offered in:

- ▶ Men's and Women's Basketball
- ▶ Men's and Women's Cross Country
- ▶ Men's and Women's Soccer
- ▶ Men's and Women's Indoor and Outdoor Track
- ▶ Men's Golf
- ▶ Women's Volleyball
- ▶ Men's Wrestling
- ▶ Women's Softball
- ▶ Men's Baseball



UW-Parkside also offers an intramural sports program including competition in softball, basketball, volleyball, flag football, disc golf, ping pong, indoor soccer, floor hockey and many others.

Living on Campus

Office of Residence Life
Ranger Hall
(262) 595-2320

Keyword: *housing*




Living on campus is a great way for students to experience college. They experience all the activities that take place long after class is done. They have built-in friends to share music, TV marathons or late night discussions. When it comes to studying, there are other students that are taking the same or similar classes. Choosing to live on campus may influence your student just as much as the major s/he picks.

What's so outstanding about living arrangements at UW-P? The choices! We offer three different options to suit your student's personality:

- ▶ Pike River Suites
- ▶ Ranger Hall
- ▶ University Apartments

Housing also offers options such as quiet and academic intensive, substance free and different living and learning communities. Visit the Residence Life web site to learn more about the options and take a virtual tour of each facility. ▶



 <p>University of Wisconsin PARKSIDE DINING</p> <p><i>Brickstone Grill & Eatery</i></p> <p>Eight exquisite dining stations are located at the Brickstone Grill & Eatery.</p> <p>Location: Student Center Hours: M-F 7am - 7pm Sat-Sun 11:30am - 1:30pm, 4pm - 7pm</p>	 <p>THE ENCORE</p> <p>ADDITIONAL DINING ON CAMPUS</p> <p>SUBWAY</p> <p>Location: Wyllie Hall M-Th 7:30am - 8:00pm Fri 7:30am - 2:00pm</p> <p>www.uwpdining.com (262) 595-2601</p> 
--	--

Discovering Life on Campus

University Activities

Student Center, L104
(262) 595-2278

Keyword: *university activities*

University Activities assists students in finding a variety of ways to get involved on campus. But what does it truly mean to “get involved?”

Simply put “getting involved” is defined as an activity, usually outside the classroom, which enhances and contributes to student learning. Involvement on campus can take on many forms; such as joining a student organization, fraternity or sorority, partaking in an internship, playing a sport or researching with faculty. While the primary reason for students to attend UW-Parkside is to obtain a good education, becoming involved in one or more of these activities provides invaluable tools and skills that will help make them successful in the “real world.” By participating in out-of-classroom involvements, students become more well-rounded individuals. They begin to develop essential skills such as leadership, time management, and networking. Additionally, by becoming involved on campus students begin to connect with the University and understand how valuable they are to the success of UW-Parkside.



How Can Your Student Make Connections?

- ▶ Get involved in student organizations
- ▶ Develop leadership skills through the Leadership Series
- ▶ Use those leadership skills to become a Student Leader
- ▶ Participate in events sponsored by Parkside Activities Board (better yet, become a member of PAB)
- ▶ Get involved in Student Government

- ▶ Get involved in your Residence Hall
- ▶ Become a Volunteer!

Gain knowledge, skills and experience in leadership, communication, problem-solving, group development and management, presentation and public speaking, and much more! So encourage your new student to Get Involved and watch what they can do!

Volunteer Opportunities

Wyllie Hall, D175
(262) 595-2011

Keyword: *volunteer center*

University of Wisconsin-Parkside students are given the opportunity to apply skills, interests, and academic learning to real-life experience through the UW-Parkside Volunteer Program. Contact the volunteer coordinator for more information. The Volunteer Program sponsors annual events such as Involvement Fair, Make a Difference Day, Into the Streets and Hunger Cleanup. ■

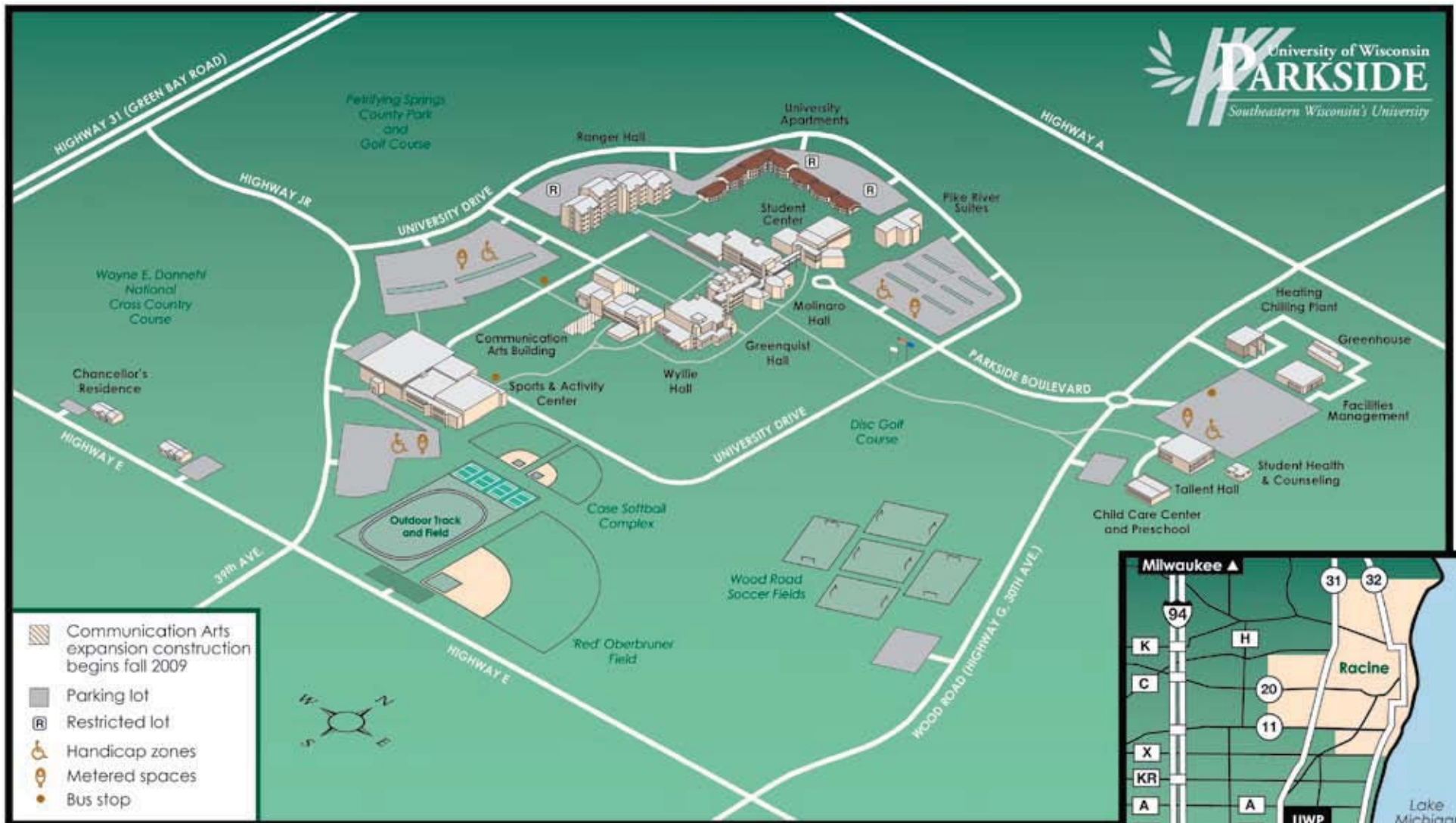


TREAT YOUR UWP STUDENT TO A GOOD MEAL AT A VARIETY OF RESTAURANTS IN RACINE COUNTY.

The entertainment district, Downtown Racine, has a diverse offerings of boutiques, galleries, theater, and nightlife. Spend some time with your family and have fun at North Beach, charter fishing, the Racine Art Museum, or the many bike paths. To help you during your visit, go to www.destinationracine.com to see a list of hotels, restaurants, stores, and activities in Racine County... just a few minutes north of UW-Parkside.

realracine

(800) 272-2463
www.destinationracine.com



GETTING TO CAMPUS:

From Milwaukee:

From Interstate 94, take County Highway KR to Highway 31/Green Bay Road, and south on Highway 31 to County Highway JR/Petrifying Springs Road.

From Chicago:

From Interstate 94, take State Highway 142 to Highway 31/Green Bay Road, and north on Highway 31 to County Highway JR/Petrifying Springs Road.

The University of Wisconsin-Parkside is located in the Town of Somers, Kenosha County, minutes from downtown Kenosha and downtown Racine.

From Highway 31:

From Highway 31/Green Bay Road, turn east on County Highway E and continue to County Highway JR/Petrifying Springs Road or Wood Road.

From Highway 32:

From Highway 32/Sheridan Road/Racine Street, turn west on County Highway E and continue to Wood Road or County Highway JR/Petrifying Springs Road.

By Local Bus:

Kenosha Transit serves the campus. For schedules and route information, call 262-653-4287. The UW-Parkside shuttle bus connects to Racine's Belle Urban System (BUS). For schedules check www.uwp.edu. Keyword: Police.



ROAD CLOSURES:

Due to I-94 construction, exit and entrance ramps at County Highway E are closed through fall 2009.

Student ID

RANGER CARD

Student Center, D104
(262) 595-2307
Keyword: *Ranger Card*



The Ranger Card is absolutely essential for every student. It is the key to accessing services throughout campus and is a vital link in receiving university refunds. Postponing a visit, risks delaying receipt of financial aid; not to mention access to your student's dining plan, residence hall and the Sports and Activity Center.

OBTAINING YOUR RANGER CARD

New students need to visit the Office of Admissions and New Student Services or the Cashier's Office after registration to have a photo taken (students attending Ranger Days will have taken it then). The card will arrive in about 7 days at the student's primary address via United States Postal Service (student's should make sure the primary address is correct).

ACTIVATING THE RANGER CARD

Upon receiving the card, make sure your student activates it! Visit us on the web at www.uwp.edu, keyword: *Ranger Card* and look for the activation link. Activation instructions are also provided with the card.

SELECTING YOUR UNIVERSITY REFUND PREFERENCE

IMPORTANT: When activating the Ranger Card your student will choose how to receive his/her financial aid change checks. Delaying activation will delay receipt of funds. There is an option to have your monies sent electronically to a bank account or open a Higher One Checking Account and choose an Easy refund. ■

Beautiful, Spacious & Inviting Apartments

A Standard of Excellence

**Beautiful & Spacious
2 Bedroom Apartments
1,000 Sq. Ft. Heat Included!
1707 Birch Rd. complex**

*Minutes from campus, near parks, shopping and bike trails.
Students ask for Trish Petretti.*

262-551-7255 • 1805 Birch Road, Kenosha • www.petrettiapartments.com

About the University

Commitment to Diversity

UW-Parkside's commitment to diversity is reflected in a curriculum that prepares students from both genders and all racial, national and ethnic groups to live in a pluralistic society. All undergraduates complete courses in cultural diversity as a graduation requirement. Programs are offered in Ethnic Studies, International Studies and Women's Studies. UW-Parkside ranks among the top UW System campuses in employing and enrolling people of color. It is a leader in employing and enrolling women, and has been recognized for its efforts in making the campus accessible to students with disabilities. Programs and services specifically designed to assist students with disabilities are offered through Educational Support Services and the Student Health and Counseling Center.

History

The University of Wisconsin-Parkside was founded in 1968 to better serve the needs of a growing population in southeastern Wisconsin. Until that time, the cities of Racine and Kenosha each had a two-year University of Wisconsin College campus. Bringing the two schools together to create UW-Parkside gave students the opportunity to earn a bachelor's degree without incurring the cost of moving to and living in another part of the state.

During the past five decades, the university has created numerous partnerships in both communities as well as cities and towns in the western portion of Racine and Kenosha counties. Two of the most recent partnerships are the Root River Environmental Education Community Center in Racine (REC), and the Center for Environmental Education, Demonstration and Applied Research in Kenosha (CEDAR). ■



UW-P At-A-Glance

Founded: 1968

Degrees granted: Master's, Bachelor's

Accreditation: Full, by North Central Association; School of Business and Technology by Association to Advance Collegiate Schools of Business International; Chemistry degree program by the American Chemical Society

Administration: University of Wisconsin System

Enrollment: 5,300

Students: 1000 on-campus residents; 3,700 full-time undergraduates; 2,800 women, 2,375 men; students from 30 nations, 22 states; median age 23

Academic Programs: 35 undergraduate majors; pre-professional programs in Dentistry, Law, Medicine, Optometry, Pharmacy, Physical Therapy, Physician Assistant, Podiatry, Veterinary Medicine; 70 areas of emphasis; 4 graduate programs

Top 5 majors: (by degrees granted) Business Management; Criminal Justice; Sociology/Anthropology; Communication; Psychology

Graduate Programs: Master of Business Administration; Master of Science in Applied Molecular Biology; Master of Science in Computer and Information Systems

Student/Faculty Ratio: 19/1

Academic Calendar: Fall and spring semesters, summer session

Alumni: 18,190

Athletics: NCAA Division II (the only Division II university in Wisconsin); member of Great Lakes Valley Conference

Nickname: Rangers

School colors: Green, black, white

FACTS

- ▶ The most diverse campus in the UW System; students of color comprise more than 21 percent of the total enrollment.
- ▶ Historically, 60 to 70 percent of new freshmen are first-generation students, 10 percent higher than most four-year universities.
- ▶ The School of Business and Technology's Global Education Center is dedicated to globalizing the business curriculum and creating additional opportunities for student and faculty exchange with international universities.
- ▶ The Pre-Health program excels in preparing students for entry into the various health-related professional fields; 90 percent of UW-Parkside pre-health students were granted acceptance into regional and national professional health programs. ■



Welcome to the Kenosha Area!

One Great Lake, Countless Great Times

Look no further than the Kenosha Area for the perfect getaway! You can be sure everyone in your family will like what they see, as it's a vibrant place full of activities and events. And it's easy to get to, just off I-94 between Milwaukee and Chicago.

Perhaps the Kenosha Area's most notable attraction is Lake Michigan. Parks, beaches, biking and walking trails, museums, lighthouses, and Kenosha's Electric Streetcar line can be found along Kenosha's shore. A charming business district also features cafes and restaurants,

specialty stores and galleries, and special events featuring live music and art. Everything from toys and home décor to espresso and ice cream are served up here.

Just blocks from the water's edge, Kenosha HarborMarket is open outdoors each Saturday, Memorial Day weekend through the end of October. This bustling European-inspired outdoor market features live entertainment, chef demonstrations, locally grown organic produce, meats, prepared foods, and more.



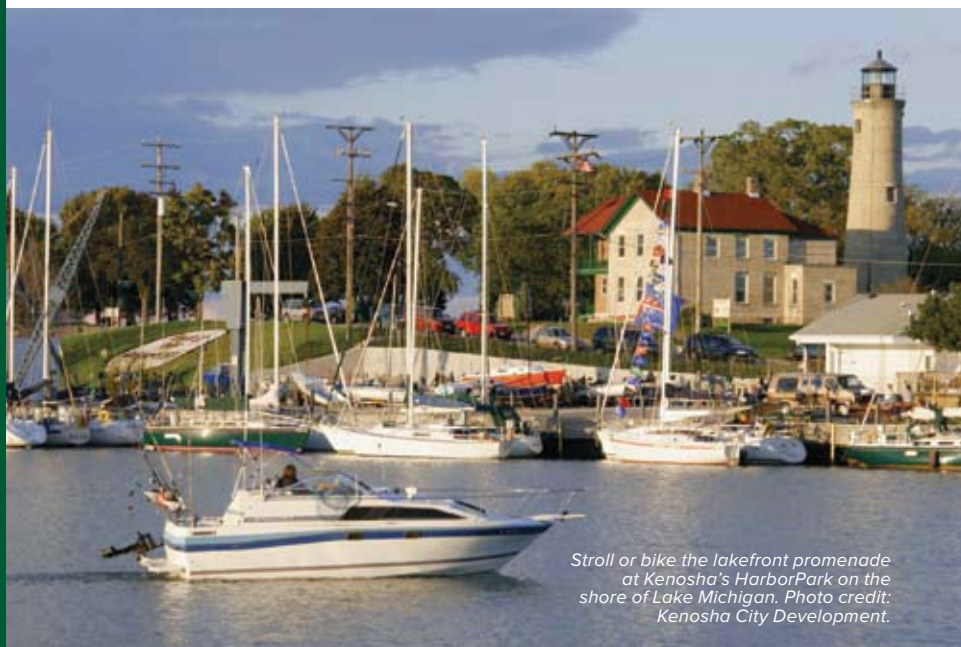
Preserving and celebrating history is evident here. The Kenosha Public Museum is a natural history and decorative arts museum and is home to the largest mammoth ever found in North America. The Dinosaur Discovery Museum is home to an array of meat-eating dinosaurs including a 40-foot T-rex. Discover the history, people and stories of the Upper Middle West before, during and after the Civil War at the new Civil War Museum. The Kenosha History Center explores Kenosha's past, including the contribution of local industries that shaped our community through the years.

Kenosha also features four National Register Historic Districts and historic landmarks such as Rhode Center for the Arts, Durkee Mansion, and the Anderson Arts Center. The presence of a strong theatre and arts community is also felt, from numerous public art displays to an array of galleries and theatre productions throughout the year.

There are many more great times to be found beyond our lakefront. Just a short drive from Lake Michigan, you'll find Jelly Belly Center, the renowned Bristol Renaissance Faire, Dairyland Greyhound Park, IcePlex, RecPlex and more!

There are also golf courses, nature areas, and miles of trails for hiking and biking throughout Kenosha County. Or enjoy some power shopping at the newly expanded Prime Outlets-Pleasant Prairie. The shopping center features more than 90 brand-name stores. Enjoy one-of-a-kind specialty stores here as well. Countless great times await you in the Kenosha Area!

For more information, visit www.KenoshaCVB.com, or call the Kenosha Area Convention & Visitors Bureau at 800-654-7309 or 262-654-7307. Online extras include: the free Kenosha Area Visitors Guide, Event Calendar, E-Newsletter, Hotel Packages & Deals, Coupons, Traveler Stories, and Video Clips. You can also enter to Win a Kenosha Area Getaway. ■



Stroll or bike the lakefront promenade at Kenosha's HarborPark on the shore of Lake Michigan. Photo credit: Kenosha City Development.

Kenosha Area Attractions

Bristol Renaissance Faire

Just west of I-94 at the IL/WI border, 12550-120th Ave., Bristol, (847) 395-7773. www.RenFair.com. Open July 10-Sept. 6, 2010, Sat. and Sun. only, plus Labor Day Monday, 10 a.m.-7 p.m. Escape to a summertime of fun where Knights were Noble, Maids were Merry, and Turkey Legs, Titanic. Shopping, Food, Games of Skill and 15 stages of continuous Entertainment, Celebrate the Time of your Life!

Civil War Museum

5400 First Ave., Kenosha, (262) 653-4141. www.thecivilwarmuseum.org. Open Sun.-Mon. 12-5 p.m., Tues.-Sat. 9 a.m.-5 p.m. Closed Mondays September-February. Learn about the history, the people and the stories of the Upper Middle West before, during and after the Civil War. Changing exhibits, programs and gift shop. Nominal admission fee.

Dinosaur Discovery Museum

5608 Tenth Ave., Kenosha, (262) 653-4450. www.dinosaurdiscoverymuseum.org. Open Tues.-Sun. 12-5 p.m. Discover the link between meat-eating dinosaurs and birds. Featuring dramatic life-size dinosaur replica casts, bones and fossils, interactive exhibits, family programs, a real working on-site paleontology lab, and a gift shop. Free admission.

Electric Streetcar Circulator

Stops include the McCarthy Transit Center, 8th Ave. and 54th St., Kenosha. (262) 653-4287. 2010 Schedule: Jan.

9-Feb. 28: Sat.-Sun. 10:05 a.m.-5:35 p.m., March 1-31: Mon.-Fri. 10:05 a.m.-2:05 p.m., Sat.-Sun. 10:05 a.m.-5:35 p.m.; April 1-Jan. 4: Mon.-Fri. 11:05 a.m.-6:35 p.m., Sat.-Sun. 10:05 a.m.-5:35 p.m. Five beautifully restored electric streetcars travel a 2-mile loop, providing a scenic tour of the Lake Michigan shoreline, HarborPark, two historic districts, downtown business district and the METRA train station. Stops include the McCarthy Transit Center, 8th Ave. and 54th St. Fare is 50 cents for ages 13 and older and 25 cents for 12 and younger. An all-day pass costs \$2 and is available for purchase on the streetcar.

Kenosha History Center

220-51st Place, Kenosha, (262) 654-5770. www.kenoshahistorycenter.org. Tues.-Fri. 10 a.m.-4:30 p.m., Sat. 10 a.m.-4 p.m., Sun. 12-4 p.m. Museum on Kenosha's harbor features the Yesteryear Gallery, the Rambler Legacy Gallery with changing Kenosha automobile exhibits, the adjacent Southport Light Station, and a gift shop with lighthouse and other mementos.

Kenosha Public Museum

5500 First Ave., Kenosha, (262) 653-4140. www.kenoshapublicmuseum.org. Open Sun.-Mon. 12-5 p.m., Tues.-Sat. 9 a.m.-5 p.m. Closed Mondays September-February. Natural history, fine and decorative arts museum, offering classes, bus trips, special programs, events, and gift shop. Free admission. ■

Racine Area Attractions

Downtown Racine

Downtown Racine is where you will find an abundance of shopping, galleries, museums, restaurants and more. Shop at more than 50 customer friendly stores and boutiques where you will find a wide selection of jewelry, fine imports, home decor, clothing, furniture, recreational items, crafts and arts. You can dine at any of the more than 30 eclectic restaurants which offer a wide range of cuisine, prices and atmospheres. Enjoy world-class museums and 14 art galleries.

North Beach

Michigan Blvd. and Kewaunee St., Racine (262) 636-9131. North Beach offers nearly 50 acres of sandy, natural paradise and more than 2,500 feet of shoreline. One of only three certified Clean Beaches on the Great Lakes. Complete with Volleyball courts, a snack bar, a community-built playground, and a million-dollar view.

For more information, go to: www.racine.org.

Racine Theatre Guild

2519 Northwestern Ave., Racine (262) 633-4218, www.racinetheatre.org. A community theatre founded in 1938, the RTG annually produces 8 main-stage plays and musicals. Racine Theatre Guild manages the Racine Children's Theatre and offers a jazz series, a comedy series, theatre trips, special events, classes and much more.

Racine Zoological Gardens

2131 N. Main St., Racine www.racinezoo.org, (262) 636-9189 Nestled on the sandy shores of beautiful Lake Michigan, the Racine Zoo is home to some of the world's most remarkable and endangered wildlife. The walk is easy for kids and seniors, making the Racine Zoo a great way to enjoy the outdoors with the family.

SC Johnson Administration Building

1525 Howe St., Racine (262) 260-2154 (reservations required) SC Johnson's worldwide corporate headquarters, designed by Frank Lloyd Wright, opened its doors in 1939. The Great Workroom with its unique columns, innovative use of glass tubing, and specifically designed furniture are among the features in this working environment that has been hailed as a "center of creativity." The Administration Building is listed on the National Register of Historic Places. Tours offered on Fridays only.

Wind Point Lighthouse

Lighthouse Drive, Wind Point between Three and Four Mile roads, Racine (262) 639-2026 Built in 1880, the lighthouse is the oldest and tallest in operation on Lake Michigan. Fully automated in 1964, the building now serves as a town hall, but the grounds are open to the public. ■







Executive Inn - Kenosha

CALL HOTEL DIRECT FOR PARKSIDE DISCOUNTS

Just off I-94 and only 15 minutes from campus, we offer a complimentary hot deluxe breakfast, free WiFi, onsite lounge, indoor pool/hot tub & more. Visit Rusha Street, our on-site lounge. Over 20 restaurants within a 2-mile drive.

262.857.7699
www.bestwestern.com/executiveinnkenosha
7220 122nd Ave.
Kenosha, WI 53142



Camelot

APARTMENTS

Spacious and Inviting!

1 and 2 bedroom Apartments

Minutes from campus, near parks,
shopping, bus and bike trails

1468 16TH Avenue • Kenosha, WI 53140
(262) 551-9660
www.sierrarealtymmanagement.com/ourcommunities.html

2011-2012 Academic Calendar

FALL SEMESTER	2011
Labor Day (No Classes)	Sept. 5
Ranger Welcome - New Freshman Orientation	Sept. 5 & 6
Instruction Begins	Sept. 7
Thanksgiving Recess	Nov. 24-27
Instruction Ends	Dec. 16
Commencement	Dec. 18
Final Examinations	Dec. 17-23

WINTERIM SESSION	2011-2012
Instruction begins	Dec. 27
Instruction ends	Jan. 14

SPRING SEMESTER	2012
Martin Luther King Day (No Classes)	Jan. 16
Instruction Begins	Jan. 17
Spring Break	March 11-17
Instruction Ends	May 5
Final Examinations	May 7-12
Commencement	May 12

SUMMER SESSION	2012
1st 4-Week Session Instruction Begins	May 21
Memorial Day (No Classes)	May 26-28
1st 4-Week Session Instruction Ends	June 16
2nd 4-Week & 8-Week Sessions Instruction Begins	June 18
Independence Day (No Classes)	July 4
2nd 4-Week Session Instruction Ends	July 14
3rd 4-Week Session Instruction Begins	July 16
August Graduation Application Deadline	August 1
3rd 4-Week & 8-Week Sessions Instruction Ends	August 11

Important Phone Numbers

Academic Advising (Advising & Career Center)	(262) 595-2040
Academic Records (Office of the Registrar)	(262) 595-2281
Alumni Relations	(262) 595-2233
Athletics Office (Sports and Activity Center)	(262) 595-2245
Campus Events Hotline	(262) 595-2408
Cashiers Office	(262) 595-2258
Career Center	(262) 595-2452
Child Care Center	(262) 595-2227
Counseling Services (Student Health & Counseling Center)	(262) 595-2366
Disability Services	(262) 595-2610
EMERGENCY (University Police)	(262) 595-2911
Non-Emergency (University Police)	(262) 595-2455
First Year Experience	(262) 595-2477
Health Insurance (Student Health & Counseling Center)	(262) 595-2366
Health Services (Student Health & Counseling Center)	(262) 595-2366
Information (Campus Concierge)	(262) 595-2345
Learning Assistance	(262) 595-2370
Multicultural Student Affairs	(262) 595-2731
Residence Life Office	(262) 595-2320
Scholarships & Financial Aid, Office of	(262) 595-2574
Student Employment (Career Center)	(262) 595-2016
Tutoring/Writing Center	(262) 595-2044
University Activities Office	(262) 595-2278
University Bookstore	(262) 595-2301
Volunteer Program (Career Center)	(262) 595-2011
Writing Center	(262) 595-2752

Historically, 60 to 70 percent of new freshmen are first-generation students, 10 percent higher than most four-year universities.



Windows® Life without Walls™ Dell recommends Windows 7.

University of Wisconsin Parkside Students get the best price on consumer PCs from Dell*

If you find a better price on your day of purchase, contact a Dell University sales specialist and we will beat that price.

Inspiron™ duo
Switch from touch to type in seconds.

- Genuine Windows® 7 Home Premium

\$599⁹⁹

Your PC, simplified. Windows 7

Dell.com/UWParkside

*BEST PRICE GUARANTEE does not apply to retail or reseller offers, Dell Outlet, affiliate websites, coupons, auctions or quotes from Dell sales representatives. You must present a valid E-value code or saved cart image with lower price to Dell U sales specialist on day of purchase prior to your transaction.

This Guide brought to you by these

Proud Supporters of UW-P



ACCOMMODATIONS

Best Western Executive Inn
Please see ad on p. 26.

ATTRACTIONS

Racine Visitors Center
Please see ad on p. 15.

BANKING

Campus Dough
Please see ad on p. 31.

Educators Credit Union
Please see ad on p. 32.

DINING

Hobnob
Please see ad on p. 5.

UW-Parkside Dining Service
Please see ad on p. 12.

UW-Parkside Student Center
Please see ad on p. 11.

HOUSING

Camelot Apartments
Please see ad on p. 26.

Petretti Apartments
Please see ad on p. 18.

SHOPPING

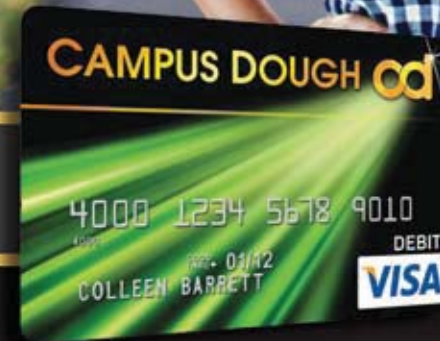
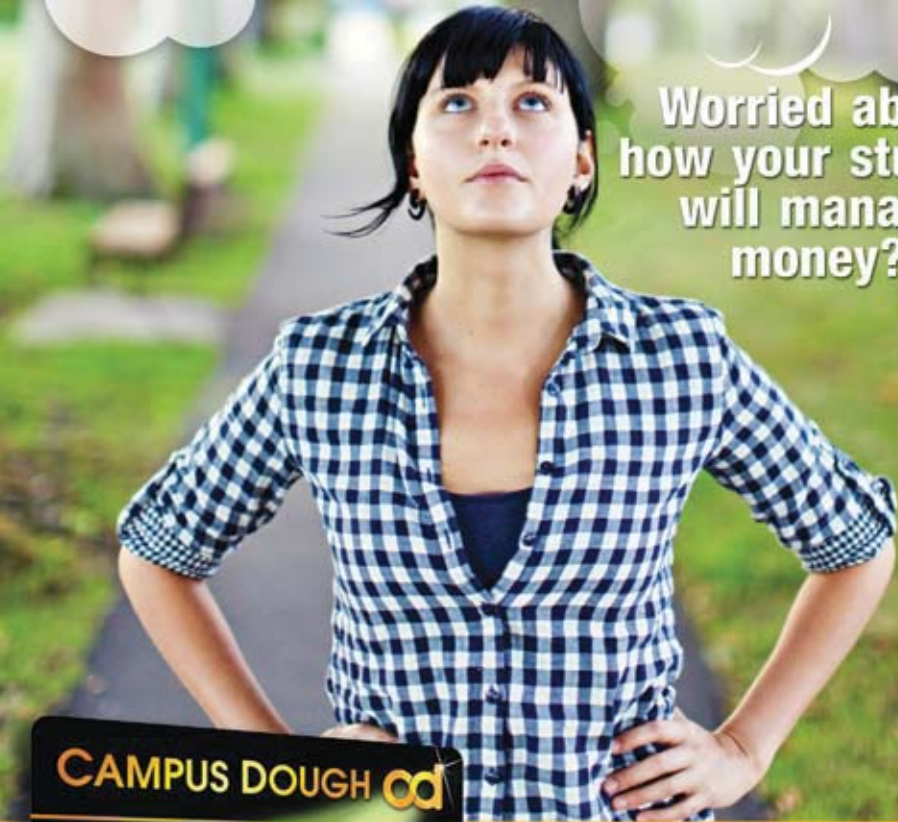
Dell
Please see ad on p. 29.

For advertising inquiries, please contact UPM Sales Consultant
Jon Hydeman at (866) 721-1357 or email: ask@universityparent.com

www.universityparent.com/uwp



Worried about how your student will manage money?



Check out the CAMPUS DOUGH CARD!

The Best Way for Students to Manage & Save Money.

www.campUSDough.com



The Campus Dough DebitSmart Visa® Prepaid Card is issued by MetaBank™ pursuant to a license from Visa U.S.A. Inc. The USA PATRIOT Act is a Federal law that requires all financial institutions to obtain, verify, and record information that identifies each person who opens an account. You will be asked to provide your name, address, date of birth, and other information that will allow us to identify you. You may also be asked to provide documentation as proof of identification. "100% approval guaranteed" and "Everyone Qualifies" is contingent upon successfully passing the mandatory identification confirmation.



Educators
CREDIT UNION
@ UW-Parkside

Our Full service credit union is on campus in the Student Center!



All you need to become an Educators member is \$5 in a savings account.

Educators membership is open to anyone who has attended school in Southeastern Wisconsin in addition to education, healthcare and government related employees and their families.

Stop in and See Our Difference.

- Web and mobile banking.
- Co-branded Debit Card.
- Two convenient on campus ATMs.
- 37,000 fee free Allpoint ATMs Worldwide.
- Direct deposit available for financial aid reimbursement.
- Student loans available.
- Follow us on Facebook and Twitter!

(262) 595-2150

www.ecu.com

Federally insured by NCUA

