

UNIVERSITY PARENT
GUIDE



2011

**University of Louisiana
at Lafayette**

CAMPUS RESOURCES – LOCAL INSIGHT – HELPFUL INFORMATION

TOP 10 REASONS TO LIVE AT CAMPUS CROSSINGS



- 1. FREE TANNING, 24 HOUR FITNESS CENTER AND FULL-SIZE WASHER/DRYER IN EVERY APT**
GTL everyday!
- 2. PEEP HOLES**
Just in case your blind date is ugly
- 3. PET FRIENDLY**
To ensure you wake up next to something cute
- 4. HIGH SPEED INTERNET**
To enhance your Facebook stalking
- 5. FULL-SIZE BASKETBALL COURT & BEACH VOLLEYBALL COURT**
Get your game on!
- 6. MONTHLY PROPERTY EVENTS**
Eat free food with your neighbors
- 7. MOST POPULAR POOL IN LAFAYETTE**
Making it a little easier to skip class
- 8. UTILITIES INCLUDED****
Take as many showers as you'd like
- 9. FULLY FURNISHED APARTMENTS**
No heavy moving
- 10. NEAR CAMPUS LOCATION, OFF CAMPUS FUN**
No RA's to babysit you

**Restrictions apply on utility usage

200 Theater Street, Lafayette, LA 70506
 Facebook: facebook.com/lafayetteapts
 Twitter: twitter.com/lafayetteapts
 MySpace: myspace.com/campuscrossingslafayette

888.694.4145
 Text "GOCAJUNS" to 47464



a campus apartments community

campusapartments.com/lafayette



Across From
Cajun Field!

Taking student living to a whole new level.

1, 2, 3 & 4 bedroom plans available - fully furnished	24-hr emergency maintenance
Individual leases w/ utilities included*	Visit website for full list of features and current specials!
<small>*restrictions apply on electric usage</small>	

universityhouse.com
337.234.6784

Windows® Life without Walls™ Dell recommends Windows 7.

University of Louisiana Lafayette Students
get the best price
 on consumer PCs from Dell*

If you find a better price on your day of purchase, contact a Dell University sales specialist and we will beat that price.

Inspiron™ duo
 Switch from touch to type in seconds.

- Genuine Windows® 7 Home Premium

\$599⁹⁹

Your PC, simplified. Windows 7

Dell.com/ULLafayette

*BEST PRICE GUARANTEE does not apply to retail or reseller offers, Dell Outlet, affiliate websites, coupons, auctions or quotes from Dell sales representatives. You must present a valid E-value code or saved cart image with lower price to Dell U sales specialist on day of purchase prior to your transaction.

University Parent Media
3800 Arapahoe Avenue, Suite 210
Boulder, CO 80303
Phone: (866) 721-1357
Email: ask@universityparent.com

PUBLISHER
Sarah Schupp

VP OF OPERATIONS
Jon Saints

SALES REPRESENTATIVES
Rebecca Boozan
Mike Gooley
Scott Greisser
Sharon Haddad
Jon Hydeman

PRODUCTION DEPARTMENT
Grace Cassara
Eric Hosmer
Lee Riley
Meg Steinborn

OFFICE MANAGER
Linsey Straugh

UNIVERSITY & COLLEGE RELATIONS
Sarah Koontz

DESIGNER
Grace Cassara

FOLLOW US ON:

 facebook.com/collegeparents

 twitter.com/4collegeparents



The presence of University of Louisiana at Lafayette logos and marks in this Guide does not mean the school endorses the products or services offered by advertisers in this Guide.

Advertising Inquiries:
(866) 721-1357
ads@universityparent.com

©2011 University Parent Magazines, Inc.



UNIVERSITY
OF
LOUISIANA
Lafayette

Office of Orientation
Lee Hall 106
PO Box 44252
Lafayette, LA 70504
(337) 482-1391

orientation@louisiana.edu
www.ulorientation.com

About Our Guides

University Parent Media works closely with institutions around the country to bring together the most relevant, timely information into one all-inclusive resource.

We have published this guide with the mission of helping you easily navigate the university and its surrounding community. Ultimately, we hope these resources help nurture your connection and involvement in your student's college years!

Make the Most of Your Parent Guide

- Hang on to your Guide! Inside you'll find information that's useful all-year long, including important phone numbers, web sites and calendars.
- Store your copy in a purse or glove compartment for convenient reference.
- Pass it along to parents of prospective college students to promote the school.
- Please recycle when finished!
- Discover more content, tips and local business information by visiting us online at: www.universityparent.com/lalaf



contents

6 | UL Lafayette Guide

Comprehensive advice, information for campus success

- 6 | Welcome to the University of Louisiana at Lafayette
- 8 | Academic Information, Contact Information
- 9 | University Honors Program
- 10 | UNIV 100 - Cajun Connection
- 11 | Helping Your Student Succeed in the Classroom, University Colleges & Academic Advising, Academic Success Center/Junior Division
- 12 | Other Important Academic Resources
- 13 | Academic Honors & Awards
- 14 | Commonly Asked Academic Questions
- 16 | Student Affairs, Campus Safety
- 18 | Student Health & Wellness
- 20 | Campus Involvement
- 28 | University Bookstore
- 29 | Tuition & Fee Payments, Payment Methods

30 | Lafayette Community

Make the most of your visit by getting to know the area

- 30 | Welcome to Lafayette!

34 | Resources

Must-have knowledge to navigate your way

- 34 | Campus Map
- 36 | Important Dates
- 37 | 2011 - 2012 Academic Calendar
- 38 | Proud Supporters



Welcome to the University of Louisiana at Lafayette

Dear Parents:

On behalf of our University faculty and staff, I welcome you and your student to our campus community.

The word “community” is a fundamental value of the University of Louisiana at Lafayette. Alumni who return to campus speak fondly of their sense of belonging to a family here, in spite of the University’s large enrollment. That supportive environment will sustain your student through the challenging but transforming experience of earning a college degree.

UL Lafayette faculty and staff strive for continuous improvement, and that commitment is evident in our university’s evolution through the years. However, your student will share core elements of the UL Lafayette experience with over 100,000 alumni who have gone before

them: excellent instruction and engaged learning, supportive faculty members, cutting edge technology, and investment in campus and community service.

I encourage you to become involved in our campus community and discover the wealth of culture and knowledge available to your student. We can work in partnership with you to assist your student in becoming a well-rounded person who, upon graduation, will be ready to assume an important role in society.

**Sincerely,
Dr. Carolyn Bruder
Provost & Vice President
for Academic Affairs ■**

Welcome from Student Affairs

Dear Parents:

I sincerely welcome you to the University of Louisiana at Lafayette. UL Lafayette regards your family as an integral part of the University community, and we are eager to acquaint you with the many programs, services, and opportunities which exist at UL Lafayette. The opportunities in Student Affairs range from extracurricular activities like Recreational Sports and Greek Affairs to essential services like those provided by Student Health Center and Career Services. We are eager to assist your son or daughter in utilizing these services that Student Affairs has to offer.

Your son or daughter is beginning a phase of development that will lead to intellectual, physical, and emotional growth. In the next few years, the changing nature of their lives will certainly have an impact on you and your family. This Parent Handbook has been developed to provide you with a wealth of information that will help you during this time of transition. The Handbook is a terrific resource and I encourage you to review and keep it as a reference guide.

Should you need additional information or have any questions, my office is ready and willing to assist you. Student Affairs is here to answer any questions you might have and to help you resolve any problem you may face. We promise to listen and offer our assistance. Please do not hesitate to contact me at (337) 482-6266 or at pratt@louisiana.edu with any concern, question, or matter in which you need assistance.

Again, I welcome you to our campus and we will do everything possible to assist your son or daughter in contributing to a successful and fulfilling experience at the University of Louisiana at Lafayette.

Sincerely,

**Edward A. Pratt
Vice President for
Student Affairs ■**



FREE SHUTTLE TO CAMPUS

**CONNECTED STUDENT
LIVING ONLY AT**



For more info,
text “lafayette” to 47464
Standard rates apply.

www.edgelafayette.com

866.375.2885    

Academic Information

Academic Colleges Dean Contact Information

College of the Arts H. Gordon Brooks, Fletcher Hall 205 (337) 482-6224 http://arts.louisiana.edu	College of Engineering Mark Zappi, Madison Hall 106 (337) 482-6685 http://engineering.louisiana.edu
B.I. Moody College of Business Joby John, Moody Hall 226 (337) 482-6491 www.moody.louisiana.edu	College of General Studies Phebe Hayes, DeClouet Hall 104 (337) 482-6829 http://gs.louisiana.edu
College of Education Gerald Carlson, Maxim Doucet Hall 114 (337) 482-6678 http://coe.louisiana.edu	College of Liberal Arts David Barry, Martin Hall 246 (337) 482-6219 http://liberalarts.louisiana.edu
College of Nursing & Allied Health Professions Gail Poirrier, Wharton Hall 254 (337) 482-5604 www.nursing.louisiana.edu	Ray P. Authement College of Science Bradd Clark, Martin Hall 219 (337) 482-6986 www.ulscience.com

Academic Success Center Contact Information

Director Bette Harris Lee Hall 115 (337) 482-2059 jd@louisiana.edu	25+ Adults Lauren F. Landry Lee Hall 115 (337) 482-5434 adultstudents@louisiana.edu
Transfer Services Lana Rodriguez Lee Hall 106 (337) 482-2059 transfer@louisiana.edu	Reentry Services Mary Bourque Lee Hall 115 (337) 482-5434 reentry@louisiana.edu
The Learning Center Caro Henuaw Lee Hall 2nd Floor (337) 482-5254 tlc@louisiana.edu	Career Counseling Center Lucy Gammon Lee Hall 109 (337) 482-5431 lccgammon@louisiana.edu

University Honors Program

Dr. Julia Frederick, Director
 Judice-Rickels Hall 206
 (337) 482-6700
<http://honors.louisiana.edu>
honors@louisiana.edu

The University Honors Program provides serious and highly motivated students with a set of unique intellectual and educational opportunities designed to help them reach their potential. Student who complete all program requirements graduate with an Honors Baccalaureate Degree.

Students in the Honors Program benefit from the following opportunities and resources:

- Smaller class sizes and contracts to personalize their education
- Work with Honors Professors
- Research Opportunities
- Honors Seminar
- Honors Scholarship Opportunities
- Honors Events & Expense Paid Honors Trips
- Honors Residence Halls
- In-House Computer Lab and services in Judice-Rickels Hall



Qualifications

First-Time Freshman qualify for the Honors Program with an ACT Composite of 26 (SAT 1170) or higher. Students must apply to the program and meet with the Honors Program Director for an overview of program qualifications. Students may also apply to the program at any point in their undergraduate career with a GPA of 3.0 or better.

Program Requirements

To be eligible for graduating with an Honors Baccalaureate Degree, students must complete the following requirements of the Honors Program:

- Maintain a 3.0 GPA as a Freshman and 3.2 GPA during Sophomore, Junior, & Senior Year
- Complete 18 credit hours of Honors Courses during their undergraduate career
- Enroll in and attend an Honors Seminar each semester of enrollment in the Honors Program ▶

SPECIAL STUDENT/PARENT RATES!!



CALL AND ASK FOR OUR ULL RATE PLUS MARRIOTT REWARDS

Minutes from University of Louisiana and the Cajundome!
 Complimentary Breakfast! Indoor Pool and Whirlpool!
 On-Site Fitness Center!

Call Today: (337) 235-9898

FAIRFIELD INN & SUITES, 2225 NW Evangeline Thruway, Lafayette, LA



UNIV 100 – Cajun Connection

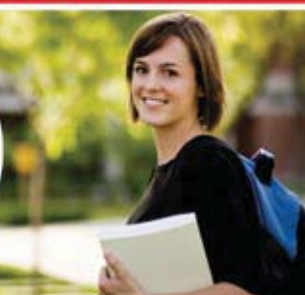
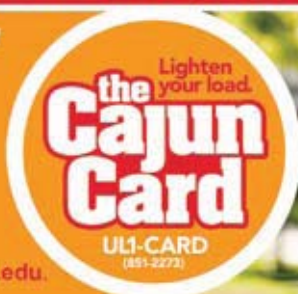
Dr. Theresa Wozencraft, Director
Lee Hall 109
(337) 482-6599
cajunconnection@louisiana.edu

UNIV 100, or the Cajun Connection course, is the First-year Seminar for incoming freshmen created by the University of Louisiana at Lafayette's Quality Enhancement Plan. The Cajun Connection course focuses on stimulating students' intellectual curiosity and social responsibility and providing them with knowledge and insight necessary for fulfillment and success in college and in their subsequent careers. The Cajun

Connection provides freshmen with the opportunity to connect to campus life, faculty and staff, courses and other students. The course supports student success by helping students to 1) Build effective time management and learning skills, 2) Use college-level information resources and library materials, 3) Locate and describe campus resources to address needs, 4) Determine and research occupational interests and career paths, 5) Engage in campus life by attending events, and 6) Demonstrate the use of effective budgeting techniques. It is being implemented on a rolling basis across colleges in the 2010-2013 academic years, with Moody College of Business Administration, College of Liberal Arts, and College of Sciences offering the seminar in Fall 2011. ■

STUDENT ID AND SO MUCH MORE...

Make purchases on and off campus using "CAJUN CASH". The safe and convenient way of student spending. Learn how one card can provide all of your student's needs. Visit www.cajuncard.louisiana.edu.



Helping Your Student Succeed in the Classroom

The University of Louisiana at Lafayette offers over 78 undergraduate degree programs. Faculty and staff on our campus are committed to ensuring your student is successful academically. While your student's academic journey is their own, you can support them by knowing about the various support resources on our campus to help students academically. ■

University Colleges & Academic Advising

The University is split into 8 academic colleges. Each college is responsible for the degree plans and academic advising of students in their college.

Each student on campus is assigned an official faculty or staff academic advisor. Students can obtain the contact information for their academic advisor through their ULink Student Portal account. Academic Advisors are trained to assist your students with completing the degree requirements for their particular major. Each student is required to meet with an Academic

Advisor each semester during their undergraduate degree in order to be cleared to register for classes. ■

Academic Success Center/ Junior Division

Lee Hall 115
(337) 482-6836
<http://studentsuccess.louisiana.edu>
Bette Harris, Director

The Academic Success Center is the University's academic support center. Services include academic counseling, career information, tutoring, and assistance interpreting financial aid guidelines. Counselors also assist students with reentry, transfer, dropping classes, and changing majors. Here are some of the services offered through the Academic Success Center:

The Learning Center

Lee Hall Second Floor
(337) 482-6583
<http://studentsuccess.louisiana.edu>
Caro Henauf, Coordinator

The Learning Center is a place where students can get help with academic problems, its main objective being to help students achieve academic success. It offers FREE one-on-one tutoring, study group tutoring, supplemental instruction, on-line tutoring (Smarthinking), computer lab assistance, and other on-line resources. These services are offered in coordination with various academic and administrative departments on campus and are available to all students.

The SMARTHINKING online tutoring service is a FREE resource available 24/7 that students can utilize when ►



The Learning Center is closed or when a tutor is not available for a specific subject. It is designed for students who seek help with core academic courses ranging from basic math to calculus II, economics, statistics, accounting, chemistry, and writing for all subjects. Students have access to this program via their ULink account by clicking the Tutoring tab and the Smarthinking icon.

The Learning Center also provides Academic Success Workshops to help students with their academic pursuits.

Career Counseling Center

110 Lee Hall
(337) 482-5431

<http://studentsuccess.louisiana.edu/career/>

Lucy Gammon, Coordinator

The Career Counseling Center provides services for students who are undecided on a major or just uncertain about the one they have selected. The Center offers:

- Free career testing and vocational assessments
- Career Counseling Center Library.
- ACSK 140 Career Decision Making Class ■



Other Important Academic Resources

Faculty

One of the greatest tips you can provide your student is to encourage them to visit with their faculty members outside of class. Students are often hesitant to interact with faculty members, but faculty members are available to assist students and love to interact with students outside of class. Encourage your student to visit with their faculty frequently for assistance in their courses.

English Department Writing Center

H.L. Griffin Hall 107
(337) 482-5224

<http://english.louisiana.edu/about-us/writing-center/>

The Writing Center welcomes students from all disciplines and will assist students

at any stage of the writing process:

- Helping students enhance their writing skills
- Helping students move from writer-based to reader-based prose
- Focusing on writing processes and the value of creating multiple drafts
- Helping students see strengths and weaknesses in their writing
- Helping students learn to proofread their writing
- Empowering students to own their writing
- Nurturing creative ideas to students

Registrar's Office

Martin Hall 171
(337) 482-6287

<http://admissions.louisiana.edu/registrar>

Dr. DeWayne Bowie, Registrar

The Office of the Registrar is responsible for conducting registration activities, maintaining current and permanent academic records on all students, and verifying student enrollment. ■

Academic Honors & Awards

SEMESTER HONORS - Students who do exceptionally well in their studies at UL Lafayette receive special recognition. At the end of each regular semester, students will receive notification of Semester Honors for the following two areas:

- Dean's List: Semester GPA of 3.5
- President's List: Semester GPA of 3.8

HONORS CONVOCATION - The special event held each spring recognizes sophomores, juniors and seniors who have maintained a cumulative grade point average of at least 3.20 on all college work pursued.

HONORS AT GRADUATION - To earn a degree with honors, students must demonstrate exceptional scholarship. Students can receive three different levels of Honors at Graduation:

- Summa Cum Laude: 3.9 cumulative GPA
- Magna Cum Laude: 3.7 cumulative GPA
- Cum Laude: 3.5 cumulative GPA

Students who complete certain extra requirements through the University Honors Program will be eligible to receive an Honors Baccalaureate Degree. ■

STAYBRIDGE SUITES
Lafayette - Airport
129 E. Kaliste Saloom Road
Lafayette, LA 70508

Red Roof Inn
1718 North University Avenue - Lafayette, LA 70507
(337) 233-3339 - www.redroofinn.com

This Red Roof Inn is conveniently located within minutes of downtown, the Univ. of Louisiana-Lafayette, the Cajundome, Acadian Village & the airport. This Inn has a friendly staff & is just minutes from many restaurants, including great Cajun & Creole menus.

Amenities Include:
Restaurant within 1 mile - Airport within 20 miles
Wireless Internet (WiFi) - ADA Accessible Rooms - Pets Allowed


• Complimentary Wireless & Wired High-Speed Internet Access
• Complimentary Business Center, Fitness Center, On-Site Guest Laundry
• Complimentary Hot Buffet Breakfast (7 Days/Week)
• Located just minutes away from UL Lafayette
• All rooms have fully furnished kitchens

Come and Stay With Us Today!
We are minutes from ULL!
(337) 267-4666
www.staybridge.com/lafayettela

Red Roof Inn
1718 North University Avenue - Lafayette, LA 70507
(337) 233-3339 - www.redroofinn.com

This Red Roof Inn is conveniently located within minutes of downtown, the Univ. of Louisiana-Lafayette, the Cajundome, Acadian Village & the airport. This Inn has a friendly staff & is just minutes from many restaurants, including great Cajun & Creole menus.

Amenities Include:
Restaurant within 1 mile - Airport within 20 miles
Wireless Internet (WiFi) - ADA Accessible Rooms - Pets Allowed



Commonly Asked Academic Questions

“How many credit hours should my son or daughter schedule?”

A first-time freshman should schedule 12-15 hours in the first semester, which is a reasonable load for a good student. Whether or not the student must work should be considered in making this decision.

Note that if a student schedules fewer hours in any semester than are listed in his/her curriculum, s/he may not graduate at the end of eight semesters (four years) unless these hours are made up in another semester or summer session.

“How important is class attendance?”

One of the greatest indicators of academic success is class attendance. Coupled with an adequate study schedule, students who attend class do well academically. Encourage your student to attend class as both an obligation and a privilege. Specific class attendance policies are dictated on

course syllabi and are at the discretion of faculty members teaching courses.

Extenuating or extreme circumstances (extreme illness, family death, etc) may cause students to miss class for extended periods of time. In these cases, students should contact the Dean of Students Office at (337) 482-6272 to get an extended absence.

Encourage your student to be in touch with their professor each time they miss class to ensure they have not missed any important course information.

“How many hours a week should my son or daughter be studying?”

In general, a student should be studying 2 hours outside of class for each credit hour they take during a semester. This means that if a student is enrolled in 14 credit hours, they should be spending approximately 28 hours outside of class per week studying and preparing for class.



Many students underestimate the number of hours needed to study and do well in college courses. Encourage your son or daughter to spend adequate time studying and preparing. Their coursework should be the first priority.

“My son or daughter has to work. How many hours should they work per week?”

The optimal maximum load for outside employment is 15 hours per week.

“How many credit hours must a student earn to maintain TOPS eligibility?”

A student on Louisiana TOPS must earn 24 semester hours in the Academic Year. Students must be registered for 12+ credit hours on the 14th class day in order to receive TOPS in any given semester. The total of 24 semester hours for TOPS eligibility can be earned over the course of Fall semester, winter intercession, spring semester, and May intercession. Summer term does not count toward the 24 credit hours required by TOPS. ■



Student Affairs

Helping your student be successful outside the classroom

The Division of Student Affairs exists to support the student experience and help students feel engaged in our campus community.



and property of the university student body, faculty and staff. The following are services provided by the UL Lafayette Police for the university community:

- The taking of all reports of crimes committed on the campus and subsequent investigations of those crimes
- On campus emergency service
- Routine Police Patrol – vehicles, foot and bicycle patrols
- Accident reports. All accidents occurring on campus must be reported to the UL Lafayette Police Department
- Educating the campus community in crime risk awareness and reduction through presentations, printed crime prevention materials, victims' assistance and referral services and self defense classes
- Recovered Property Division
- Weekly crime log published on the department's web page, along with annual crime statistics

The UL Lafayette Police Department operates on a 24 hour/7 day a week basis. It also serves as the central

Campus Safety

The University of Louisiana takes seriously the safety and security of our campus and students. Here is what every parent should know about campus safety.

UL Lafayette Police – Bittle Hall
(337) 482-6447
www.louisiana.edu/Student/Police
Joey Sturm, Chief of Police

The primary purpose of the UL Lafayette Police Department is to protect life

Lafayette's Only Full-Service Holiday Inn Ready to Serve You!

FEATURES & AMENITIES

- FREE High-Speed Internet
- Signature "Comfort" Bedding
- Priority Club Rewards
- Indoor Swimming Pool/Hot Tub/Sauna
- Tennis, Basketball, & Volleyball
- Pet Friendly Hotel

Holiday Inn
LAFAYETTE
CONFERENCE CENTER

2032 NE Evangeline Thruway - Lafayette, LA 70505
www.hilafayette.com

(337) 233-6815

information center for the university during after hours and on weekends. In addition, during campus-wide emergencies, the department serves as operational headquarters for the university administration.

Campus Crime Statistics

The University of Louisiana at Lafayette's annual security report includes statistics for the previous three years concerning reported crimes that occurred on campus, in certain off-campus buildings or property owned or controlled by the University of Louisiana at Lafayette and on public property within, or immediately adjacent to and accessible from the campus. The report also includes institutional

policies concerning campus security, such as policies concerning alcohol & drug use, crime prevention, the reporting of crimes, sexual assault and other matters. You can obtain a copy of this report by contacting the University of Louisiana at Lafayette Police Department at (337) 482-6447 or by accessing the following website: <http://police.louisiana.edu/clery-act/index.shtml>. ■

Campus Environmental Health & Safety Office

The University of Louisiana at Lafayette Environmental Health & Safety office develops plans and protocol regarding campus emergency preparation. Detailed information can be obtained at their website: <http://safety.louisiana.edu>. ■

Campus Emergency Notification System

All students are encouraged to register their cell phone number with the university's Emergency Notification System (ENS). This system will alert students, faculty, and staff of steps to take in case of a major campus emergency.

Students can register at <http://ens.louisiana.edu> and log-in with user name/password. ENS is a free service through the university. Cell phone information is secure, and students will only be sent text messages in relation to a campus emergency.

In the case of a Major campus emergency, all campus departments are equipped with emergency radios in order to notify classes & labs of emergency information. ■





Stay Informed

Share the following information with those close to you, and know how to stay informed about changing information in the case of a campus emergency:

Campus Emergency Hotline:

(337) 482-2222

Online: www.louisiana.edu or

<http://safety.louisiana.edu>

University Police: (337) 482-6447 or 911

Student Health & Wellness

The health and well-being of our students is an important aspect of the UL Lafayette campus community.

Student Health Services

Saucier Hall

(337) 482-5464,

(337) 482-1328 (Appointments)

www.louisiana.edu/Student/Health

Dr. Marelle Yongue, Director

The Student Health Services (SHS) strives to provide quality, accessible, cost sensitive primary medical care and active health promotion to the students. SHS is located in Saucier Hall across from Cypress Lake and offers both walk-in services as well as appointments.

Students taking a total of 6 or more credit hours during fall/spring semester, or 3 or more hours in the summer, are eligible to utilize SHS. Students not meeting these credit hour requirements can purchase a membership by visiting our office.

Students will need to update their personal data and insurance coverage each semester. Go to our website and click on 'SHS Appointment Time-Saving Tips'.

Services provided by SHS:

- Assessments for illness or minor injuries
- General Physicals
- Referrals for serious illness or injury

Laboratory work, office procedures, pap smears, IV therapy, injections and prescriptions are all billable procedures.

Services not provided by SHS:

- Management of chronic illness
- Injuries sustained as a result of a motor vehicle accident
- X-rays
- Obstetrical Care
- Dental Care

Student Insurance – view all plans at the SHS website.

All registered UL Lafayette students are eligible for insurance coverage.

All domestic undergraduate students taking 7 hours or more in fall/spring and 4 hours or more in summer and all domestic graduate students taking 6 hours or more in fall/spring or 3 hours or more in summer are assessed a fee at registration and are enrolled in the Basic Insurance Plan when fees are paid upon registration. This student insurance will supplement any other insurance the student may have (except Medicaid/Tricare). Domestic students not meeting these hour requirements may enroll in the program by paying the semester premium fee at Corona Hall within the first 30 days of the fall and spring semester and 15 days of the summer.

All international students are required to have insurance coverage. All international students are assessed the fee for the Basic Plan at registration.

Dependents must be enrolled at the same time and in the same Plan as the insured student.

An Optional Increased Coverage Policy is available for both domestic and international students. The enrollment is done through the current insurance company (exclusions may apply) and must be obtained within the first 30 days of the fall and spring semesters and 15 days of the summer. Brochures and enrollment forms for the Optional plans may be obtained at the SHS office and website and at the Office of International Affairs.

Counseling & Testing Center

Olivier Hall Room 212

(337) 482-6480 (Information & Appointments)

www.louisiana.edu/Student/Counseling

Dr. Brian Frederick, Director

The Counseling and Testing Center is staffed by licensed professional counselors who are available to provide personal counseling for students who may need assistance in dealing with stress, relationship problems, grief issues or adjustment difficulties free of charge. Short-term therapy sessions may be provided for individuals, couples or groups.

National standardized testing is administered by the supervisor of testing whose office is located in the center. Information about tests and test applications can be obtained upon request.

Rec Sports

Bourgeois Hall

(337) 482-6159

<http://recsports.louisiana.edu>

Wayne Harper, Director ▶

The Rec Sports Department offers a wide variety of recreational programs for UL Lafayette students, faculty and staff. The \$10 million dollar recreation complex (Bourgeois Hall) is a modern, first class facility, which provides open recreation as well as structured intramural events. Bourgeois Hall contains four basketball/volleyball courts, nine racquetball courts, four lane 1/8 mile jogging track, weight room, aerobics room, multi purpose rooms and has 12 outdoor tennis courts.

The Student Aquatic Center is a state-of-the art outdoor water complex which includes: lap pool, leisure pool, 20 person whirlpool, sand volleyball and sunbathing areas. ■



The brand new (open Fall 2011) 20,000 square feet weight room/cardio area is a fantastic fitness addition. It will have a rock climbing wall, weight training area, and a balcony featuring the latest and greatest cardio equipment. This will be the place to be seen, keeping our students fit and healthy!

Campus Involvement

www.ulstudentlife.com

Students who are involved on campus are more successful, have higher GPAs, and graduate more quickly. UL Lafayette has over 170 student organizations and other ways to be involved!

The Dean of Students Office is committed to the students' "life outside the classroom" by providing programs and services that promote campus safety, health and wellness, student engagement, leadership and school spirit. The Office is concerned for the general welfare of all students and supports them in reaching their academic and personal goals while enjoying the Ragin'

Dean of Students Office

Martin Hall 211
(337) 482-6276

www.louisiana.edu/Student/Dean
Patricia Cottonham, Dean



Cajun Experience.

Student Union

(337) 482-6939

<http://studentunion.louisiana.edu/>
Anthony Daniel, Director

The Student Union serves as the focal point of campus life outside the classroom. The Union is where students come to meet friends, relax, and participate in campus activities. The facility comprises three buildings centered around Cypress Lake. Coronna Hall houses student organizations' offices, including the Student Government Association (SGA), on the second floor.

Guillory Hall contains a coffee

shop, lounge area, computer lab area and a copy center. The Student Union Building houses meeting rooms, study rooms, lounges, ballroom, cafeteria, snack bar, theatre, information desk, Ticketmaster, art gallery, telephone facilities and the University Bookstore.

University Program Council

Student Union 206
(337) 482-6940

<http://studentunion.louisiana.edu/university-program-council/>

The University Program Council is the organization responsible for presenting specific programs of a cultural, social or recreational nature to the university ▶

community. The council is composed of the student chairman of each of the three standing committees: African-American, Events and Spirit & Traditions.

The council also participates in the planning of campus-wide activities such as Lagniappe Day and Homecoming.

Office of Greek Affairs

Martin Hall 211
(337) 482-6272
www.ulgreeks.com
Dana Bekurs, Associate Dean of Students

Greek life at UL Lafayette provides an opportunity for men and women to add

a valuable dimension to their college experience while developing close bonds of brotherhood and sisterhood. Twenty-one national sororities and fraternities constitute the Greek system. All programs and services for their respective groups are coordinated by three governing councils: Panhellenic (NPC), National Pan-Hellenic (NPHC) and Interfraternity Council (IFC). Greek life promotes the personal development of students with an emphasis on academics, responsible citizenship, community service and the cultivation of cultural, social and leadership skills. Panhellenic sororities and IFC fraternities hold formal recruitment for new membership and NPHC sororities and fraternities hold deferred recruitment. ■



Other Helpful Student Services

Financial Aid

Foster Hall 106
(337) 482-6497
<http://admissions.louisiana.edu/financial-aid/>
Cindy Perez, Director

The Office of Financial Aid assists eligible students in obtaining federal and state financial aid (including TOPS). Please remember that students must

reapply for financial aid each year by May 1.

Scholarships Office

Martin Hall 260
(337) 482-6515
<http://admissions.louisiana.edu/scholarships/>
Adele Bulliard, Director

The Scholarship Office is responsible for awarding and administering all academic scholarships funded by the university and the UL Lafayette Foundation. The Scholarship Office also handles



“outside scholarships.” Currently, there are more than 3,400 such scholarships, totaling approximately \$4,500,000.

Parking & Transit

Olivier Hall 100
(337) 482-6858
<http://park.louisiana.edu>
Simon Broussard, Director

Parking and Transit provides parking for faculty, staff and students residing on the campus of UL Lafayette. Residence hall students who plan to have a vehicle on campus qualify to purchase permits prior to the first day of class each semester. Commuter students may sign up for the parking lottery prior to the beginning of the fall and spring semester. If your student’s name is drawn, they are eligible to purchase a parking permit for a semester. Visit <http://park.louisiana.edu> to register online for the parking lottery.

Students are encouraged to park at Cajun Field for free and utilize the transit system for free to get to main campus. The transit system runs 7:00 a.m. – 7:00 p.m. Monday through Thursday and 7:00 a.m. – 6:00 p.m. on Friday. Free shuttle service is also available to students from 5:00 p.m. – 12:00 a.m. Monday through Friday and 12:00 p.m. – 12:00 a.m. Saturday and Sunday. Contact Harris Hall for pick up at (337) 482-6936.

Student Housing

Student Union 240
(337) 482-6471
<http://housing.louisiana.edu>
Lisa Landry, Director

Living on campus adds a special dimension to a student’s overall college experience. Students who live on campus can take advantage of amenities such as tutorial services, study groups, parking on campus, residence hall socials and ►

evening campus safety escort van service. All halls are equipped with reception areas, study rooms, microwaves, cable television, local phone service with voice mail capabilities and computer

rooms. Living on campus is the most convenient living arrangement for students. On campus housing includes room costs, food, electricity, phone, cable, a health plan and much more!

Cajun Card Services

Student Union 130
(337) 851-2273
<http://cajuncard.louisiana.edu>
Lucien Gastineau, Director

The Cajun Card is your student's all-in-one ID card and their key to student life here at UL Lafayette. It functions as their student ID card, library card, building access card, meal card, copy card, debit card, and ticket to Ragin' Cajun home games. Students and parents can deposit money onto the card which can later be used to make purchases at campus and off-campus locations using Cajun Cash. Please visit the website for a list of campus and off campus locations that currently accept Cajun Cash.

Lost or stolen cards should be reported to the Cajun Card Office.



University of Louisiana at Lafayette

Office for Campus Diversity

Martin Hall 243
(337) 482-6464
<http://diversity.louisiana.edu>
Dr. Jennifer Jackson, Assistant to the President

The Office for Campus Diversity was established with the expressed purpose of advocating and promoting an environment of inclusiveness by attracting and maintaining a diverse student body, faculty and administrative staff with continued focus on promoting a quality and diverse learning and social environment.

Office of International Affairs

413 Brook Avenue
(337) 482-6819
<http://oia.louisiana.edu>
Rose Honegger, Director

The Office of International Affairs serves the more than 750 international students attending UL Lafayette. The most important function of this office is to provide international students, faculty and staff the assistance needed to adjust to life here in the U.S., whether it be cultural, academic, financial, immigration or personal. The office coordinates all the University programs for international students and faculty.

Office of Student Life & Conduct

Martin Hall 223
(337) 482-6373
(337) 482-6447 (Dean on Call)
www.louisiana.edu/Student/Personnel
Greg Zerangue, Director

The Office of Student Life & Conduct initiates and implements disciplinary procedures in accordance with the Code of Student Conduct. It is also the responsibility of the office to coordinate residence hall policies and programs

and administer the Resident Assistant program in the residence halls.

Student Life & Conduct also coordinates the "Dean-on-Call" program. A Dean from Student Life may be contacted 24 hours a day to assist students in emergency situations.

Career Services Center

Conference Center 104
(337) 482-1444
<http://careerservices.louisiana.edu>
Kim Billeau, Director

The mission of the Career Services Center is to assist UL Lafayette students and alumni in developing and implementing their career goals by providing skill enhancement, career and employer information and ▶



STUDY ABROAD

SUMMER SESSIONS

Contact: Patricia Mouillé
Griffin Hall 437
(337) 482-5438

studyabroad@louisiana.edu

studyabroad.louisiana.edu

**SEE THE WORLD
AS YOU'VE NEVER
SEEN IT BEFORE**



maintaining quality university-employer relationships which provide a link between students and potential employers.

Services offered at Career Services

- Online Job Listings (part-time, full-time, co-op, internships, & summer).
- On-campus interviews
- Career Days
- Employer Panels & Seminars
- Resume Assistance
- Etiquette Dinners

Office of Disability Services

Conference Center Room 126
(337) 482-5252
<http://disability.louisiana.edu>
Dr. Carol Landry, Director

The Office of Disability Services is committed to helping eliminate barriers by providing services and accommodations for students with physical, learning or emotional disabilities to guarantee their full participation in university life.

Services provided by ODS

- Special testing accommodation
- Priority scheduling
- Note-taking assistance
- Special parking
- Elevator access
- Sign Language Interpreters

Students needing assistance through ODS must register with the office and present an accommodation letter to faculty in order to receive academic accommodation.

Study Abroad

Griffin Hall 437
(337) 482-5438
<http://studyabroad.louisiana.edu>
Pat Mouille, Coordinator

Study Abroad provides students an opportunity to earn course credit while studying in a foreign country. Various programs are coordinated during the summer semester, including long-standing

programs to Paris, France; Florence, Italy; London, England; and many others.

Ragin' Cajun Athletics

The University is home to Louisiana's Ragin' Cajuns, a member of the National Collegiate Athletic Association (NCAA), competing at the highest level of intercollegiate athletics (Division I). UL sponsors eight men's sports (football, basketball, baseball, cross country, golf, tennis and indoor and outdoor track & field) and eight women's sports (soccer, volleyball, basketball, softball, cross country, tennis and indoor and outdoor track & field).

Ragin' Cajuns athletics provides a fun, safe and affordable entertainment experience for all those in attendance. Students receive free admission into all home sporting events by showing their current student ID. In addition, students may purchase a companion ticket at a reduced price.

At most home sporting events, the University Program Council (UPC) sponsors student contests and promotions which offer students in attendance the chance to win prizes. The UPC office also offers a complimentary tailgating area for students at home football games. Ragin' Cajuns tailgating features live music, great food and one-of-a-kind Cajun hospitality. It's some of the best tailgating in the South and is a time-honored experience that's cherished by all! ■



UNIVERSITY
OF
LOUISIANA
Lafayette





University Bookstore

Located on campus in the UL Student Union, University Bookstore is your source for all textbooks, school and office supplies, Ragin' Cajuns apparel, gifts, and gear. One-stop convenience is the hallmark of University Bookstore.

Having the right materials at the right time and at the right price can contribute to a student's success. At University Bookstore, students find a variety of educational materials and a variety of services to assist in their academic success. More than 4,500 required and recommended new and used textbooks are immediately available, along with supplemental materials, including general reference and study guides. You'll find a large inventory of used textbooks,

saving 25 percent off your textbook bill. Shopping for your educational supplies is easy at University Bookstore, where you will find an assortment of school, office, art, architecture, and engineering supplies. Need something special to show your Ragin' Cajun spirit? Come browse through our large selection of officially licensed Ragin' Cajuns clothing and gifts. Other convenient services include Textbook Buyback, Grad Expo, and free special order programs. As a self-supporting campus enterprise, University Bookstore does not receive state funding or student tuition fees. Our profits are reinvested to support student facilities, programs, scholarships and initiatives. We know you have many choices when selecting school supplies and materials. Thank you for choosing a campus-run bookstore that supports the local economy. ■

Tuition & Fee Payments

Students are assessed tuition & fees for each semester they enroll on campus. Tuition is usually assessed by mid-July for the Fall semester and after course registration for Spring and Summer Semesters.

Tuition & Fees must be paid by the designated fee payment deadline for each semester or students will be dropped from their classes. Students should ensure that they have submitted all required paperwork (for recipients of financial aid, scholarships, assistantships, fellowships, National Guard, etc.) well in advance of this deadline.

For students receiving TOPS, Financial Aid, Scholarships, or other forms of financial assistance, it is important to check the statement of account online. TOPS and other forms of assistance usually do not cover all costs associated with a semester.

TUITION & FEES PAYMENT DEADLINES 2011-2012 ACADEMIC YEAR

Summer Session 2011: May 26, 2011

Fall Semester 2011: August 10, 2011

Spring Semester 2012: January 3, 2012

****Subject to change. Please check the Bursars home page at www.louisiana.edu/business/bursar for up-to-date information, including potential policy changes and early payment deadlines. ■**

Tuition & Fees Payment Methods

HAND DELIVERED PAYMENTS

Cash, Check (payable to UL Lafayette) in the Student Cashier Center, Coronna Hall.

MAIL-IN PAYMENTS TO:

**UL Lafayette Student Cashier Center
PO Box 44444
Lafayette, LA 70504-4444
Check/Money Order payable to:
UL Lafayette**

*Please indicate the student's full name and student ID number on the check/money order. Mail-in payments must be received by 08/09/11 to satisfy the Fall 2011 Tuition & Fees payment deadline and prevent scheduled classes from being dropped.

CREDIT CARD PAYMENTS

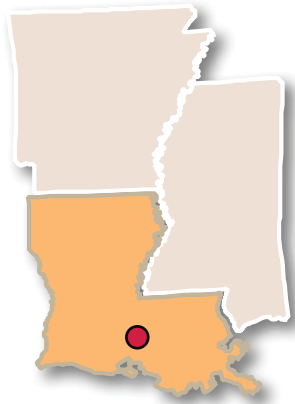
Online Payment Gateway via (ULink Portal) accepts MasterCard, American Express, and Discover. The Online Payment Gateway also accepts payments by E-Check and E-Savings.

ALL INCLUSIVE PRICING?
NOW THAT MAKES BUSINESS SENSE.

Minutes from UL,
the Airport &
Downtown Lafayette!

WINGATEHOTELS.COM
1.800.228.1000

702 E Kaliste Saloom Rd
Lafayette, LA 70508
(337) 234-3700
(866) 434-0298



Welcome to Lafayette!

**Ça fait chaud (it's hot) ...
Lagniappe (a little something extra) ... C'est bon (that's good).**

No matter how you say it, the culture in South Louisiana, like our dialect, is seasoned with a taste of Cajun French and Creole. Lafayette is a flavorful combination of spirited festivals, savory cuisine, outdoor activities, breath-taking scenery and a rich history.

Lafayette is at the heart of Acadiana, an area known for its Cajun and Creole cultures and the birthplace of unique types of cuisine and music. You'll find that our distinct brand of fun just grabs hold of people. With our renowned Cajun and Zydeco music, distinctive cuisine, world-class museums, unique cultural attractions and festivals, there is literally something



The Cypress Island Preserve, which includes the focal point of Lake Martin, is situated between Breaux Bridge and Lafayette, Louisiana. Photo by Eric Lindberg

happening every week. Lafayette has long been known as a Mecca for great Cajun cuisine, toe-tapping Cajun and Zydeco music, and cultural attractions. With the opening of three world-class art museums in recent years, a professional symphony orchestra, and numerous art galleries, arts-related events and performances, Lafayette can offer a plethora of local culture and cultured experiences. From the dizzying spin of a Cajun two-step to the graceful swirl of the prima ballerina, from funky Cajun dance hall beats to the violin concertos in all their symphonic glory, from spicy boiled crawfish to the finest in Creole dining, Lafayette has the best of both worlds.

Lafayette is conveniently located at the intersection of I-10 and I-49 and is only a 2 1/2 hour drive from New Orleans. The Lafayette Regional Airport hosts

daily flights connecting to Houston, Dallas, Memphis and Atlanta.

In Lafayette, we'll make you feel right at home – whether you prefer to dance at a festival or catch a sunset over the cypress trees. With Zydeco rhythms, Cajun and Creole

flavors, Louisiana scenery and Southern hospitality you'll agree – there's no place like Lafayette.

For more information stop by the Visitors Center, 1400 NW Evangeline Thruway, or visit at www.Lafayette.travel. ■



Where Comfort Meets Style In Lafayette...

1801 W. Pinhook Road
Lafayette, LA 70508
337.233.8120

290 Spacious Rooms
Free Wireless Internet
Courtesy Airport Shuttle
Cable Satellite Television
3 Miles From the Airport
Sparkling Outdoor Swimming Pool
Extraordinary In-Room Dining Services
Equipped with Conference and Banquet Space
Access to Fitness Center, Fine Dining, and Bar

Visit us at www.crownplaza.com/lafayettesouth



LIVE

College is all about new experiences. Endless possibilities. And when you live on campus, you're given a front-row seat to it all. Quick access to academic halls, Dupré Library, campus dining and social events. All the educational resources students need to reach their full potential at arm's reach. And with the University Police Department office just moments away from all residence halls, the experience will be a safe one. **Welcome to the one, true university housing option.**

Legacy Park Apartments is an on-campus residential community that offers all the amenities you'd expect from a traditional apartment complex, only well within reach of everything UL Lafayette has to offer.

Legacy Park Apartments Feature:

- Private bedrooms and baths
- Fully furnished units
- Full-service kitchens
- Washer/dryer combination in each apartment
- Gated parking and card access to all entrances
- Paid utilities
- Cox Communications Extended Cable
- Available in 1-, 2- or 3-bedroom/bath units

Taft Street Hall

Opening its doors for the Fall 2011 semester, UL Lafayette's newest residence hall will offer easy access to campus amenities with all the comforts of apartment-style living. Floor plans were designed to maximize double occupancy comfort — with private bedrooms, closets and individual temperature controls — but single-occupant suites also are available. Featuring fully furnished units, swipe card access and 24-hour security, consider this scenic, centrally located spot your new home away from home. Look for our newest residence hall in the Taft Street area.

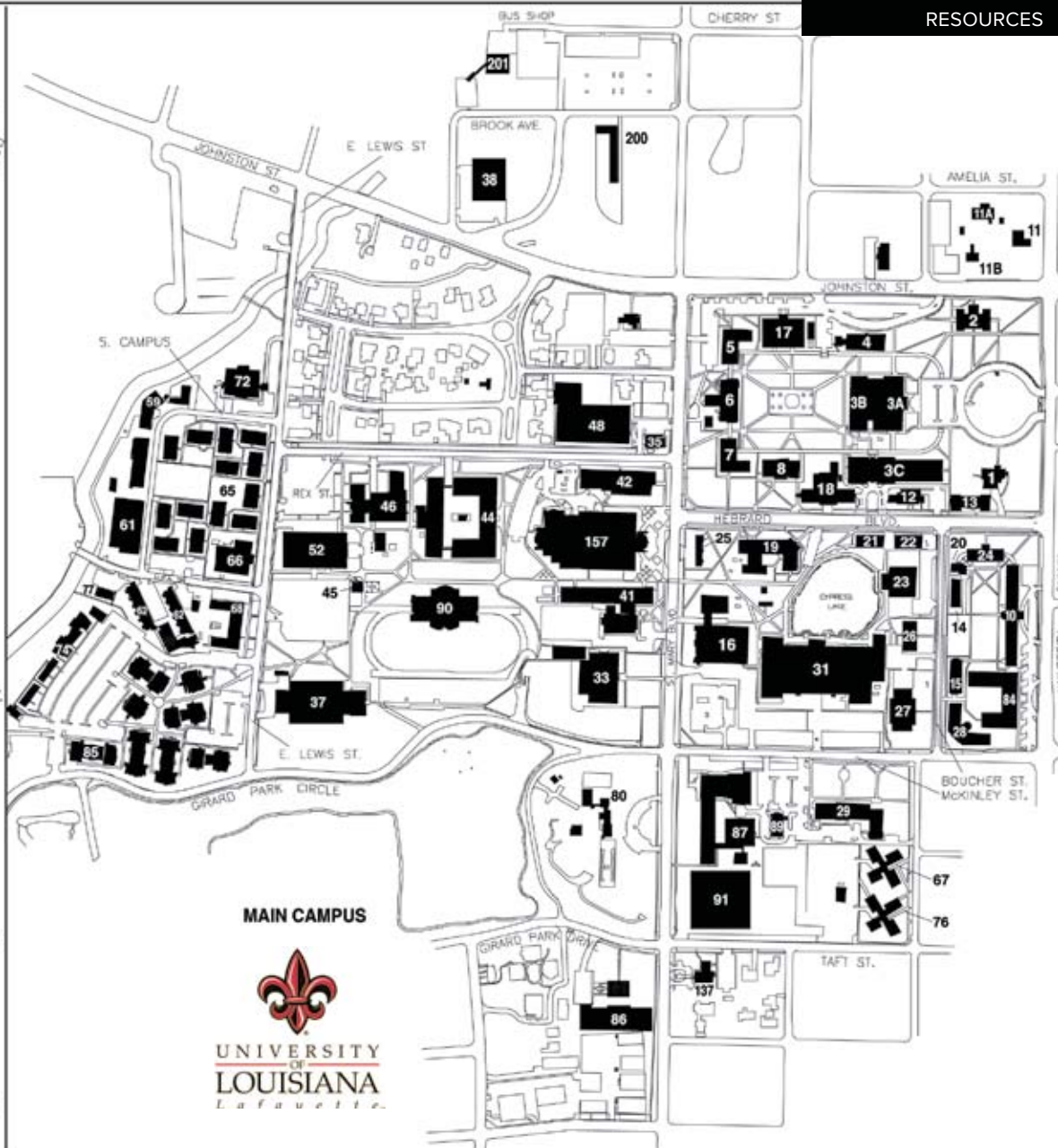
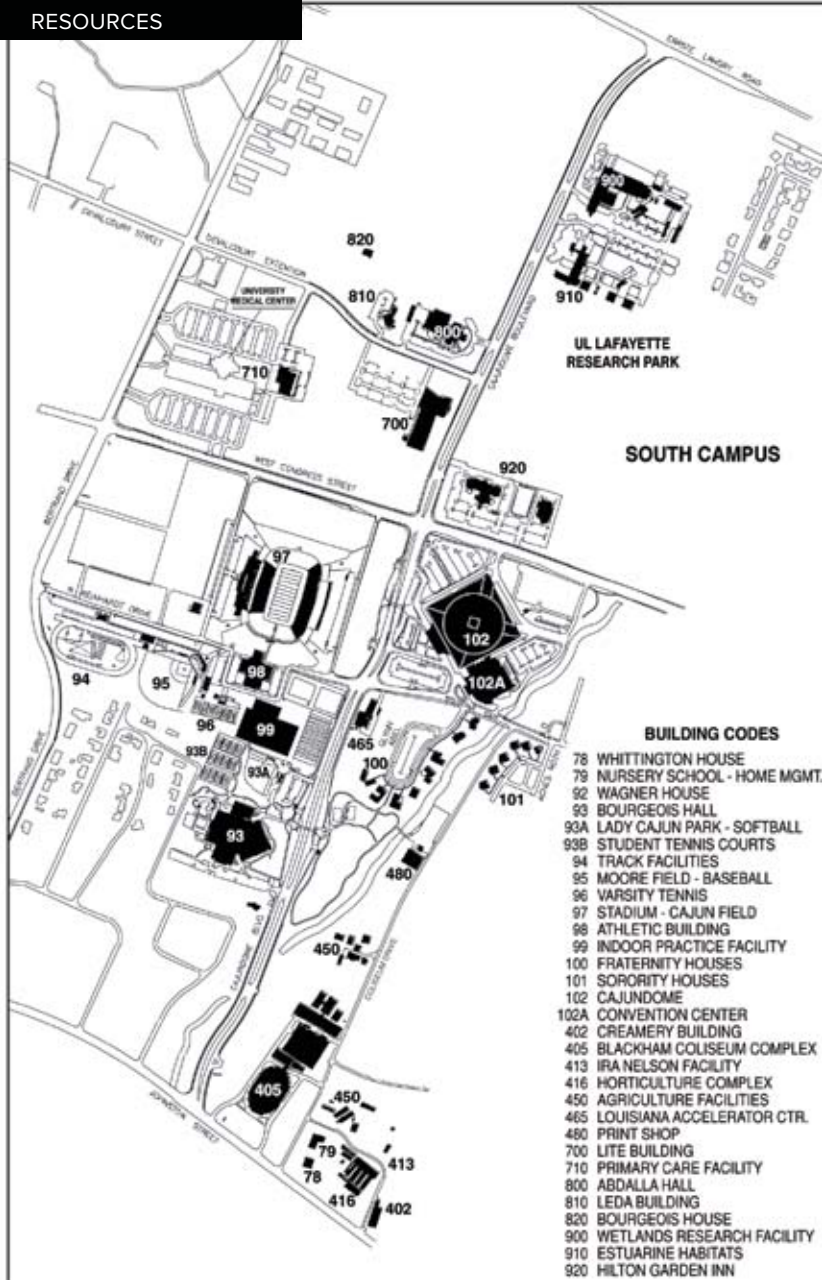
Amenities

- Individual temperature controls
- Private bathroom for every two suite-mates
- Utilities/cable TV included
- High-speed Internet with Wi-Fi access
- Convenient parking
- Individual/group study rooms
- Resident lounges with online gaming
- Handicap-accessible units



UNIVERSITY
OF
LOUISIANA
Lafayette

For more information about on-campus living, contact the Housing Department of the University of Louisiana at Lafayette at 337-482-6471, or visit housing.louisiana.edu.



1 PRESIDENT'S HOME	10 BAKER/HUGER HALL	18 O.K. ALLEN HALL	28 HARRIS HALL	44 MADISON HALL	66 ART BUILDING	87 ANGELLE HALL
2 GIRARD HALL	11 ROY HOUSE	19 BURKE HALL	29 HAMILTON HALL	45 SNACK HUT	67 BANCROFT HALL	89 CREDIT UNION
3A MARTIN HALL	11A HAWKINS HOUSE	20 ALUMNI HALL	31 STUDENT UNION	46 GRIFFIN HALL	68 PARKER HALL*	90 ACTR BUILDING
3B F.G. MOUTON HALL	11B SOULIER HOUSE	21 OLIVIER HALL	33 E.K. LONG GYM	48 CONFERENCE CENTER	72 UL DAY CARE	91 TAFT ST. PARKING FACILITY
3C MOODY HALL	12 BITTLE HALL	22 CORONNA HALL	35 BANK ONE BLDG.	52 ROUGEOU HALL	74 VET VILLAGE	137 UL FOUNDATION
4 FOSTER HALL	13 DeCLOUET HALL	23 GUILLORY HALL	37 FLETCHER HALL	59 CENTRAL RECEIVING	76 DENBO HALL	157 DUPRE LIBRARY
5 MOUTON HALL	14 BUCHANAN HALL	24 RANDOLPH HALL	38 CONT. ED. CENTER	61 MAINTENANCE FACILITY	80 ALUMNI CENTER	200 INTERNATIONAL BLDG.
6 STEPHENS HALL	15 EVANGELINE HALL	25 JUDICE-RICKELS HALL	41 BILLEAUD HALL	62 STOKES A & B	84 BONIN HALL	201 MILITARY SCIENCE BLDG.
7 BROUSSARD HALL	16 WHARTON HALL	26 SAUCIER CLINIC	42 MONTGOMERY HALL	63 FOOD COURT	85 LEGACY PARK	
8 LEE HALL	17 DOUCET HALL	27 McLAURIN GYM	43 FRENCH HOUSE	65 CAJUN VILLAGE	86 UNIVERSITY ART MUSEUM	



Important Dates

SOUL Camp 2011 August 11 – 14, 2011

SOUL Camp is an extended, experiential orientation program that will provide new students an opportunity to learn more about the spirit and tradition of UL while also continuing to build friendships and leadership skills through community service and other activities. SOUL is an acronym for Service, Outreach, Unity, & Leadership. Issues and themes of camp will pertain to the development and understanding of: Time management, Career Development, Campus Involvement, Academic

Balance, Leadership Skills, Community Engagement, Diversity & Multiculturalism, Health & Wellness, and University Pride.

Camp costs \$150.00 and includes 4 days of meals, lodging, a camp t-shirt, and other camp costs. For more information, or to register, visit www.ulorientation.com/soul-camp

Housing Move-In Dates Legacy Park – August 15, 2011 Residence Halls – August 19-20, 2011

**Freshman First Down
September 17, 2011**
The University Program Council (UPC), a student organization that plans campus events, created Freshman First Down to give incoming freshmen a sense of belonging. Now a tradition on campus, UPC is offering the family of every incoming freshman two (2) complimentary football game tickets with additional tickets available at a discounted price. All students get in FREE with a valid UL Lafayette ID. We will be sending out more information prior to the start of the fall semester. **GEAUX CAJUNS!** ■

A new way to get your textbooks
Save up to half off, up front
Why buy when you can rent online? Don't stand in line!
Valet pickup without leaving your car
Or have them shipped to your door, or pick-up in store.
Local company, local service since 1997
Get your books first-day and defer payment for a month
The right books for the right class — guaranteed
Matching any physical store that rents textbooks — guaranteed

**TEXTBOOK RENTALS
EVOLVED**
flipthatbook.com

Textbook Rentals
1119 General Mouton Ave.
Lafayette, LA 70501
337-236-3678
FLIPTHATBOOK@AOL.COM

2011-2012 Academic Calendar

SUMMER SESSION 2011

Tuition & Fees Payment Deadline	Thursday, May 26, 2011
First day of Classes	Monday, June 6, 2011
Last day of Classes	Wednesday, July 27, 2011
Final Exams	Thursday, July 28 – Friday, July 29, 2011

FALL SEMESTER 2011

Tuition & Fees Payment Deadline	Wednesday, August 10, 2011
First day of Classes	Monday, August 22, 2011
Last day of Classes	Friday, December 2, 2011
Final Exams	Monday, December 5 – Friday, December 9, 2011

SPRING SEMESTER 2012

Tuition & Fees Payment Deadline	Tuesday, January 3, 2012
First day of Classes	Wednesday, January 11, 2012
Last day of Classes	Friday, April 27, 2012
Final Exams	Monday, April 30 – Friday, May 4, 2012

*Subject to change. Please check the Bursars home page in fall 2011 for most up-to-date information, including potential policy changes and early payment deadlines.



This Guide brought to you by these

Proud Sponsors of ULL

HOTELS & ACCOMMODATIONS

Courtyard by Marriott
Please see ad below.

Crown Plaza Lafayette Airport
Please see ad on p. 31.

Day Inn Lafayette/University
Please see ad on p. 26.

Fairfield Inn & Suites
Please see ad on p. 9.

Holiday Inn Lafayette
Please see ad on p. 16.

Red Roof Inn Lafayette
Please see ad on p. 13.

Staybridge Suites Lafayette
Please see ad on p. 12.

Wingate by Wyndham Lafayette Airport
Please see ad on p. 29.

HOUSING

Bayou Oaks
Please see ad on adjacent page.

Cagan Management Group, Inc.
Please see ad on back cover.

Campus Crossing Apartments
Please see ad on inside front cover.

The Edge at Lafayette
Please see ad on p. 7.

The Quarters
Please see ad on adjacent page.

UL Lafayette Housing
Please see ad on p. 32.

University House - Acadiana
Please see ad on p. 3.

SHOPPING & SERVICES

Dell
Please see ad on p. 3.

Textbook Rentals
Please see ad on p. 36.

STUDENT SERVICES

Cajun Card
Please see ad on p. 10.

ULL Study Abroad Program
Please see ad on p. 25.

To be featured in the guide, please contact University Parent Media Sales Consultant Jon Hydeman at (866) 721-1357, or send an e-mail to ask@universityparent.com



Welcome UL
Parents & Families!

Call 1-800-769-8857 and ask for the
University of Louisiana at Lafayette
corporate rate or go online to
www.marriott.com/lftcy and enter ULL
in the corporate/promotional code box.



(337) 232-5005
214 E. Kaliste Saloom Road
Lafayette, LA 70508
www.marriott.com/lftcy

Love WHERE YOU LIVE!

BAYOU OAKS

- Free Hot / Cold Water
- Washer / Dryer Connections
- Laundry Facilities
- Gatehouse Director
- Fitness Center / Tanning Bed
- Plush Carpeting
- Private Patios / Balconies
- Vanity / Walk-In Closets
- Energy Efficient Mini Blinds
- 3 Miles from Campus!

Bayou Oaks has spacious one and two bedroom apartment homes (3, 6, 9 & 12 month leases) with amenities and community features designed to make living here the perfect choice. Prices start at \$585.00. Mention this ad for student special!

330 Feu Follet - Lafayette, LA 70508 • (337) 237-8348 • www.bayouoaksapartment.com

THEQUARTERS.COM

WALKING DISTANCE TO CAMPUS

LARGEST FLOORPLANS AVAILABLE

FULLY FURNISHED

SUPERB STUDENT LIVING!

501 STEWART ST.
337.237.7575

THE QUARTERS

NOW LEASING FOR FALL!

UNIVERSITY PARENT Brings You

the Online

UL Lafayette

GUIDE

This online resource for parents features the best places to

stay eat shop
explore relax visit
unwind and more...

www.universityparent.com/lalaf

Or find us with your mobile device!
Simply download a QR scanner app to your mobile device and scan the QR code to the right!

www.universityparent.com/lalaf

Experience The Cagan Difference!



1 Park Place Apartments

100 Belle Fontaine Dr
Lafayette, Louisiana 70506
parkplace@cagan.com

2 Gallery Apartments

315 Guilbeau Rd
Lafayette, Louisiana 70506
gallery@cagan.com

3 Whispering Oaks Apartments

550 Eraste Landry Rd
Lafayette, Louisiana 70506
whisperingoaks@cagan.com

4 Eagle Run Apartments

810 S College Rd
Lafayette, Louisiana 70503
eaglerun@cagan.com

5 Beau Chenes Apartments

2509 Johnston St
Lafayette, Louisiana 70503
beauchenes@cagan.com



**Rents that
won't bust
your
budget!**

- Our residents are our first priority

- Play the Cagan Game

(Exclusively for Cagan residents)

See why "Money Grows On Trees"

- Cagan Club Card

(Exclusively for Cagan residents)

Our residents enjoy discounts at
many businesses

For more information please call or email:

(337)233-8445

lafayetteapts@cagan.com