

UNIVERSITY PARENT
GUIDE



2012 | **Immaculata University**

CAMPUS RESOURCES – LOCAL INSIGHT – HELPFUL INFORMATION



WESTGATE VILLAGE APARTMENTS

WESTGATE VILLAGE HAS BECOME A POPULAR HOME TO THOSE WHO ENJOY THE CONVENIENCE OF THE SUBURBS AND EASY ACCESSIBILITY TO KING OF PRUSSIA, MAIN LINE AND EXTON. OUR SPACIOUS CHARMING FLOORPLANS OFFER SOMETHING FOR EVERYONE, WE LOOK FORWARD TO YOUR VISIT!

- | | | |
|---------------------------|---|---|
| Modern-Style Living | Professional Service Team | Gas Heat/Central Air Conditioning |
| Spacious Floorplans | State-of-the-Art Fitness Center | Feline Friendly |
| Washer/Dryer in each home | Sparkling Pool & Playground/Tennis Courts | Close to shopping, dining & entertainment |
| Private Entrances | Community Clubhouse w/ Free Internet | Location, Location, Location! |
| Patio/Balcony | Picnic Area with grills | |

333 Lancaster Ave • Frazer, PA 19355 • 610.647.4770
www.firstmontgomerygroup.com • westgate@fmgnj.com



contents

6 | Immaculata University Guide

Comprehensive advice, information for campus success

- 6 | Welcome to Immaculata!
- 7 | Overview
- 8 | Scholarship and Grant Program
- 10 | Immaculata and the Arts, Academic Success Center
- 11 | Department of Athletics, Intramurals
- 12 | Campus Life
- 13 | Student Organizations
- 14 | New Students "Make Their Mark" at NSO

15 | Resources

Must-have knowledge to navigate your way

- 15 | Where is Immaculata?

This Guide made possible by these

Proud Supporters of Immaculata!

FINANCIAL

First Niagra
Please see ad on p. 13.

HOTELS

Hampton Inn
Please see ad on p. 10.

HOUSING

Westgate Village Apartments
Please see ad on p. 2.

SHOPPING

Dell
Please see ad on p. 9.

Americas Best Organics
Please see ad on p. 16.

It Makes Me Giggle
Please see ad on p. 16.



UNIVERSITY PARENT CONNECTION



**Becky Bowlby, Director of Admissions
Immaculata University**

The College of Undergraduate Studies
1145 King Road, PO Box 642
Immaculata, PA 19345
(877) 42-TODAY
www.immaculata.edu

About Our Guides

University Parent Media works closely with institutions around the country to bring together the most relevant, timely information into one all-inclusive resource.

We have published this guide with the mission of helping you easily navigate the University and its surrounding community. Ultimately, we hope these resources help nurture your connection and involvement in your student's college years!

Make the Most of Your Parent Guide

- Hang on to your Guide! Inside you'll find information that's useful all-year long, including important phone numbers, web sites and calendars.
- Store your copy in a purse or glove compartment for convenient reference.
- Pass it along to parents of prospective college students to promote the school.
- Please recycle when finished!
- Discover more content, tips and local business information by visiting us online at: www.universityparent.com/immaculata

University Parent Media
3800 Arapahoe Avenue, Suite 210
Boulder, CO 80303
Phone: (866) 721-1357
Email: ask@universityparent.com

PUBLISHER
Sarah Schupp

VP OF OPERATIONS
Jon Saints

SALES REPRESENTATIVES
Allison Black
Rebecca Boozan
Scott Griesser
Sharon Haddad
Jon Hydeman
Mimi Olin
Emily Rayes
Henry Springer
AJ Virostek

PRODUCTION DEPARTMENT
Grace Cassara
Eric Hosmer
Meg Steinborn

OFFICE MANAGER
Linsey Straugh

DESIGNER
Mark Hager

FOLLOW US ON:

 facebook.com/collegeparents

 twitter.com/4collegeparents



The presence of Immaculata University logos and marks in this Guide does not mean the school endorses the products or services offered by advertisers in this Guide.

Advertising Inquiries:
(866) 721-1357
ads@universityparent.com

©2011 University Parent Magazines, Inc.

UNIVERSITY PARENT

Brings You

the Online



IMMACULATA GUIDE

This online resource for parents features the best places to

shop
eat
relax
stay
unwind
play
visit
explore
and more...

www.universityparent.com/immaculata

Or find us with your mobile device!
Simply download a QR scanner app to your mobile device and scan the QR code to the right!





Welcome to Immaculata!

The Immaculata experience begins with your first visit to our picturesque and historic campus. Sitting atop a hill in scenic Chester County, the history of the land our campus rests on dates back to the Revolutionary War and the fabled Battle of the Clouds. Occupying nearly 400 acres, our campus is expansive enough to enjoy open spaces yet small enough to contribute to the family-like atmosphere that permeates the University.

Immaculata University is however much more than magnificent stone buildings and beautiful rolling acres. Our faculty are here to teach and teaching is their primary focus. Our student to faculty ratio is 11:1 and most classes have 20 or fewer students. In order to support the exceptional experience in the classroom, Immaculata has made a significant investment in technology to further prepare our graduates to take a meaningful place in society upon graduation.

In addition to all of the facilities and technology, what sets Immaculata apart are her people. Every member of the Immaculata University community considers it part of his or her job to see that our students are supported to achieve success.

The college experience is of course so much more than classes and computer

labs it's also about life on a college campus. Whether you commute to school or reside in one of our residence halls on campus, there is always something going on. Students participate in 16 Division III athletic teams or are actively involved in intramural sports, theatrical productions, or community service. Whether your talents are literary and you write for the school newspaper or more performance oriented and you play in one of our many musical groups, there is always something to do here.

We encourage you to read on and learn more about everything Immaculata University has to offer you. After you have finished reading and visited our campus, we are certain you too will want to "Believe in Immaculata."

Best wishes,
The Office of Admission ■

OVERVIEW

Immaculata University was founded in 1920 and is located in historic Chester County, Pennsylvania, on a picturesque campus, about 20 miles from Philadelphia. The university currently enrolls over 1,000 undergraduate students and 3,000 adult and graduate students from 27 countries and 17 states who have the opportunity to study in more than 60 undergraduate majors and minors.

QUICK FACTS

Institutional control: Private
School type: Four-year
Academic calendar: Semesters
Religious affiliation: Roman Catholic
Average class size: 14
Student-faculty ratio: 10:1

COSTS AND AID

Current Undergraduate tuition (academic year): \$28,850
Room and board (academic year): \$11,460
Merit based scholarships offered: Yes
Grants offered: Yes
Loans offered: Yes
Work-study programs offered: Yes, both Federal and institutional
Co-ops/internships offered: Yes

ADMISSION

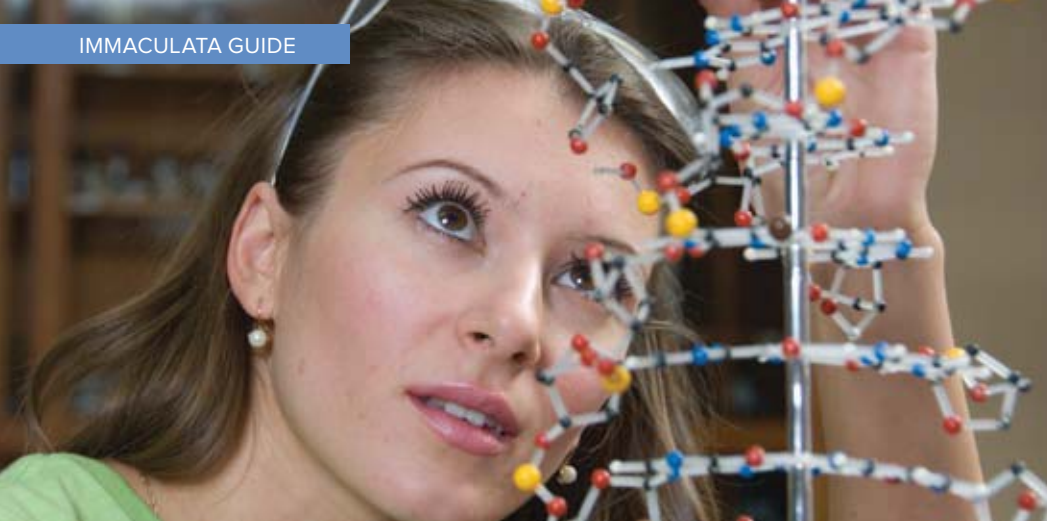
Average GPA: 3.2
Mean ACT score: 22 with writing
Mean SAT score: 1500 with 3 scores

Essay: 250 word essay is required
Letters of recommendation: 2 letters are required
Application deadline: Rolling except for Nursing and Thomas Jefferson University Partnership Programs — **deadline is December 15**
Application fee: \$35. Applying is free if you apply online at www.immaculata.edu OR it is always free if you use The Common Application at www.commonapp.org

Student Life

76% of Immaculata University students live in campus housing. Student-athletes compete on 16 NCAA Division III teams as part of the Colonial States Athletic Conference. Immaculata University also offers more than 80 clubs and campus organizations such as Greek life, student government, theater, and intramurals. ■





Scholarship and Grant Program

The scholarship and grant program is designed for full-time day students in the College of Undergraduate Studies.

Presidential Scholarship

This scholarship is awarded to a select number of students with a record of academic excellence. Students are evaluated on the basis of GPA, class rigor, standardized test scores, class rank (if applicable) and recommendations. All students who meet the criteria for the Presidential Scholarship will be interviewed by the Scholarship Committee. Students must maintain a 3.25 GPA for the scholarship to be renewed each year. 5 scholarships are awarded annually. First time freshmen applicants only. Amount of Full-time undergraduate annual tuition.
Deadline: January 15.

Dean's Scholarship

This scholarship is awarded to students on the basis of GPA, class rigor, standardized test scores, class rank (if applicable) and recommendations. Students must maintain a 3.0 GPA for the scholarship to be renewed each year. Open to freshmen, transfers and international students.

Amount range \$12,000 to \$16,000.

Faculty Grant

This scholarship is awarded to students after review by the Scholarship Committee. GPA, test scores, class rank and recommendations are used as the basis for review. Students must maintain a 2.5 GPA for the scholarship to be renewed each year. Open to freshmen, transfers and international students. Amount range \$7,000 to \$11,500.

IU Grant

This grant is offered to students after application review and acceptance to the University. Students must maintain a 2.0 GPA for the scholarship to be renewed each year. Open to freshmen, transfers and international students. Amount range \$5,000 to \$6,500.

Leadership Scholarship

This scholarship is granted to students who demonstrate leadership through activities in school and in the community.

A resume of service and leadership must be submitted along with the application packet in order for a student to be considered. Leadership in athletics will be considered if a student is a captain or co-captain, but this is not an athletic scholarship due to the University being a Division III school in the NCAA. Awarded to 20 students and is open to both freshmen and transfers. The award is renewable annually provided the student participates in activities during their four years at the University. Amount \$2,500 per year.

IHM Liaison Grant

Grants are awarded to freshman students who have been referred to the University by a designated IHM liaison. Amount \$1,000 per year.

Alumnae(i) Endorsement Grant

This award will be given to any student who has the Grant Application signed

by an alumna(us) of the University. This is a one-time only grant and is available to both freshmen and transfers. Amount \$1,000 per year. Deadline: March 1.

Sibling Grant

This award will be granted to siblings who are enrolled in Immaculata University at the same time for the duration of the time that they are enrolled simultaneously. The amount granted to each student will be a 10% reduction in tuition.

Application Process

The process of review for scholarship awards will occur simultaneously with the review of applications. Once a student has applied for admission and is accepted, he/she will be reviewed for the level scholarship that they meet based upon the GPA, test, rank, recommendations and any other criteria established by Enrollment Management. ■

Welcome Immaculata University Students!
Buy select Dell PCs, get an Xbox 360® 4GB.*


The power to do more


XBOX 360

Students only, get an Xbox 360® when you purchase select Dell PCs with Windows 7® for \$699.99 or more.*




*XBOX & \$699.99 system bundle offer only valid for actively enrolled high school, college, or university students or those purchasing on behalf of such students. Demonstration of eligibility is required and unverified orders may be canceled or rejected. No more than two bundles per household. Dell will only accept returns of the entire bundle. Abuse of student credentials will be investigated and may result in termination of the offer.

NEW Dell™ Inspiron™ 14R
Enjoy a laptop that's light, mobile and ideal for your on-the-go lifestyle
\$699.99

- New 2nd gen Intel® Core™ i3 processor
- Genuine Windows® 7 Home Premium
- 4GB Memory*; 500GB* Hard Drive

SWITCH by design studio
Black SWITCH lid comes standard. Optional SWITCH by Design Studio lids starting at **\$34.99**

Your student benefits:

- Best price guarantee* on Dell consumer PCs
- Up to 30% or more off select Dell consumer PCs
- 10% off Dell mobility products
- Free 3-5 day shipping on systems \$699 and above before taxes and fees*

Shop now ▶ Dell.com/DellU or (866) 328-1898

Student exclusive. Use your member ID to order: US29290053

Your PC, simplified. 

Immaculata and the Arts

“Come experience the gift of Music, come explore your musical creativity, and come share your passion and musical gift with fellow Immaculata Students.”

The Department of Music cordially invites Immaculata University students to develop their musicianship and artistic performance skills by joining any of our large or small choral and/or instrumental ensembles. The Department of Music, in conjunction with Student Activities, offers non-music majors and music majors alike the opportunity to participate in a variety of large and small ensembles. Ensembles organized by Student Activities include Chorale, Gospel Choir, Immaculata Symphony, Immaculata Wind Symphony. In all, including both large and small ensembles, there are sixteen ensembles that give both the student-musician and student-enthusiast the opportunity to know both the mutuality and individuality of the musical experience. Large ensembles include: the Immaculata Chorale, Immaculata Symphony and the Immaculata Wind Symphony (Concert Band). ■

Academic Success Center

The Academic Success Center is available to serve students with a variety of academic and organizational needs by offering academic success coaching, academic accommodations and peer tutoring. Students are able to meet individually with the Learning Strategies Specialists to work on improving time management, study skills, note-taking strategies, test-taking strategies, organization, and long-term planning.

Academic accommodations are available to students with psychiatric, learning or medical conditions in accordance with the Americans with Disabilities Act because we recognize that some students may need additional support within their learning environments. The Academic Success Center is also home to the Peer Tutoring Program where students can receive additional instruction in academic courses in both individual and group formats. If you have any questions or think your son/daughter may benefit from any of our services, do not hesitate to contact Katie Peters, Manager of Academic Success Services, at (610) 647-4400 ext. 3876 or kpeters@immaculata.edu. ■

Enjoy a 3 mile ride to the beautiful campus of Immaculata University!



HAMPTON INN - FRAZER

125 Rooms (with connecting rooms for families to stay connected during their stay)

Complimentary Hot Breakfast

Wireless Internet Access Throughout the Hotel.

Business Center

Convenient Nearby Dining

*When using some GPS the city of Malvern, PA needs to be used instead of Frazer, PA.

635 E. Lancaster Avenue
Frazer, PA 19355

(610) 699-1300
hamptoninn.hilton.com



Department of Athletics

Athletics is an integral part of the liberal arts educational experience at Immaculata University. The athletic programs provide an opportunity for individual growth while instilling discipline, self-sacrifice, teamwork, and the essence of sportsmanship and fair play.

A student-athlete is expected to commit their best effort to academics first and then to their sport, to join other university activities, to fulfill responsibilities such as work/study, and in general, to enjoy a full collegiate experience. The specific aim of Immaculata athletics is to provide a quality competitive experience in an atmosphere of commitment, success and teamwork.

About Immaculata Athletics:

Varsity Teams: 16 (eight men's, eight women's)

Men's Teams: Baseball, Basketball, Cross Country, Golf, Lacrosse, Soccer, Tennis, Track and Field

Women's Teams: Basketball, Cross Country, Field Hockey, Lacrosse, Soccer, Softball, Tennis, Track and Field, Volleyball

Conference: Colonial States Athletic Conference (CSAC)

Affiliation: NCAA Division III

Nickname: Mighty Macs

Athletic Dept. Phone: (610)

647-4400 ext. 3881

Athletic Web Site: www.gomightymacs.com ■

www.gomightymacs.com

Intramurals

Immaculata University's Intramural Program provides its student body with opportunities for not only physical fitness, but also positive social interaction with their peers.

Through the Intramural program many different educational opportunities such as teamwork, leadership, problem solving and competition are visible.

From month-long leagues to night-long tournaments, Immaculata's Intramural Program offers a variety of different sports to the whole Immaculata University community.

For more information contact: Michelle Stine, Assistant Director of Intramurals & Academic Support Services, at mstine@immaculata.edu ■





Campus Life

A variety of programs and service create the vibrant campus experience here at Immaculata University.

Students are involved in creating their university experience by becoming affiliated with a club or organization, an athletic team, through campus ministry and a variety of other campus leadership opportunities.

The out-of-class experience is important and students are encouraged to get involved. Here is what Immaculatans are saying about their IU experience:

Bridget Welz

Hometown: Flourtown, Pennsylvania

Major: Sports Management/
Exercise Science

Graduation Year: 2012

Campus Involvement: Women's Basketball, Exercise Science Club, Intramural volleyball and softball, Work Study, Campus Ministry Projects

My experience here at Immaculata University has been an awesome experience. Immaculata University's value-based academic excellence and personal attention is what every student should yearn for in a college. As a member

of the Immaculata Women's Basketball team and being a student-athlete I have grown into a well rounded individual.

The passion and dedication of those at IU has given me a great experience that I wish everyone could experience through their time at college. At Immaculata you not only receive a great education but you become a part of a great family.

The transition from high school to college can be a scary change but I learned that by getting involved is the best way to settle in and to become a part of the IU family. It is important to be yourself. Here at Immaculata there is something for everyone, so don't be afraid to explore possibilities. ■



Immaculata University

Student Organizations

Immaculata students like to be involved.

There are dozens of student clubs and organizations:

- SAIU (Student Government)
- Programming Board
- Cue and Curtain Players (theatre)
- The Immaculatan (Student Newspaper)
- Pilgrimages (Literary Magazine)
- Immaculata Choral
- Active Minds
- African American Cultural Society (AACCS)
- New Student Orientation
- Residence Counsel
- Commuter Counsel
- Mac Mentors
- Mac Democrats
- IU Dance Company
- Gospel Choir
- IU Symphony
- IU Wind Ensemble
- Na Scleipi (Irish Club)
- Paintball Club
- Photography Club
- Campus Ministry
- Mac for Life
- Outsiders Club
- Praise Dance
- Double S
- Conservate Terram
- Exercise Science Club
- Knit or Crochet Your Worries Away
- Winter Guard
- Environmental Club
- Peer Educators
- Student Ambassadors
- Swim Club
- Intramurals

Greek Life

- Omicron Pi Epsilon
- Alpha Xi
- Tau Phi
- Eta Phi Tau
- Phi Lambda Epsilon
- Delta Pi ■



FIRST NIAGARA

200 W Lancaster Avenue, Frazer PA 19355

Unlimited Free ATMs with First Niagara Pinnacle Checking.
425,000 ATMs in the US and all of them are free.

We won't charge you any fees for using an ATM, and if other banks do we'll refund you those fees too.

Call Jerry Dorn at the Frazer Branch, 610-647-4063 for more details.

www.fnfg.com



New Students “Make Their Mark” at NSO

For many Immaculata freshmen, the past several weeks have been their first time away from home. No more parents, no more strict rules or curfews ... simply freedom.

The first few weeks of college are overwhelmingly exciting— new people, large parties, and most importantly, an abundance of new opportunities.

Numerous students think of college as a way to reinvent themselves or do things they’ve never experienced before. However, after the first few weeks have passed, the partying simmers down and it’s time to really focus on what you came to do in college—furthering your education.

Although many freshmen are becoming homesick already, there’s no need to worry. Immaculata focuses on substituting as a home away from home. Thanks to the plentiful amount of activities run by the New Student Orientation (NSO) staff, the awkward transitional stage was made a little bit easier. Activities during NSO II included plenty of ice breaker games and ice cream socials, as well as Convocation and a community service project provided by the First Year Experience (FYE) class.

“My favorite part of NSO was going into Philadelphia. The service project opened my eyes, and made me realize how lucky I am to live where I do and have what I have,” said Kristin Schorn ’13. “I was surprised to find that adjusting to the college life was not as hard as I

expected. I really like having freedom.” Jessica Jones said, “NSO II activities were lots of fun. I liked the ‘texting clues’ scavenger hunt—I thought it was cool that you had to have [your] phone for the clue. I also liked the music lyrics game on back campus. Everyone got involved.”

Janerry Jimenez feels the same: My college experience at Immaculata so far has been great, though. I feel as though I’m getting a genuine education and I really love the beautiful campus. My hardest adjustment thus far has been getting used to the colder temperatures. It’s a drastic change coming from Puerto Rico all the way to Pennsylvania.”

Dan Klordarska comments, “Participating in a sport, work study, and a 16-credit schedule creates a lot of stress... but I can’t complain. I wouldn’t want it any other way. I like to stay active because it makes me a more efficient person. If I wasn’t busy, I would procrastinate.”

Despite the fact that being a freshman has its awkwardly entertaining flaws, it’s a new, fresh opportunity to do something productive with your life. Make the most of your freshman year, and as we’ve been told many times during NSO, it’s time to “make your mark” on Immaculata! ■

Where Is Immaculata?

Immaculata is in Chester County.

Situated in the Seat of Chester County, the town of West Chester is a hub of activity with its restaurants, stores, and community activities.

The historic town of Malvern is two miles from Immaculata introducing charm, sophistication, antique stores, and restaurants to the Immaculata student.

Valley Forge Park: The site for the winter camp during the Revolutionary War, this National Park is 15 minutes from Immaculata, providing numerous activities for students.

With more than 400 stores and restaurants, the King of Prussia Mall is the largest mall on the East Coast.

Directions:

Rte 30 Lower Merion/Villanova: Take Rte 30 W/Lancaster Ave towards Paoli/Exton. Continue on Rte 30 W/Lancaster Ave to Rte 352 S/Sprout Rd. Turn left onto Rte 352 S/Sprout Rd. Follow directions from Rte 352 & 30.

Rte 30 Exton/Downington: Take Rte 30 E/Lancaster Ave towards Philadelphia. Continue on Rte 30 E past Rte 202 to Rte 352 S/Sprout Rd. Turn right onto Rte 352 South/Sprout Rd. Follow directions from Rte 352 & Rte 30.

From West Chester Pike (Rte 3): Travel east or west to Rte 352; follow Rte 352 N. Turn left at light onto King Road. University is one mile on right.

From King of Prussia: Take Rte 202 S to Rte 29 Malvern exit (follow Immaculata University sign - 2nd exit); bear right to Rte 29; turn right on Rte 29; at 3rd light, turn right onto Rte 30 W. Go to Rte 352 S, turn left. Follow directions from Rte 352 and Rte 30.

From Philadelphia: take Schuylkill Expressway (I-76) West to Rte 202; take Rte 202 S towards West Chester.

Follow the King of Prussia directions.

Turnpike (I-276) WEST: Travel to the Downingtown Exit 312; take Rte 100 S to Rte 30/Lancaster Ave.; turn left on Rte 30 E/Lancaster Ave. to Rte 352/Sprout Rd; turn right on Rte 352 S/Sprout Rd; follow directions from Rte 352 & Rte 30.

Turnpike (I-276) EAST: Follow the PA Turnpike to the Valley Forge Exit (326). Once past the tolls, follow Rte 202 S toward West Chester. Follow the King of Prussia directions.

From Wilmington & I-95: Travel north on Rte 202 to the Rte 30/Frazer Exit; turn right on Rte 30 E/Lancaster Ave and continue to Rte 352/Sprout Rd; turn right on Rte 352/Sprout Rd; follow directions from Rte 352 & Rte 30.

From Rte 352 & Rte 30: Travel South on Rte 352. Proceed under the railroad bridge to the first light which is King Road. Turn right onto King Road. Immaculata is one mile on the right.

BY TRAIN, BUS, TAXI:

From Center City Philadelphia: take SEPTA R5 train west to Paoli. SEPTA bus 133 runs from King of Prussia through Paoli to the University. For taxi service from Paoli, call (610) 644-2564.

BY AIR:

Immaculata is approximately a 50-minute drive from Philadelphia International Airport, where limousine service is available to the Paoli/Malvern area. The SEPTA R1 train from the airport connects with the R5 train (Paoli Local).

Immaculata is 90 miles from the Pocono Mountains ski resorts and 100 miles from the New Jersey and Delaware beaches.

Immaculata is 20 miles west of Philadelphia, home of the Phillies, Eagles, Flyers and 76ers.

Immaculata is 140 miles from New York City and 130 miles from Washington, D.C. ■

Best Brain Food Around! The healthiest, tastiest care packages available.

Healthy, organic college care packages for your student - **a healthy student performs better!** Perfect for holidays, exam week, birthdays or just to say I Love You!

\$5 off when you use code CollegeCare



303-499-6742 | www.AmericasBestOrganics.com/CollegeCare



Send a Party In A Box It's the box that talks!

The only gift box that comes with a personally recorded message!

It's just like being there to celebrate, even if you can't! The Party Box includes a personalized recorded audio message and printed greeting card, celebration music, choice of cake, necessary utensils, noisemakers, birthday hat and battery operated candle. It's a great way to celebrate any special occasion!

Go Ahead. Be A Gigglemaker!
Visit itmakesmegiggle.com
or call (866) 468-5441

